

2025

**FASTER &
STRONGER**

ANNUAL REPORT 2025



TABLE OF CONTENTS

Mission, Vision	04
Core Values	05
Message from the Chairman	06
Message from the President	07
Financial Highlights	08
Corporate History	09
Board Profile	10
Management Committee	12
Operational Highlights	13
Risk Management	14
Company Policies	15
Industry Membership and Associations	16
Compliance Commitment	16
Role of the Board of Directors	17
Board Succession and Nomination	18
Board Operations and Processes	19
Board Committees	20
Board Meeting Attendance	21
Directors' Training	22
Rights of the Stockholders	23
List of Stockholders	23
Dividend Policy	24
Audit Fees	24
Products and Services	25
FPG Insurance Branches	27
Corporate Social Responsibility	28
FPG Insurance Sustainability	29
2025 Audited Financial Statement	32



Mission

Our commitment is to bring insurance protection and peace of mind to our clients.



Vision

Be the trusted insurer of choice focused on bringing a positive and digitally-enabled client experience.



Core Values



Integrity



Respect



Accountability



Courage



Results-Driven

MESSAGE FROM THE CHAIRMAN



DAVID ZUELLIG
CHAIRMAN OF THE BOARD

Strong institutions are built over time, through clarity of purpose, sound governance, and the ability to adapt while remaining true to their core.

In 2025, FPG Insurance demonstrated these qualities with distinction. The recognition the Company received from respected regional and global award-giving bodies reflects not only operational competence, but also a deep commitment to service excellence, innovation, and long-term value creation. These achievements affirm that FPG Insurance continues to operate with credibility, discipline, and strategic intent.

Equally important is the Company's forward-looking direction. The planned merger with Mercantile Insurance marks a significant milestone in FPG Insurance's evolution, one that signals readiness to scale, strengthen resilience, and unlock new opportunities for sustainable growth. This strategic move is grounded in thoughtful planning and a shared vision to build a stronger organization for the future.

As Chairman, I take pride in the leadership, employees, and partners who continue to uphold high standards of governance, accountability, and performance. Their collective efforts ensure that FPG Insurance remains well-positioned amid industry shifts and economic uncertainties.

Looking ahead, I am confident that FPG Insurance will continue to grow with purpose—guided by experience, strengthened by innovation, and anchored in values that prioritize trust and long-term impact. The foundation is strong, the direction is clear, and the organization is prepared to move forward with confidence.

MESSAGE FROM THE PRESIDENT



GIGI PIO DE RODA
PRESIDENT AND CEO

At FPG Insurance, our progress has never been by chance. It is driven by deliberate decisions, disciplined execution, and a steadfast commitment to continuously raising the standard for our customers, partners, and our people.

2025 was a year that affirmed the direction we have taken as an organization. Our focus on strengthening operations, advancing innovation, and elevating the customer experience has translated into meaningful recognition across the industry. Being honored with Claims Initiative of the Year at the Insurance Asia Awards, Most Innovative Solutions Provider – Philippines at the Global Brand Awards, and Insurance Company of the Year at the Asset Triple A Insurance Awards reflects the collective effort of our teams and the trust placed in us by our stakeholders.

These milestones reinforce our belief that innovation must deliver real value. We continue to refine how we serve, making processes more intuitive, responses faster, and engagement more transparent, while ensuring that our solutions remain practical, relevant, and dependable. This mindset drives our pursuit of operational excellence and positions us to grow with confidence in an increasingly dynamic market.

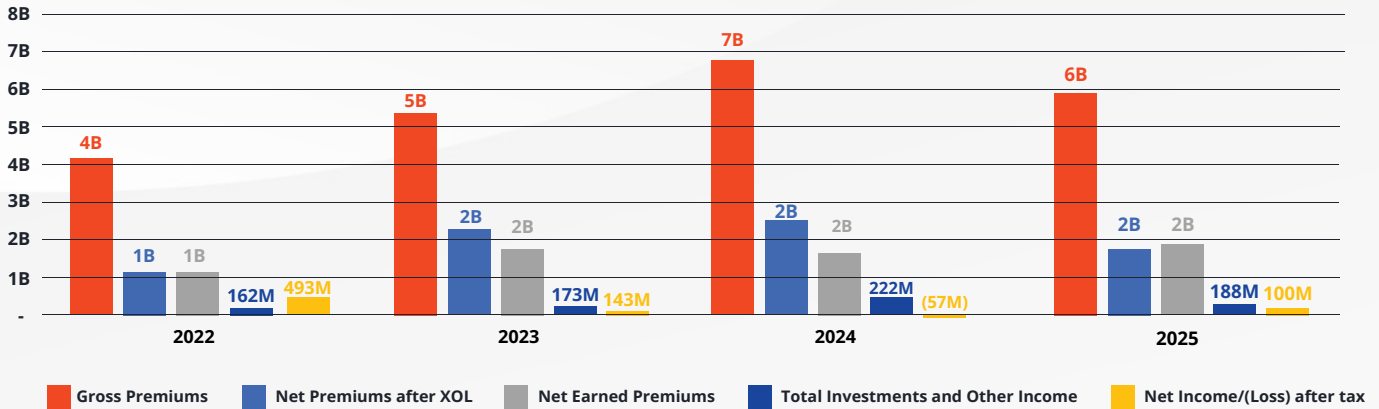
Looking ahead, the announced merger with Mercantile Insurance represents an important step forward in our journey. It opens opportunities to expand our capabilities, strengthen our market presence, and build a more resilient organization, one that is better equipped to meet evolving needs and scale sustainably in the years to come.

As we move forward, our direction remains clear and purposeful. We will continue to invest in our people, sharpen our execution, and pursue disciplined growth, while deepening the partnerships that are fundamental to our success. Strengthening collaboration with our brokers, agents, corporate clients, and stakeholders will remain central to how we grow and create shared value.

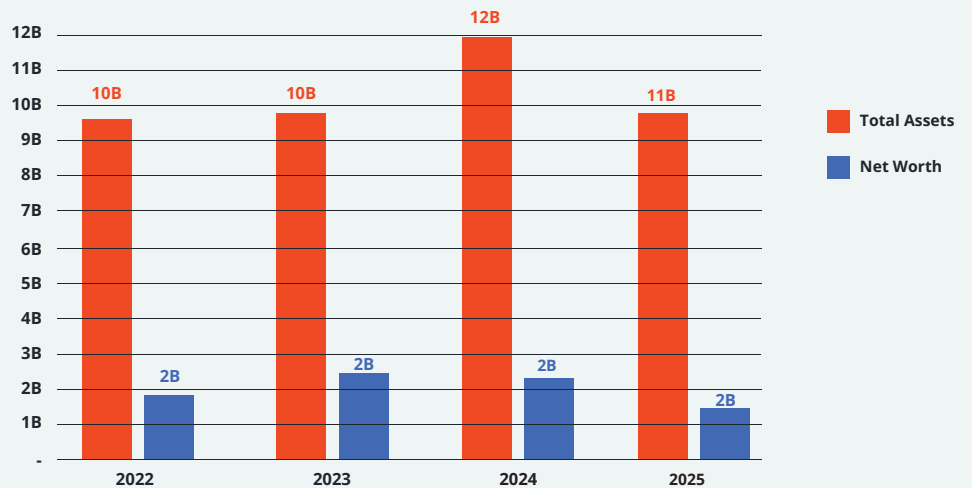
With the momentum we have built together, FPG Insurance moves ahead stronger, more united, and better prepared to seize the opportunities before us and shape a sustainable future alongside our partners.

FINANCIAL HIGHLIGHTS

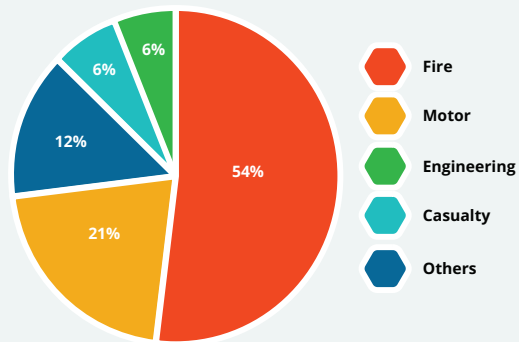
PROFIT AND LOSS



TOTAL ASSETS AND NET WORTH



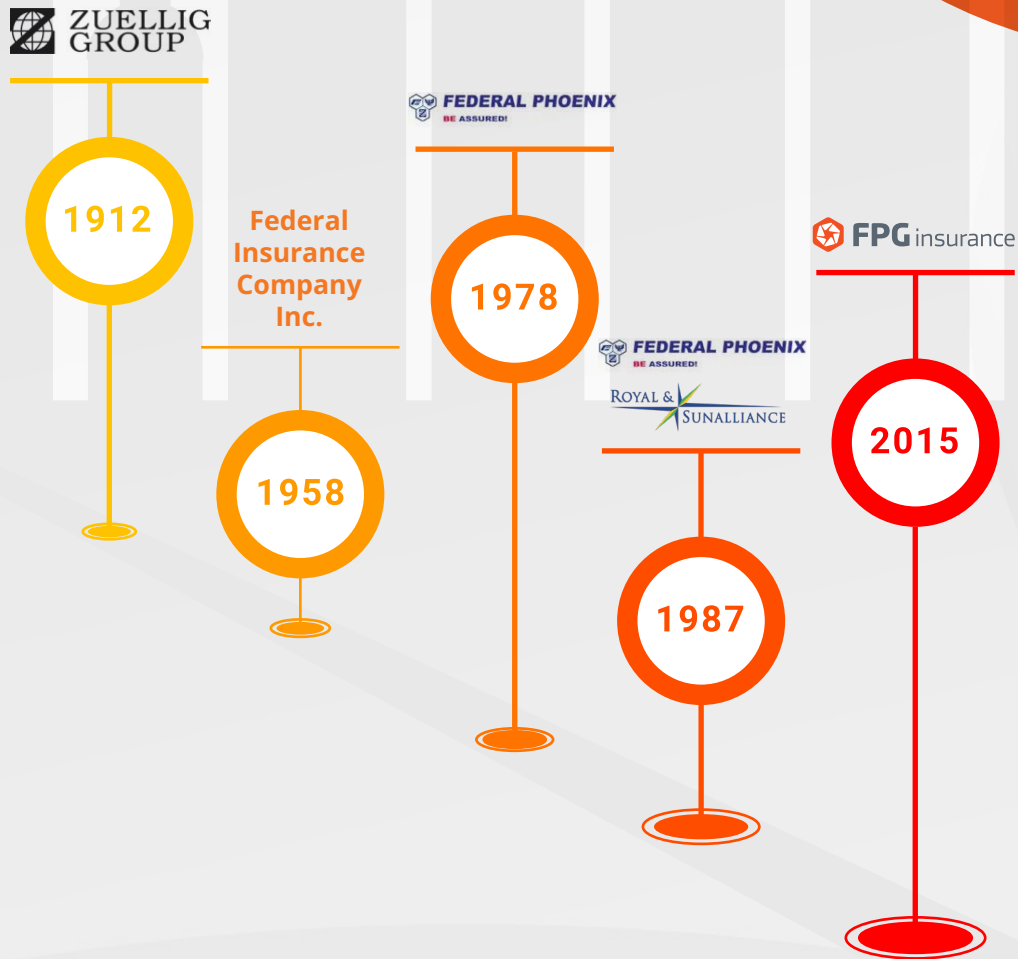
2025 GPW PER LINE OF BUSINESS



As FPG Insurance concludes 2025, the Company builds on a track record of stable performance and disciplined growth within the Philippine non-life insurance industry. Recent years have reinforced FPG Insurance's strong market presence, with 2025 reflecting sustained competitiveness and a Top 6 ranking in Gross Premiums Written (GPW)*. This continued performance underscores the Company's resilience and positions it well to pursue further growth and innovation.

*Gross Premiums Written (GPW) as of 31 December 2025, based on Audited Financial Statement.

CORPORATE HISTORY



In 1912, the Zuellig Group was established and has since become synonymous with reliability and effective management practices.

By 1958, the Zuellig Group established Federal Insurance, and was entrusted with the mandate to provide guarantee to the public through underwriting non-life insurance.

Twenty years later, Phoenix Insurance acquired minority shares in Federal Insurance, therefore changing the name to Federal Phoenix Assurance Co., Inc. (FPAC) in 1978.

And in 1987, the ownership composition of the Company changed to 60% ownership by the Zuellig Group and the remaining 40% owned by Royal Insurance and Sun Alliance of the United Kingdom. As the business performed well, the Zuellig Group gained sole ownership of FPAC by entirely buying out Royal Insurance and Sun Alliance of the United Kingdom.

Federal Phoenix Assurance Co., Inc. has become a trusted name in the general insurance space. In 2015, the Company was renamed to FPG Insurance Co., Inc., a modern brand we know today as one of the leading general insurance companies in the Philippines.

BOARD PROFILE

The Board of Directors of FPG Insurance Co., Inc. is composed of the following individuals who possess the knowledge, experience, and expertise that are relevant to the Company's business:



David Zuellig – is the Chairman of the Board of the Company. He began his career in insurance in 1989 at Accette Insurance Broking, as Chairman until 2011. Currently, he holds various positions on the boards of several industry-leading businesses in the Asia-Pacific region in the following sectors: insurance, healthcare distribution solutions, and pharmacy services.

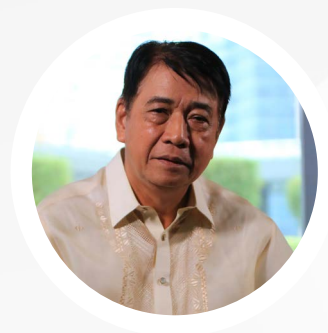


Gigi Pio de Roda – is the President, CEO, and Executive Director of the Company. She has over 30 years of proven expertise in financial services, having previously served HSBC Philippines in various executive positions. She is also the former Chief Operations Officer of AIA Philippines. She has a degree in Management of Financial Institutions from De La Salle University and is a Fellow of the Institute of Corporate Directors (ICD PH). She earned her CXAC (Customer Experience Accreditation Certification) from the CX Academy in 2024.



Atty. Ricardo J. Romulo – is currently a Non-Executive Director of the Company. He is a Senior Partner at Romulo Mabanta Buenaventura Sayoc, & delos Angeles Law Office with Corporate Law as a practice area. He was formerly the Chairman of the Board of the Company, holding the said office from 1993 to 2019. Atty. Romulo graduated cum laude from Georgetown University with a Bachelor of Science degree in 1955, and he received his Doctor of Laws degree at Harvard Law School in 1958. He was admitted to the Philippine Bar in 1960.

Kasigod V. Jamias – is a Non-Executive Director of the Company. He has vast experience in corporate governance and holds various positions as a Board Director in the health care & insurance industries. He has a degree in Business Administration from the University of the Philippines and a Master of Business Management degree from the Asian Institute of Management.



Atty. Avelino M. Sebastian Jr. – is an Independent Director of FPG Insurance Co., Inc. until June 2025.



Name	Nationality	Age	Date/Month of First Appointment	Directorship in Listed Companies	Academic Qualification/ Career/Background
David Zuellig	Filipino	68	May 1995	None	Business Administration
Gigi Pio de Roda	Filipino	60	January 2020	None	Management of Financial Institutions
Ricardo J. Romulo	Filipino	93	March 1981	None	Doctor of Laws
Kasigod V. Jamias	Filipino	78	June 2004	None	Business Administration
Avelino M. Sebastian Jr.*	Filipino	72	March 2019	None	Economics, International Banking Law

* Resigned as Board of Director effective June 2025

MANAGEMENT COMMITTEE



From Left to Right:

Wilhelm Rommel An Pareja (Head of Corporate Business Group), Michael Rebong (Chief Technology Officer), Sharon Marjorie Navarro (Chief Underwriting Officer), Agnes Christina Sauler (Chief Sales Officer), Raul de Luna (Chief Finance Officer), Vinelle Trinidad Haber (Head of Alternative Channels Sales Group), Gigi Pio de Roda (President & Chief Executive Officer), Marlon Ladesma (Head of Internal Audit), Atty. Norguel Yazer Eleazar * (Head of Legal, Risk and Compliance), Renee Valdez (Head of Human Resources), Atty. Lawrence Mari Santella (Head of Legal, Risk and Compliance), Deo Patrick Ballares (Head of Agency Sales & Development Group), Atty. Noel Salvador (Head of Claims Group) - *not in the picture.*

* Transferred to special projects / merger integration effective September 2025

OPERATIONAL HIGHLIGHTS



A YEAR OF RECOGNITION, MOMENTUM, AND STRATEGIC TRANSFORMATION

2025 marked a defining chapter in FPG Insurance's growth story, one characterized not by numbers alone, but by industry recognition, operational excellence, and a clear strategic direction for the future. Throughout the year, the Company continued to strengthen its foundations, sharpen its capabilities, and elevate its role as a forward-thinking non-life insurer in the Philippines.

A key highlight of the year was the strong validation FPG Insurance received from respected regional and global institutions. In recognition of its customer-centric claims innovations, the Company was awarded Claims Initiative of the Year at the Insurance Asia Awards, affirming its continued investment in faster, more transparent, and more responsive claims servicing. This achievement reflects FPG Insurance's long-term focus on improving the claims experience as a critical touchpoint in the customer journey.

Further reinforcing its innovation agenda, FPG Insurance was named Most Innovative Solutions Provider – Philippines at the Global Brand Awards. This recognition underscored the Company's ability to translate innovation into practical, value-driven solutions, enhancing accessibility, efficiency, and ease of doing business for customers, partners, and intermediaries alike.

Crowning these achievements, FPG Insurance was honored as Insurance Company of the Year at the Asset Triple A Insurance Awards, a testament to the Company's overall operational strength, strategic clarity, and consistent execution across the organization. Together, these accolades reflect industry-wide confidence in FPG Insurance's direction and capabilities.

2025 stood out as a pivotal period of transformation. One of the most significant developments was the announcement of FPG Insurance's planned merger with Mercantile Insurance, a strategic milestone that signals a new phase of scale, resilience, and opportunity. This integration is expected to strengthen operational synergies, broaden market reach, and enhance the combined organization's ability to serve a wider customer base with greater depth and expertise.

As FPG Insurance moves forward, our focus remains firmly anchored on building a stronger, more agile, and future-ready organization, one that not only responds to evolving customer needs but also actively empowers the partners and intermediaries who are at the heart of our distribution network. We are committed to cultivating our trust-based partnerships founded on transparency, collaboration, and shared success. By reinforcing our operational platform, enhancing service responsiveness, and expanding a portfolio of innovative and competitive solutions, we aim to provide our brokers, agents, and corporate partners with the stability, support, and strategic alignment they need to grow confidently alongside us.

Guided by a clear vision for sustainable growth and strengthened by deeper collaboration, the Company enters the coming years with renewed confidence, strengthened alliances, and a collective momentum to build lasting value together. 2025 was not just a year of recognition, it was a year that set the stage for what comes next.

RISK MANAGEMENT



The Board recognizes the importance of identifying and managing key risks that could impact the company. Ensuring a proactive approach to risk management remains a top priority for the Board, the Management, and all employees of the Company. In 2023, the Company implemented its Own Risk and Solvency Assessment (ORSA) Policy to further strengthen its risk oversight framework. On December 2025, FPG Insurance has successfully submitted its Annual ORSA Report to the Insurance Commission.

Having the ultimate responsibility of risk governance, the Board maintains a well-structured and effective risk management system.

Additionally, FPG Insurance's Internal Audit function, under the oversight of the Risk and Audit Committee, plays a crucial role in maintaining the integrity and efficiency of internal controls. To reinforce this further, External Auditors are engaged to assess financial regulatory risks and ensuring compliance.

With the combined efforts of the Risk and Audit Committee, the Internal Audit function, and External Auditors, the Board is confident that the Company's risk management framework remains strong, effective, and well-monitored.

COMPANY POLICIES

WHISTLE BLOWING POLICY

The Company has a Whistleblowing Policy that ensures all employees act with integrity in all situations by reporting illegal or non-compliant conduct.

- Employees shall report any practices or actions believed to be inappropriate under the Code of Conduct or illegal to their line managers, or the Head of HR and Admin, or Head of Legal, Risk and Compliance
- If appropriate, in view of the nature of the reported matter, reports of violations may be made directly to higher levels including the Chief Executive Officer
- Complaints may be made in a confidential manner - and shall be investigated accordingly

The Company prohibits retaliation against any employee for reports made in good faith, while it equally protects the rights of the incriminated person.

POLICY ON GIFT AND GRATUITY

Guided by a firm, unequivocal commitment to integrity as one of its core values, the Company prohibits its employees from accepting and/or offering inappropriate gifts and gratuities that may impair or appear to impair the recipient's objectivity and may affect their ability to properly perform their job and responsibilities. If an employee faces a situation that may involve receiving and/or offering inappropriate gifts and gratuities, the employee is required to disclose such information and seek appropriate guidance.



SUPPLIER SELECTION POLICY

As the Company is committed to strict adherence to laws and regulations, unyielding ethical standards, and providing excellent services to its customers, the Company expects the same from our suppliers. The Company believes that having mutually observed values and maintaining professional contacts with its suppliers result in quality products/services and success for both sides.



It is important that the supplier selection process must be objective and transparent. Hence, the selection is subject to the following criteria:

- quality of the product/service
- professional and technical competence
- competitive pricing
- established delivery timeframe
- customer service

INDUSTRY MEMBERSHIP AND ASSOCIATIONS



FPG Insurance is a member of the Philippine Insurers and Reinsurers Association Inc. (PIRA), with the President and CEO, Gigi Pio de Roda, serving as the Chairman of the Board of Trustees for 2025.

FPG Insurance is also a member of the Management Association of the Philippines (MAP), the Makati Business Club (MBC), and the Insurance Institute for Asia and the Pacific, Inc. (IIAP).

FPG Insurance is regulated by the Insurance Commission of the Philippines.

COMPLIANCE COMMITMENT

The Company is committed to the highest standards of Corporate Governance as articulated in the Insurance Commission's Revised Code on Corporate Governance, the Company's Articles of Incorporation, By-Laws, Code of Conduct, and the Revised Manual on Corporate Governance. In furtherance of this commitment, the Company endeavors to be a corporate steward promoting ethical corporate culture guided by the Company's core values: Integrity, Respect, Accountability, Courage, and Results-Driven.

The Board of Directors, officers, and employees shall undertake every effort to create awareness of the Corporate Governance principles and practices within the organization to ensure proper internalization by every stakeholder of the Company.



ROLE OF THE BOARD OF DIRECTORS

The Board of Directors is the supreme governing body elected by the stockholders to exercise the corporate powers of the Company and to conduct its business. The Board is likewise responsible for overseeing the development and approval of the Company's business objectives and strategy, and monitoring their implementation, in order to sustain the Company's competitiveness and strength.

Under the Revised Manual of Corporate Governance, the Board of Directors has the primary responsibility of fostering the success of the long-term objectives and success of the Company and ensuring its competitiveness. Furthermore, the Board of Directors is responsible for approving and overseeing the effective implementation of the corporate objectives, compliance policies and procedures, risk management, and including the performance of the Senior Management. The Board of Directors also formulates measures for success and lays the foundation of the Company's activities including long-term and short-term corporate plans.

In line with its role, the Board reviews the corporate strategic plans, the long-term business plans, and strategic initiatives on an annual basis taking into account, among other things, the opportunities and risks of business.



BOARD SUCCESSION AND NOMINATION



To be nominated as a Board member, it is necessary that the individual should have the required experience, skill, time, and commitment that can be devoted to the Company.

The following are the qualifications necessary for candidates being considered for nomination as a Board member:

- a. a reputation for integrity and ethical behavior;
- b. a demonstrated ability to exercise judgment and communicate effectively;
- c. has strong financial knowledge/literacy;
- d. prominence in the individual's area of expertise; and
- e. sufficient time to dedicate to board and committee work

The Company's stockholders elect the Board of Directors from the recommendation of the Corporate Governance Committee. The Corporate Governance Committee takes into account the qualifications set forth in the Revised Code of Corporate Governance. The Board of Directors holds office for one (1) year until their successors are elected and qualified in accordance with the By-Laws of FPG Insurance.

At the annual stockholders' meeting held on June 11, 2025, the Board of Directors was elected to serve for the year 2025 to 2026. Upon nominations duly made and seconded, the following directors were unanimously elected to serve as such until the successors shall have been duly elected and qualified:

BOARD OPERATIONS AND PROCESS

Board meetings may be held at such time and place, and upon notice of the Board of Directors as may be decided in a meeting duly called for said purpose. Generally, the Board meetings are held on a quarterly basis. The schedule of meetings for 2026 will be presented during the next regular meeting of the Board scheduled within the first quarter of the year.

Special meetings of the Board may be called by the President or on the written request of at least two (2) directors, and upon at least one day's notice of the time and place of the holding of the meeting.

The Board of Directors receives the notice of the meeting at least two (2) weeks before the meeting and the materials at least five (5) business days prior to the meeting. The materials pack includes company operation information, minutes of the previous Board meetings, and all other documents needed for Board discussion.

Minutes of meetings of the Board and all Committees are kept by the Corporate Secretary. The said minutes are open for inspection by the Board and stockholders upon request



In December 2025, the Corporate Governance Compliance Officer, through the Corporate Secretary, distributed a Board Assessment Questionnaire covering Board and Committee effectiveness, individual director self-assessment, Board responsibilities, Board operations, and management performance. The results of the assessment are expected to be consolidated and reported to the Board in March 2026.

BOARD COMMITTEES



AUDIT AND RISK COMMITTEE

The Audit and Risk Committee shall assist the Board of Directors by providing recommendations and oversight, policy setting, information gathering, and communication regarding the relevant risks, risk management system, and infrastructure of the Company. It also has an oversight role with respect to financial information and audit functions by providing an independent review of the effectiveness of the financial reporting process and internal control system. The Committee will also perform the oversight of the related party transactions.

Audit and Risk Committee Members

David Zuellig	Member
Kasigod V. Jamias	Member

CORPORATE GOVERNANCE COMMITTEE

The Corporate Governance Committee shall assist the Board in ensuring compliance with and proper observance of corporate governance principles and practices. The Committee will also serve as the Remuneration and Nomination Committee of the Company.

Corporate Governance Committee Members

David Zuellig	Member
Gigi Pio de Roda	Member
Kasigod V. Jamias	Member

BOARD MEETING ATTENDANCE



The Board met eleven (11) times in 2025. Details of the Board's attendance are as follows:

Director	Feb 10	Feb 24	Mar 5	Apr 10	Apr 30	May 16	Jun 11	Sept 10	Sept 19	Oct 8	Dec 5	% Attended
David Zuellig	✓	✓	✓	✓	✓	✓	✓	✓	✓	✓	✓	100%
Gigi Pio de Roda	✓	✓	✓	✓	✓	✓	✓	✓	✓	✓	✓	100%
Avelino M. Sebastian Jr.*	✓	✓	✓	✓	✓	✓	—	—	—	—	—	54%
Ricardo J. Romulo	✓	✓	✓	✓	✓	✓	✓	✓	✓	✓	✗	90%
Kasigod V. Jamias	✓	✓	✓	✓	✓	✓	✓	✓	✓	✓	✓	100%

* Resigned as Board of Director effective June 2025

DIRECTORS' TRAINING

The members of the Board are required to attend, at least once a year, a program on corporate governance conducted by accredited training providers.

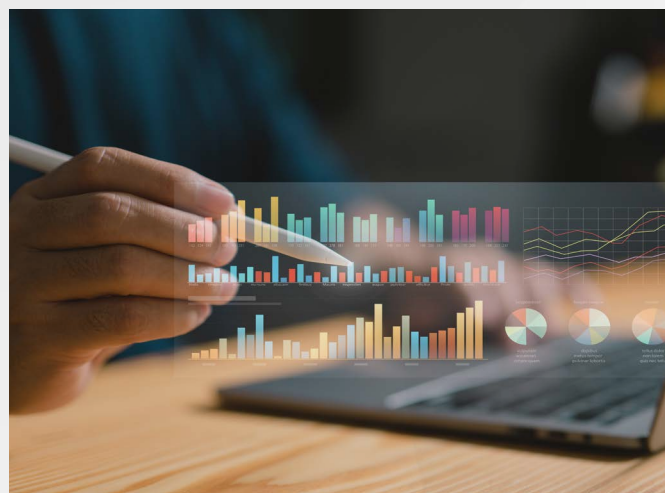
The following are the trainings attended by the Board in 2025:

Director	Training Attended	Date	Institution/Provider
Gigi Pio de Roda	Masterclass The First Series: Session 2 "Risk Governance & the Corporate Board: 3 Key Questions for Addressing What You Don't Plan For"	August 29, 2025	Institute of Corporate Directors (ICD)
	Masterclass Series the Fifth Series: Session 5 "Fraud Risk Assessment: Important Element of Good Governance"	November 28, 2025	Institute of Corporate Directors (ICD)
Atty. Ana Liza A. Peralta	Masterclass: The Fifth Series Session 1	July 25, 2025	Institute of Corporate Directors (ICD)
Atty. Ricardo J. Romulo	Masterclass: The Fifth Series Session 1	July 25, 2025	Institute of Corporate Directors (ICD)
	Masterclass Series the Fifth Series: Session 5 "Fraud Risk Assessment: Important Element of Good Governance"	November 28, 2025	Institute of Corporate Directors (ICD)

RIGHTS OF THE STOCKHOLDERS

The Board shall respect the following rights of the stockholders in accordance with the Company Code:

- right to vote on all matters that require their consent and approval
- right to inspect corporate books and records
- right to information
- right to dividends
- appraisal right



LIST OF STOCKHOLDERS

As of December 31, 2025

Stockholders	Citizenship	Shares Subscribed				Unpaid Subscribed Shares		% of Shares Held
		Class A Shares	Class B Shares	Total Shares	Amount Subscribed Shares (PhP)	Number of Unpaid Subscribed Shares	Amount of Unpaid Subscribed Shares (PhP)	
Golden Eight Group Limited	British Virgin Islands	34,800,000	8,699,993	43,499,993	434,999,930.00	6,200,000	62,000,000.00	100%
David Zuellig	Filipino	-	2	2	20.00	0	0	NIL
Kasigod V. Jamias	Filipino	-	2	2	20.00	0	0	NIL
Ricardo J. Romulo	Filipino	-	2	2	20.00	0	0	NIL
Gigi Pio de Roda	Filipino	-	1	1	10.00	0	0	NIL
TOTAL		34,800,000	8,700,000	43,500,000	435,000,000.00	6,200,000	62,000,000.00	100%

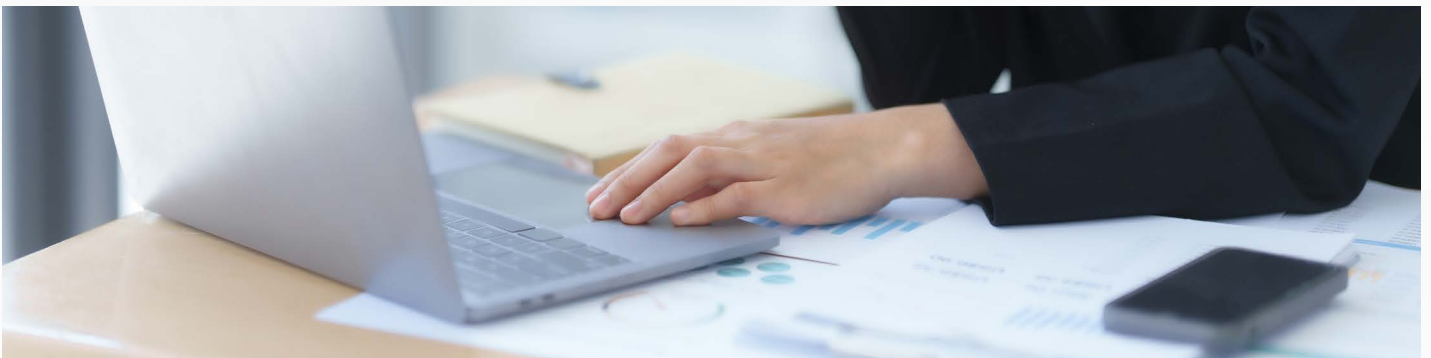
DIVIDEND POLICY



FPG Insurance adheres to the provision of the Insurance Code of the Philippines, particularly Section 201 thereof, as amended, that the Company will declare and distribute any dividend on its stocks when the minimum paid-up and net worth requirement under the code has been met. The Company ensures that, as a matter of policy, dividends are to be paid to its stockholders out of unrestricted retained earnings.

In 2025, FPG Insurance did not have any dividend declaration.

AUDIT FEES



The Board of Directors has confirmed the appointment of I.T. Sabado & Associates as its external auditor for the fiscal year 2025.

The aggregate fees paid to I.T. Sabado & Associates for 2025 is Php 800,000. There were no non-audit engagements paid to I.T. Sabado & Associates for 2025.

PRODUCTS AND SERVICES



FIRE

Commercial All Risk
Fire and Lightning including Allied Perils
Industrial All Risk
MyBusiness Mate
MyCondo Mate
MyHome Mate



MOTOR

Commercial Vehicle
Electric Vehicle
Motorcycle
Private Vehicle
MyAuto Mate
MyCTPL Mate



ENGINEERING

Contractor's All Risk
Electronic Equipment
Erection All Risk
Machinery Breakdown



PERSONAL ACCIDENT

All Occasions Card
ATM Safe
MyAutoPA Mate
MyCyclingClub Mate
MyMotoClub Mate
MyPAP Mate
MyProtection Mate
MySchool Mate
MyTravel Mate Domestic
MyTravel Mate International



CASUALTY

- Comprehensive General Liability
- Comprehensive Personal Liability
- Cyber
- Directors' & Officers' Liability
- Employer's Liability
- Event Liability
- Excess Auto Liability
- Fidelity Guarantee
- Money, Securities & Payroll
- Products Liability
- Professional Liability
- Scheduled Property Floater
- MyCyber Protect Mate



BONDS

- Bidder's Bond
- Bond for Lost Stock
- Bond for Lost Checks
- Downpayment Bond
- General Surety Bond
- Guaranty Bond
- Heirs' Bond
- Payment Bond
- Performance Bond
- Performance Bond (with Salaries & Wages)
- Performance Bond (Non-construction)
- Performance Bond (Combined with Downpayment Bond)
- Real Estate Broker's Bond
- Reconstituted Title Bond



MARINE

- Annual Policy
- Goods In Transit Policy
- Marine Open Policy
- Single Shipment Policy
- Stock Throughput Policy

FPG INSURANCE BRANCHES



MAKATI HEAD OFFICE

6th Floor Zuellig Building, Makati Avenue corner
Paseo de Roxas, Makati City, Philippines
Tel.: (02) 8859-1200 | (02) 7944-1300
Email: phcustomercare@fpgins.com



ALABANG

24th Floor Axis Tower 1 Filinvest Avenue, Northgate
Cyberzone, Alabang, Muntinlupa City, Metro Manila,
Philippines
Mobile: (+63) 917-814-7958
Email: alabang@fpgins.com



ANGELES

No. 303 McArthur Highway, Brgy. Balibago, Angeles
City, Pampanga
Tel.: (045) 458-3866 | (452) 281-0168 | (02) 8859-1228
Email: angeles@fpgins.com



BINONDO

G/F, Pacific Centre Building, 460 Quintin Paredes Street,
Binondo, Manila
Tel.: (02) 8242-4161 | (02) 8523-1698 | (02) 8771-8506
Email: binondo@fpgins.com



CAGAYAN DE ORO

2F Cebu CFI Community Cooperative Building, Tiano Bros.
corner Mabini Street, Cagayan De Oro City
Tel.: (088) 327-9300 | (02) 7944-1379
Email: cagayandeoro@fpgins.com



CEBU

Unit 2 2/F One Mango Avenue, General Maxilom Avenue, Cogon
Ramos, Cebu City
Tel.: (032) 232-4715 | (032) 326-7106 | (02) 8771-8504
Email: cebu@fpgins.com



DAGUPAN

Ground Floor, Unit D & E ARB Corporate Center,
Tapuac District, Dagupan City
Tel.: (075) 522-1763 | (02) 8859-1229
Email: dagupan@fpgins.com



DAVAO

2/F Suite A205-206, Plaza de Luisa Bldg., Ramon Magsaysay
Avenue, Davao City
Tel.: (082) 224-1289 | (082) 222-0013 | (02) 8771-8502
Email: davao@fpgins.com



ILOILO

Regus Festive Walk 3F, Festive Walk Mall, Megaworld
Boulevard, Mandurriao, Iloilo City
Tel.: (033) 325-1251
Email: iloilo@fpgins.com



LAGUNA

G/F Unit 1AB ALX Building, National Highway, Brgy. Halang,
Calamba City, Laguna
Tel.: (049) 520-5372 | (049) 254-1609 | (02) 8771-8501
Email: laguna@fpgins.com



ORTIGAS

Unit 1007, One Corporate Center, Julia Vargas corner
Meralco Avenue, Ortigas Center, Pasig City
Tel.: (02) 8721-2321 | (02) 8771-8503
Email: ortigas@fpgins.com



QUEZON CITY

Unit 602 & 604, The Richwell Center, 102 Timog Avenue,
Quezon City, Metro Manila
Tel.: (02) 7944-1377 | (02) 7944-1358
Email: quezoncity@fpgins.com



CUSTOMER SERVICE HOTLINE

(02) 8859-1200 | (02) 7944-1300
 phcustomercare@fpgins.com
 www.fpgins.com/ph

CORPORATE SOCIAL RESPONSIBILITY

BUILDING SAFER, HEALTHIER, AND MORE RESILIENT COMMUNITIES

In 2025, FPG Insurance reaffirmed its commitment to responsible corporate citizenship by advancing meaningful Corporate Social Responsibility (CSR) initiatives focused on community safety, health, and environmental sustainability. Guided by the spirit of bayanihan, the Company continued to partner with local communities and trusted organizations to create positive, lasting impact beyond insurance protection.

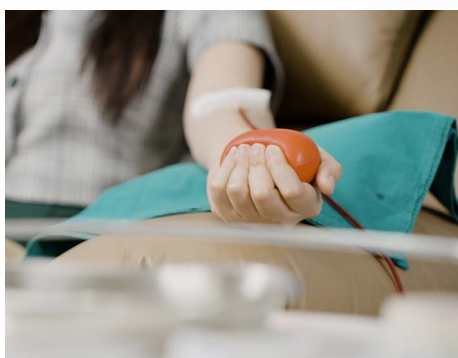
Early in the year, FPG Insurance supported community-based safety initiatives through a series of CSR Bayanihan programs. In February, the Company participated in a Fire Safety and Emergency Preparedness Talk for barangay residents in Pasig City. This initiative aimed to raise awareness on accident prevention and emergency response, equipping community members with practical knowledge to better protect their families and homes. FPG Insurance also provided free meals and branded giveaways, reinforcing engagement and community connection.

In April, the Company extended its road safety advocacy through a Safety Driving Talk for tricycle drivers in a barangay in Dasmariñas, Cavite. Recognizing the vital role of tricycle drivers in daily transportation, the program focused on responsible driving practices and accident prevention. The activity was made possible through the collaboration of FPG Insurance volunteers from the Tropa Committee, Human Resources, and Sales teams, highlighting the Company's culture of employee involvement in social initiatives.

FPG Insurance also contributed to national health efforts by supporting the Zuellig Building Blood Donation Drive conducted by the Philippine Red Cross. Through employee participation, the Company helped support the country's blood supply, demonstrating its commitment to health, compassion, and collective action.

In line with its environmental and disaster recovery advocacies, FPG Insurance made strategic donations in November 2025 to support long-term community resilience. A contribution to the Zoological Society of London (ZSL) helped advance mangrove rehabilitation initiatives in Iloilo, reinforcing the Company's support for environmental protection and climate resilience. In addition, FPG Insurance donated to the Zuellig Family Foundation (ZFF), with funds pooled for disaster recovery efforts aimed at replacing essential health and laboratory equipment in Rural Health Units in Catanduanes.

Through these initiatives, FPG Insurance continued to live out its purpose of protecting lives and supporting communities—not only through insurance solutions, but through active participation in nation-building. The Company remains committed to strengthening partnerships and expanding its CSR programs as part of its long-term vision for sustainable and inclusive growth.



FPG INSURANCE SUSTAINABILITY



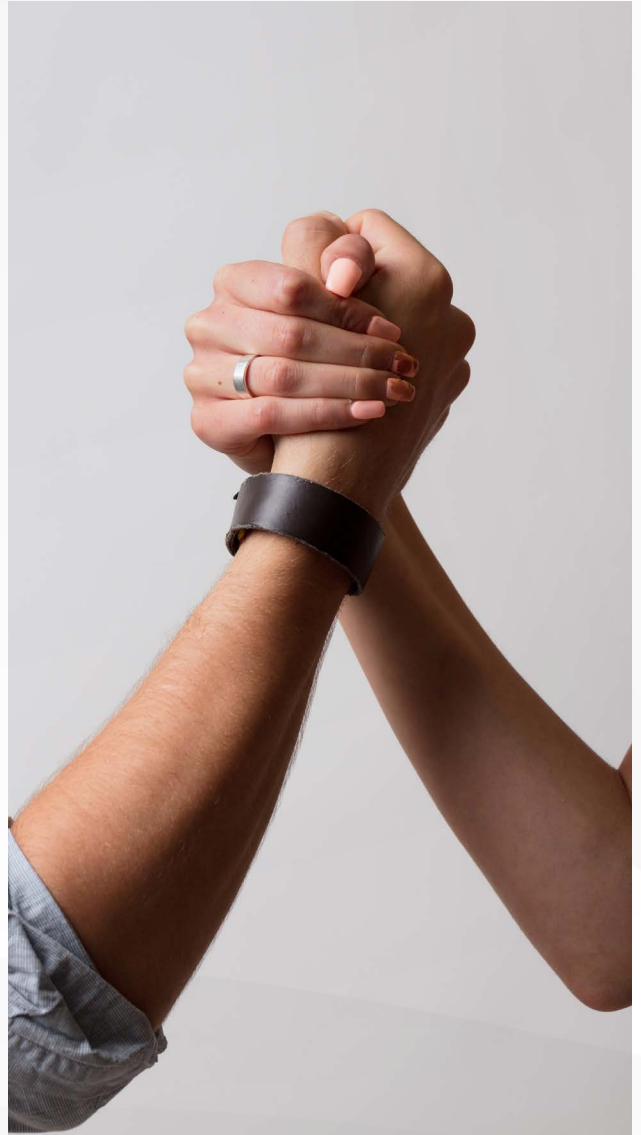
SUSTAINABLE DEVELOPMENT GOALS

In 2025, FPG Insurance aligns its efforts under these 2 United Nations' sustainability goals:



Gender Equality: Achieve gender equality and empower all women and girls

Climate Action: Take urgent action to combat climate change and its impact



Our Approach to Sustainability

Our commitment to sustainability begins within our organization and reaches out to the communities we serve through strong partnerships. By nurturing a culture of sustainability, driven by our dedicated employees and collaborative efforts with local groups, we aim to create meaningful and lasting contributions that go far beyond insurance, fostering resilience and positive change.

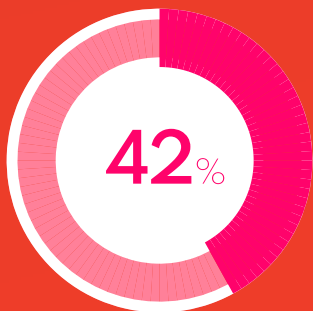
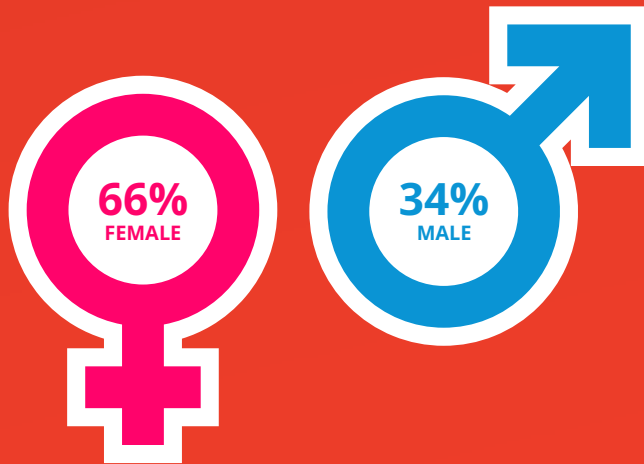
5 GENDER
EQUALITY



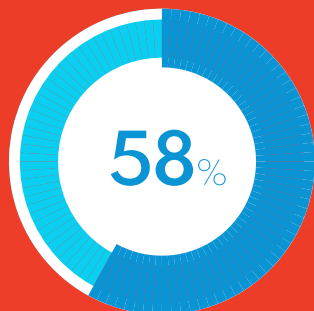
GENDER EQUALITY

At FPG Insurance, diversity thrives, and every individual's contribution is valued. Gender equality isn't just a principle for us—it's deeply embedded in the fabric of our culture.

Workforce composition



FEMALE



MALE

Leaders in executive roles



CLIMATE ACTION

At FPG Insurance, we're on a mission to be sustainable and lead the way in environmental conservation through our efforts to reduce energy consumption and paper waste.



FPG Insurance Head Office is located at Zuellig Building, a LEED-Certified commercial building at the heart of Makati Central Business District.



The building is equipped with a double glazed low e-curtain wall, daylight dimming, motion sensors, and high-efficiency building management, and air conditioning system which is capable of reducing energy consumption.



It also has an efficient centralized air conditioning system and CO² sensors that regulate supply and flow of fresh air.



The Zuellig Building is capable of harvesting rainwater and has low-flow and water-saving fixtures to achieve water efficiency.

2025 AUDITED FINANCIAL STATEMENT

File Upload



All files successfully uploaded

Transaction Code:

AFS-0-9DK89H5B0ADEA98D9P3RPQ32V0MTWMTSMZ

Submission Date/Time:

Apr 24, 2026 01:12 PM

Successfully submitted to BIR.

**STATEMENT OF MANAGEMENT'S RESPONSIBILITY
FOR FINANCIAL STATEMENTS**

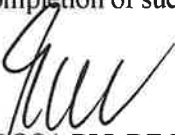
The management of **FPG Insurance Co., Inc.** (the Company) is responsible for the preparation and fair presentation of the Company's financial statements including the schedules attached therein, for the years ended December 31, 2025 and December 31, 2024, in accordance with the prescribed financial reporting framework indicated therein, and for such internal controls as management determines is necessary to enable the preparation of financial statements that are free from material misstatement, whether due to fraud or error.

In preparing the financial statements, management is responsible for assessing the Company's ability to continue as going concern, disclosing, as applicable matters related to going concern and using the going concern basis of accounting unless management either intends to liquidate the Company or to cease operations, or has no realistic alternative but to do so.

The Board of Directors is responsible for overseeing the Company's financial reporting process.

The Board of Directors reviews and approves the financial statements including the schedules attached therein, and submits the same to the stockholders or members.

IT Sabado and Associates, the independent auditor appointed by the stockholders, has audited the financial statements of the Company in accordance with Philippine Standards on Auditing, and in its report to the stockholders or members, has expressed its opinion on the fairness of presentation upon completion of such audit.



GENEROSA PIO DE RODA
President and CEO



RAUL DE LUNA
Chief Financial Officer

Signed this 13th day of April 2026

FPG INSURANCE CO., INC.
6th Floor, Zuellig Building, Makati Avenue corner Paseo de Roxas, Makati City

FINANCIAL STATEMENTS

December 31, 2025

PHILIPPINE CURRENCY

I.T. SABADO & ASSOCIATES
Certified Public Accountants



I.T. SABADO & ASSOCIATES

Certified Public Accountants

No. 8 St. John St., New Era, Quezon City

Tel: (632) 8290 8192

INDEPENDENT AUDITORS' REPORT

The Board of Directors and Shareholders
FPG Insurance Co., Inc.
6th Floor, Zuellig Building
Makati Avenue corner Paseo de Roxas
Makati City

Report on the Audit of the Financial Statements

Opinion

We have audited the financial statements of FPG Insurance Co., Inc. which comprise the statements of financial position as at December 31, 2025, and the statements of income, statements of changes in equity and statements of cash flows for the years then ended, and notes to the financial statements, including summary of significant accounting policies.

In our opinion, the accompanying financial statements present fairly, in all material respects, the financial position of the Company as at December 31, 2025, and its financial performance and its cash flows for the years then ended in accordance with Philippine Financial Reporting Standards (PFRSs).

Basis for Opinion

We conducted our audits in accordance with Philippine Standards on Auditing (PSAs). Our responsibilities under those standards are further described in the *Auditor's Responsibilities for the Audit of the Financial Statements* section of our report. We are independent of the Company in accordance with the Code of Ethics for Professional Accountants in the Philippines (Code of Ethics) together with the ethical requirements that are relevant to our audit of the financial statements in the Philippines, and we have fulfilled our other ethical responsibilities in accordance with these requirements and the Code of Ethics. We believe that the audit evidence we have obtained is sufficient and appropriate to provide a basis for our opinion.

Responsibilities of Management and Those Charged with Governance for the Financial Statements

Management is responsible for the preparation and fair presentation of the financial statements in accordance with PFRSs, and for such internal control as management determines is necessary to enable the preparation of financial statements that are free from material misstatement, whether due to fraud or error.

In preparing the financial statements, management is responsible for assessing the Company's ability to continue as a going concern, disclosing, as applicable, matters related to going concern and using the going concern basis of accounting unless management either intends to liquidate the Company or to cease operation, or has no realistic alternative but to do so.

Those charged with governance are responsible for overseeing the Company's financial reporting process.

Auditor's Responsibilities for the Audit of the Financial Statements

Our objectives are to obtain reasonable assurance about whether the financial statements as a whole are free from material misstatement, whether due to fraud or error, and to issue an auditor's report that includes our opinion. Reasonable assurance is a high level of assurance, but is not a guarantee that an audit conducted in accordance with PSAs will always detect a material misstatement when it exists. Misstatements can arise from fraud or error and are considered material if, individually or in the aggregate, they could reasonably be expected to influence the economic decisions of users taken on the basis of these financial statements.

As part of an audit in accordance with PSAs, we exercise professional judgment and maintain professional skepticism throughout the audit. We also:

1. Identify and assess the risks of material misstatement of the financial statements, whether due to fraud or error, design and perform audit procedure responsive to those risks, and obtain audit evidence that is sufficient and appropriate to provide a basis for our opinion. The risk of not detecting a material misstatement resulting from fraud is higher than for one resulting from error, as fraud may involve collusion, forgery, intentional omissions, misrepresentations, or the override of internal control.
2. Obtain an understanding of internal control relevant to the audit in order to design audit procedures that are appropriate in the circumstances, but not for the purpose of expressing an opinion on the effectiveness of the Company's internal control.
3. Evaluate the appropriateness of accounting policies used and the reasonableness of accounting estimates and related disclosures made by management.
4. Conclude on the appropriateness of management's use of the going concern basis of accounting and, based on audit evidence obtained, whether a material uncertainty exists related to events or conditions that may cast significant doubt on the Company's ability to continue as a going concern. If we conclude that a material uncertainty exists, we are required to draw attention in our auditor's report to the related disclosures in the financial statements or, if such disclosures are inadequate, to modify our opinion. Our conclusions are based on the audit evidence obtained up to date of our auditor's report. However, future events or conditions may cause the Company to cease to continue as a going concern.
5. Evaluate the overall presentation, structure and content of the financial statements, including the disclosures, and whether the financial statements represent the underlying transactions and events in a manner that achieves fair presentation.

We communicate with those charged with governance regarding, among other matters, the planned scope and timing of the audit and significant audit findings, including any significant deficiencies in internal control that we identify during our audit.

Other Matter

The company's financial statements as at and for the year ended December 31, 2024 were audited by another auditor on which an unqualified opinion dated April 10, 2025 was issued.

Report on the Supplementary Information Required Under Revenue Regulations No. 15-2010

Our audits were conducted for the purpose of forming an opinion on the basic financial statements taken as a whole. The supplementary information required under Revenue Regulations No. 15-2010 in Notes to the financial statements is presented for purposes of filing with the Bureau of Internal Revenue and is not a required part of the basic financial statements. Such information is the responsibility of the management of FPG Insurance Co., Inc.. The information has been subjected to the auditing procedures applied in our audits of the basic financial statements. In our opinion, the information is fairly stated, in all material respects, in relation to the basic financial statements taken as a whole.

I.T. SABADO & ASSOCIATES, CPAs
BIR Accreditation No. 07-000093-004-2023
Until July 19, 2026
PRC/BOA Registration No. 1324
Valid until April 13, 2027
SEC Accreditation No. 1324-IC (Group A)
Until 2025 audit period

By:


ISAGAN T. SABADO
Managing Partner
CPA Reg. No. 078824
Until July 10, 2028
SEC Accreditation No. 78824-IC (Group A)
TIN 145-707-022
PTR No. 8475972
January 29, 2026
Quezon City

April 13, 2026

FPG INSURANCE CO., INC.
STATEMENTS OF FINANCIAL POSITION

	December 31	
	2025	2024
ASSETS		
Cash and cash equivalents (Note 4)	₱2,101,806,866	₱2,892,111,975
Short-term investments (Note 4)	1,415,900	–
Insurance receivables – net (Note 5)	2,477,498,131	2,268,720,804
Financial assets:		
Fair value through other comprehensive income (Note 6)	1,232,733,582	978,914,565
Amortized cost (Note 6)	435,246,636	461,718,439
Fair value through profit or loss (Note 6)	83,878,519	240,809,525
Loans and receivables – net (Note 7)	135,918,214	145,747,911
Reinsurance assets (Notes 8 and 14)	3,427,353,529	3,667,746,340
Accrued interest income (Note 9)	21,983,093	32,805,465
Deferred acquisition costs (Note 10)	354,017,467	413,089,830
Investment properties (Note 11)	2,745	2,745
Property and equipment – net (Note 12)	51,524,026	42,958,570
Right-of-use assets – net (Note 28)	45,474,572	74,897,611
Deferred tax assets – net (Note 24)	144,465,994	126,119,597
Other assets – net (Note 13)	602,903,779	611,265,805
	₱11,116,223,053	₱11,956,909,182
LIABILITIES AND EQUITY		
LIABILITIES		
Insurance contract liabilities (Note 14)	₱5,381,277,165	₱5,534,047,788
Insurance payables (Note 15)	2,412,369,882	2,370,950,976
Accounts payable and accrued expenses (Note 16)	574,054,383	1,401,492,668
Deferred reinsurance commissions (Note 10)	136,934,128	147,725,489
Lease liabilities (Note 28)	55,561,006	85,621,767
Net pension liability (Note 23)	57,029,851	38,592,006
Income tax payable	5,843,414	5,963,580
	8,623,069,829	9,584,394,274
EQUITY		
Capital stock (Note 17)	373,000,000	373,000,000
Contingency surplus (Note 17)	1,376,872,354	1,356,539,104
Net unrealized losses on financial assets at FVOCI (Note 6)	(512,312)	(1,113,998)
Remeasurement losses on defined benefit obligation (Note 23)	(21,140,920)	(20,400,522)
Retained earnings:		
Unappropriated	752,428,987	651,985,209
Appropriated (Note 17)	12,505,115	12,505,115
	2,493,153,224	2,372,514,908
	₱11,116,223,053	₱11,956,909,182

See accompanying Notes to Financial Statements.

FPG INSURANCE CO., INC.
STATEMENTS OF INCOME

	Years Ended December 31	
	2025	2024
Gross earned premiums on insurance contracts (Notes 14 and 18)	₱6,056,061,064	₱5,818,600,496
Reinsurers' share of gross earned premiums on insurance contracts (Notes 14 and 18)	3,927,266,130	4,178,660,001
NET EARNED PREMIUMS	2,128,794,934	1,639,940,495
Commission income (Note 10)	380,742,216	371,438,858
Investment income – net (Note 19)	185,315,555	186,945,501
Foreign exchange gain – net (Note 25)	22,543,262	51,532,994
Gain on sale of property and equipment (Note 12)	891,464	–
OTHER INCOME	589,492,497	609,917,353
TOTAL INCOME	2,718,287,431	2,249,857,848
Gross insurance contract benefits and claims paid (Notes 14 and 20)	1,702,133,239	1,670,168,772
Reinsurers' share of gross insurance contract benefits and claims paid (Notes 14 and 20)	(611,537,671)	(754,295,590)
Gross change in insurance contract liabilities (Notes 14 and 20)	5,414,427	261,034,964
Reinsurers' share of gross change in insurance contract liabilities (Notes 14 and 20)	160,998,996	(339,286,292)
NET INSURANCE BENEFITS AND CLAIMS	1,257,008,991	837,621,854
EXPENSES		
Operating expenses (Note 21)	717,530,930	682,476,147
Commission expense (Note 10)	597,778,089	794,995,064
Interest expense (Notes 15 and 28)	20,493,997	16,364,320
TOTAL EXPENSES	1,335,803,016	1,493,835,531
TOTAL BENEFITS, CLAIMS AND OTHER EXPENSES	2,592,812,007	2,331,457,385
INCOME (LOSS) BEFORE INCOME TAX	125,475,424	(81,599,537)
PROVISION FOR (BENEFIT FROM) INCOME TAX (Note 24)	25,031,646	(24,472,649)
NET INCOME (LOSS)	₱100,443,778	(₱57,126,888)

See accompanying Notes to Financial Statements.

FPG INSURANCE CO., INC.
STATEMENTS OF COMPREHENSIVE INCOME

	Years Ended December 31	
	2025	2024
NET (LOSS) INCOME	₱100,443,778	(₱57,126,888)
OTHER COMPREHENSIVE (LOSS) INCOME		
<i>Items that will be reclassified to profit or loss in subsequent periods:</i>		
Unrealized fair value loss on financial assets at FVOCI (Note 6)	(1,027,238)	(6,907,305)
Adjustment (Note 6)	–	(9,988,382)
Transfers to profit and loss (Note 6)	1,628,924	3,841,872
	601,686	(13,053,815)
<i>Items that will not be reclassified to profit or loss in subsequent periods:</i>		
Remeasurement loss on defined benefit obligation (Note 23)	(987,198)	(4,997,752)
Tax effect	246,800	1,454,955
	(740,398)	(3,542,797)
	(138,712)	(16,596,612)
TOTAL COMPREHENSIVE INCOME (LOSS)	₱100,305,066	(₱73,723,476)

See accompanying Notes to Financial Statements.

FPG INSURANCE CO., INC.

**STATEMENTS OF CHANGES IN EQUITY
FOR THE YEARS ENDED DECEMBER 31, 2025 AND 2024**

	Capital stock (Note 17)	Contingency surplus (Note 17)	Net unrealized gain (loss) on financial assets at FVOCI (Note 6)	Remeasurement losses on defined benefit obligation (Note 23)	Retained earnings		Total
					Unappropriated	Appropriated (Note 17)	
As of January 1, 2025	₱373,000,000	₱1,356,539,104	(₱1,113,998)	(₱20,400,522)	₱651,985,209	₱12,505,115	₱2,372,514,908
Net income for the year	–	–	–	–	100,443,778	–	100,443,778
Other comprehensive loss	–	–	601,686	(740,398)	–	–	(138,712)
Total comprehensive loss for the year	–	–	601,686	(740,398)	100,443,778	–	100,305,066
Additional contribution	–	20,333,250	–	–	–	–	20,333,250
As of December 31, 2025	₱373,000,000	₱1,376,872,354	(₱512,312)	(₱21,140,920)	₱752,428,987	₱12,505,115	₱2,493,153,224
Balance at January 1, 2024	₱373,000,000	₱1,356,539,104	₱11,939,817	(₱16,857,725)	₱709,112,097	₱12,505,115	₱2,446,238,408
Net income for the year	–	–	–	–	(57,126,888)	–	(57,126,888)
Other comprehensive income (loss)	–	–	(13,053,815)	(3,542,797)	–	–	(16,596,612)
Total comprehensive income (loss) for the year	–	–	(13,053,815)	(3,542,797)	(57,126,888)	–	(73,723,500)
Additional contribution	–	–	–	–	–	–	–
As of December 31, 2024	₱373,000,000	₱1,356,539,104	(1,113,998)	(₱20,400,522)	₱651,985,209	₱12,505,115	₱2,372,514,908

See accompanying Notes to Financial Statements.

FPG INSURANCE CO., INC.
STATEMENTS OF CASH FLOWS

	Years Ended December 31	
	2025	2024
CASH FLOWS FROM OPERATING ACTIVITIES		
Income (loss) before income tax	₱125,475,424	(₱81,599,537)
Adjustments for:		
Reversal of provision of impairment (Note 21)		
Insurance receivables	(11,839,795)	(324,009)
Financial assets at amortized cost	43,197	(213,062)
Depreciation and amortization (Notes 12, 21 and 28)	47,435,469	46,496,161
Interest expense (Notes 15 and 28)	20,493,997	16,364,320
Retirement expense (Note 23)	17,450,647	13,479,806
Loss on sale of investments at FVOCI (Note 6)	1,628,924	3,841,872
Gain on sale of property and equipment (Note 12)	(891,464)	–
Dividend income (Note 19)	(4,483,933)	(5,913,223)
Unrealized foreign exchange loss (gain) – net	(22,543,262)	(51,532,991)
Fair value gain on financial assets at FVTPL (Note 6)	(43,941,970)	(5,794,317)
Interest income (Note 19)	(173,405,665)	(179,079,833)
Operating gain (loss) before working capital changes	(44,578,431)	(244,274,813)
Changes in operating assets and liabilities		
Decrease (increase) in:		
Reinsurance assets	240,392,811	(1,207,140,084)
Deferred acquisition costs	59,072,363	(8,685,726)
Loans and receivables	14,313,630	15,758,708
Other assets	8,362,026	(31,156,204)
Short-term investments	(1,415,900)	1,394,814
Insurance receivables	(177,128,522)	78,863,070
Increase (decrease) in:		
Insurance payables	41,418,906	873,733,433
Deferred reinsurance commissions	(10,791,361)	12,133,961
Insurance contract liabilities	(152,770,623)	1,237,746,208
Accounts payable and accrued expenses	(827,438,285)	142,982,342
Net cash used in (generated from) operations	(850,563,386)	871,355,709
Interest paid on funds held for reinsurers (Note 15)	(15,189,404)	(8,838,640)
Income tax paid	(43,251,409)	(31,772,196)
Net cash used in (provided by) operating activities	(909,004,199)	830,744,873
CASH FLOWS FROM INVESTING ACTIVITIES		
Proceeds from sale / maturities of:		
Financial assets at FVTPL (Note 6)	602,247,369	422,077,111
Financial assets at FVOCI (Note 6)	199,297,004	270,121,556
Financial assets at amortized cost (Note 6)	25,481,009	58,161,663
Property and equipment (Note 12)	3,109,647	–

(Forward)

	Years Ended December 31	
	2025	2024
Acquisitions of:		
Financial assets at amortized cost (Note 6)	-₱	(₱3,807,215)
Property and equipment (Note 12)	(28,796,068)	(18,537,152)
Financial assets at FVTPL (Note 6)	(401,374,393)	(316,246,141)
Financial assets at FVOCI (Note 6)	(458,858,799)	(283,950,263)
Interest received	189,891,174	173,492,372
Net cash provided by investing activities	130,996,943	301,311,931
CASH FLOWS FROM FINANCING ACTIVITIES		
Receipt of additional contributions from stockholders (Note 17)	20,333,250	-
Payment of principal and interest on lease liabilities (Note 28)	(35,365,354)	(34,547,465)
Net cash used in investing activities	(15,032,104)	(34,547,465)
NET INCREASE IN CASH AND CASH EQUIVALENTS	(793,039,360)	1,097,509,339
EFFECT OF FOREIGN EXCHANGE GAIN	2,734,251	(18,502,757)
CASH AND CASH EQUIVALENTS AT BEGINNING OF YEAR	2,892,111,975	1,813,105,393
CASH AND CASH EQUIVALENTS AT END OF YEAR (Note 4)	₱2,101,806,866	₱2,892,111,975

See accompanying Notes to Financial Statements.

FPG INSURANCE CO., INC.

NOTES TO FINANCIAL STATEMENTS

1. Corporate Information

FPG Insurance Co., Inc. (the Company) is a non-life insurance company incorporated in the Philippines on June 05, 1958. The Company offers insurance coverage for fire and allied perils, motor, casualty, marine, medical, personal accident, engineering, surety and bonds. The Company has eight (8) branches located in Angeles, Dagupan, Binondo, Davao, Cagayan de Oro, Quezon City, Cebu, Ortigas, and three (3) satellite offices located in Laguna, Iloilo City and Alabang. On April 30, 2025, the Company closed its General Santos branch as part of its business rationalization and cost optimization strategy. It has a certificate of authority issued by the Insurance Commission (IC) to transact in non-life business until December 31, 2027.

The Philippine Securities and Exchange Commission (SEC) approved the Amended Articles of Incorporation on January 29, 2008 extending the life of the Company for another 50 years.

In a special BOD meeting on November 19, 2014, it was approved that the Articles of Incorporation and By-laws will be further amended to change the Company's name from Federal Phoenix Assurance Co., Inc. to FPG Insurance Co., Inc. On January 5, 2015 and February 3, 2015, the amendment of Articles of Incorporation and By-laws was approved by the Insurance Commission (IC) and SEC, respectively.

The Company's equity is being held by Golden Eight Group Limited (Parent Company), a holding company incorporated in the British Virgin Islands.

The registered office address of the Company is 6th Floor, Zuellig Building, Makati Avenue corner Paseo de Roxas, Makati City.

On August 14, 2025, the Company announced its planned merger with The Mercantile Insurance Co. Inc. ("TMIC"), a domestic non-life insurance company, with TMIC as the surviving entity, which was formally approved by Company's Board of Directors and stockholders unanimously on September 10, 2025. On September 23, 2025, the Company submitted with the Insurance Commission (IC) its application for the approval of its merger with The Mercantile Insurance Company, Inc. (Mercantile). The IC has issued its favorable endorsement of the merger on October 15, 2025. On the basis of the endorsement, the Company and Mercantile initiated on October 29, 2025 its application with the Securities and Exchange Commission (SEC) of the approval of the merger. As of April 13, 2026, the application is being reviewed by the SEC Financial Analysis and Audit Division (FAAD).

In parallel with the SEC application, the Company and Mercantile notified the Philippine Competition Commission (PCC) of the merger. The PCC has cleared the transaction on January 8, 2026.

Approval and authorization for issuance of financial statements

The accompanying financial statements were approved and authorized for issue by the Board of Directors (BOD) on April 13, 2026.

2. Summary of Material Accounting Policies

Basis of Preparation

The accompanying financial statements have been prepared using the historical cost basis, except for financial assets at fair value through profit or loss (FVTPL), fair value through other comprehensive income (FVOCI), and retirement liability and planned assets that have been measured at fair value.

The financial statements are presented in Philippine peso (PHP) which is also the Company's functional currency. All amounts are rounded off to the nearest peso, unless otherwise indicated.

Statement of Compliance

The financial statements of the Company have been prepared in compliance with Philippine Financial Reporting Standards (PFRS) Accounting Standards.

Changes in Accounting Policies

The accounting policies adopted are consistent with those of the previous financial year, except for the adoption of new standards that became effective in 2025. The Company has not early adopted any standard, interpretation or amendment that has been issued but is not yet effective.

Unless otherwise indicated, adoption of these new standards did not have an impact on the financial statements of the Company.

- Amendments to PAS 21, *Lack of exchangeability*
The amendments specify how an entity should assess whether a currency is exchangeable and how it should determine a spot exchange rate when exchangeability is lacking.

The amendments are effective for annual reporting periods beginning on or after January 1, 2025. Earlier adoption is permitted and that fact must be disclosed. When applying the amendments, an entity cannot restate comparative information.

Standards Issued but not yet Effective

Pronouncements issued but not yet effective are listed below. The Company intends to adopt these pronouncements when they become effective. Adoption of these pronouncements is not expected to have any significant impact on the financial statements of the Company unless otherwise indicated.

Effective beginning on or after January 1, 2026

- Amendments to PFRS 9 and PFRS 7, *Classification and Measurement of Financial Instruments*
- Annual Improvements to PFRS Accounting Standards—*Volume 11*
 - Amendments to PFRS 1, *Hedge Accounting by a First-time Adopter*
 - Amendments to PFRS 7, *Gain or Loss on Derecognition*
 - Amendments to PFRS 9, *Lessee Derecognition of Lease Liabilities and Transaction Price*
 - Amendments to PFRS 10, *Determination of a 'De Facto Agent'*
 - Amendments to PAS 7, *Cost Method*
- Amendments to PFRS 9 and PFRS 7, *Contracts Referencing Nature-dependent Electricity*

Effective beginning on or after January 1, 2027

- PFRS 17, *Insurance Contracts*
PFRS 17 is a comprehensive new accounting standard for insurance contracts covering recognition and measurement, presentation and disclosure. Once effective, PFRS 17 will replace PFRS 4, *Insurance Contracts*. This new standard on insurance contracts applies to all types of

insurance contracts (i.e., life, non-life, direct insurance and re-insurance), regardless of the type of entities that issue them, as well as to certain guarantees and financial instruments with discretionary participation features. A few scope exceptions will apply.

The overall objective of PFRS 17 is to provide an accounting model for insurance contracts that is more useful and consistent for insurers. In contrast to the requirements in PFRS 4, which are largely based on grandfathering previous local accounting policies, PFRS 17 provides a comprehensive model for insurance contracts, covering all relevant accounting aspects.

The core of PFRS 17 is the general model, which is based on the following building blocks for each group of insurance contracts: (a) fulfilment cash flows and (b) a contractual service margin or CSM (i.e., unearned profit). This is supplemented by:

- A specific adaptation for contracts with direct participation features (the variable fee approach)
- A simplified approach (the premium allocation approach) mainly for short-duration contracts

On December 15, 2021, the FRSC amended the mandatory effective date of PFRS 17 from January 1, 2024 to January 1, 2025. This is consistent with Circular Letter No. 2020-62 issued by the Insurance Commission which deferred the implementation of PFRS 17 by two (2) years after its effective date as decided by the IASB. On March 10, 2025, the Insurance Commission issued Circular Letter no, 2025-04 further deferring the adoption from January 1, 2025 to January 1, 2027.

PFRS 17 is effective for reporting periods beginning on or after January 1, 2027, with full retrospective application from the transition date is required. The transition date is the beginning of the annual reporting period immediately preceding the date of initial application. If it is impracticable to apply PFRS 17 retrospectively for a group of insurance contracts, the Company must apply either the modified retrospective approach or the fair value approach. Early application is permitted.

The Company does not intend to early adopt PFRS 17. The Company continues its assessment of the implications of this standard and expects that it will have a significant impact on the Company's financial statements as the requirements of the new standard are complex and require application of significant judgments and estimates. Specifically, the establishment of CSM (or the unearned profits) on in-force insurance contracts will result in adjustments in insurance contract liabilities and corresponding movements in equity upon transition. Subsequently, the Company expects changes in the timing and recognition of the profits via amortization of the CSM into income as services are provided. The Company is continuously assessing the potential impact of all other changes including accounting policy choices available under PFRS 17 on how insurance contract liabilities are measured and the impact on presentation and disclosure of the financial results in the financial statements.

The adoption of PFRS 17 requires significant changes to the Company's accounting and reporting processes. To ensure readiness, the Company has invested on financial technology platforms that will enhance data capture, improve assumptions, among others and subsequently, produce management information for financial planning and enhance business and strategic analyses.

The Company has established a transition program for PFRS 17 and has dedicated significant resources to execute and oversee the plan to manage operational, regulatory, and business and strategic risks associated with the implementation of this standard.

For the year ended December 31, 2025, the Company has yet to perform parallel reporting as it is currently working on building and testing the system to be used in PFRS 17 implementation. Further, the Company is closely coordinating with PIRA, Inc. and External consultants to ensure alignment with the industry implementation.

A reliable estimate of the impact to the Company's financial statements arising from the initial application of PFRS 17 is not yet available as implementation is still in progress which includes enhancements to the Company's accounting systems and updating of the accounting manual and operating controls.

- PFRS 18, *Presentation and Disclosure in Financial Statements*
This is the new standard on presentation and disclosure on financial statements, which replaces PAS 1, with a focus on updates to the statement of profit or loss.

The key new concepts introduced in PFRS 18 relate to:

- The structure of the statement of profit or loss with defined subtotals;
- Requirement to determine the most useful structure summary for presenting expenses in the statement of profit or loss
- Required disclosures in a single note within the financial statements for certain profit or loss performance measures that are reported outside an entity's financial statements (that is, management-defined performance measures); and
- Enhanced principles on aggregation and disaggregation which apply to the primary financial statements and notes in general

The adoption of PFRS 18 is not expected to have a financial impact to the financial statements of the company apart from the presentation of the profit or loss statement and relevant disclosures in the notes.

- PFRS 19, *Subsidiaries without Public Accountability*
- SEC MC No. 16, Series of 2025 (PFRS S1 and S2) – The SEC has adopted PFRS S1 (General Requirements for Disclosure of Sustainability-related Financial Information) and PFRS S2 (Climate-related Disclosures). For the Company, mandatory adoption begins in FY 2026.

Deferred effectivity

- *Amendments to PFRS 10 and PAS 28, Sale or Contribution of Assets between an Investor and its Associate or Joint Venture* - The Financial Reporting Standards Council (FRSC) has deferred the effective date of these amendments indefinitely. The Company will continue to monitor the status and will adopt the amendments once the deferral is lifted.

Summary of Material Accounting Policy Information

Foreign Currency Transactions and Translations

Transactions in foreign currencies are initially recorded at the foreign currency rate prevailing at the transaction date. Monetary assets and liabilities denominated in foreign currencies are retranslated at the foreign currency rate of exchange prevailing at the reporting date. Non-monetary items that are measured in terms of historical cost in a foreign currency are translated using the exchange rate as at the date of the initial transaction and are not subsequently restated. All foreign exchange differences

are taken to the statement of income, except where it relates to equity securities at FVOCI where gains or losses are recognized directly in other comprehensive income.

Product Classification

Insurance contracts are defined as those contracts under which the Company (the insurer) accepts significant insurance risk from another party (the policyholders) by agreeing to compensate the policyholders if a specified uncertain future event (the insured event) adversely affects the policyholder. As a general guideline, the Company defines significant insurance risk, by comparing benefits paid with benefits payable if the insured event did not occur. Insurance contracts can also transfer financial risk. Financial risk is the risk of a possible future change in one or more of a specified interest rate, security price, commodity price, foreign exchange rate, index of price or rates, a credit rating or credit index or other variable. Insurance contracts can also transfer financial risk.

Once a contract has been classified as an insurance contract, it remains an insurance contract for the remainder of its lifetime, even if the insurance risk reduces significantly during this period, unless all rights and obligations are extinguished or has expired. Investment contracts can however be reclassified as insurance contracts after inception if the insurance risk becomes significant.

Use of Estimates, Assumptions and Judgements

The preparation of the financial statements necessitates the use of estimates, assumptions, and judgements. These estimates and assumptions affect the reported amounts of assets and liabilities at the end of the reporting period as well as affecting the reported income and expenses for the period. Although the estimates are based on management's best knowledge and judgement of current facts as at the end of the reporting period, the actual outcome may differ from these estimates, possibly significantly. For further information on critical estimates and judgements, refer to Note 3.

Fair Value Measurement

For measurement and disclosure purposes, the Company determines fair value of an asset or a liability at initial measurement date or at each statement of financial position date. Fair value is the price that would be received to sell an asset or paid to transfer the liability in an orderly transaction between market participants at the measurement date.

The fair value measurement is based on the presumption that the transaction to sell the asset or transfer the liability takes place either:

- in the principal market for the asset or liability, or
- in the absence of a principal market, in the most advantageous market for the asset or liability

The principal or the most advantageous market must be accessible to the Company.

The fair value of an asset or a liability is measured using the assumptions that the market participants would use when pricing the asset or liability assuming the market participants act in their economic best interest.

A fair value measurement of a nonfinancial asset takes into account a market participant's ability to generate economic benefits by using the asset in its highest and best use or by selling it to another market participant that would use the asset in its highest and best use.

The Company uses valuation techniques that are appropriate in the circumstances and for which sufficient data is available to measure fair value, maximizing the use of relevant observable inputs and minimizing the use of unobservable inputs.

All assets and liabilities for which fair value is measured or disclosed in the financial statements are categorized within the fair value hierarchy, described as follows, based on the lowest level input that is significant to the fair value measurement as a whole:

- Level 1 - Quoted (unadjusted) market prices in active markets for identical assets or liabilities
- Level 2 - Valuation techniques for which the lowest level input that is significant to the fair value measurement is directly or indirectly observable
- Level 3 - Valuation techniques for which the lowest level input that is significant to the fair value measurement is unobservable

For assets and liabilities that are recognized in the financial statement on a recurring basis, the Company determines whether transfers have occurred between levels in the hierarchy by re-assessing categorization (based on the lowest level input that is significant to the fair value measurement as a whole) and at the end of each reporting period.

Cash and Cash Equivalents

Cash comprises cash on hand and in banks. Cash equivalents are short-term, highly liquid investments that are readily convertible to known amounts of cash with original maturities of three months or less from the date of acquisition and are subject to insignificant risk of changes in value.

Short-term Investments

Short-term investments are short-term, highly liquid investments that are readily convertible to known amounts of cash with original maturities of more than three months but less than one (1) year from dates of placement. These earn interest at the respective short-term investment rates.

Insurance Receivables

Insurance receivables are recognized on policy inception dates and measured on initial recognition at the fair value of the consideration receivable for the period of coverage. Subsequent to initial recognition, insurance receivables are reviewed for impairment whenever events or circumstances indicate that the carrying amount may not be recoverable, at least annually, with the impairment loss recorded in the statement of income.

Insurance receivables are derecognized following the derecognition criteria of financial assets.

Financial Instruments

Date of recognition

The company has elected for the early adoption of PFRS 9 in 2022. Financial instruments within the scope of PFRS 9, *Financial Instruments*, are recognized in the statement of financial position when the Company becomes a party to the contractual provisions of the instrument. Purchases or sales of financial assets that require delivery of assets within the time frame established by regulation or convention in the marketplace are recognized using the settlement date accounting.

Initial measurement

Financial assets are classified, at initial recognition, as subsequently measured at amortized cost, FVOCI, and FVTPL.

The classification of financial assets at initial recognition depends on the financial asset's contractual cash flow characteristics and the Company's business model for managing them. The Company initially measures a financial asset at its fair value plus, in the case of a financial asset not at fair value through profit or loss, transaction costs.

Insurance receivables are recognized on policy inception dates measured on initial recognition at the fair value of the consideration receivable for the period of coverage.

In order for a debt financial asset to be classified and measured at amortized cost or FVOCI, it needs to give rise to cash flows that are 'solely payments of principal and interest (SPPI)' on the principal amount outstanding. This assessment is referred to as the SPPI test and is performed at an instrument level.

The Company's business model for managing financial assets refers to how it manages its financial assets in order to generate cash flows. The business model determines whether cash flows will result from collecting contractual cash flows, selling the financial assets, or both.

Purchases or sales of financial assets that require delivery of assets within a time frame established by regulation or convention in the marketplace (regular way trades) are recognized on the trade date, i.e., the date that the Company commits to purchase or sell the asset.

Subsequent measurement

For purposes of subsequent measurement, financial assets are classified in four categories:

- Financial assets at amortized cost (debt instruments),
- Financial assets at fair value through OCI with recycling of cumulative gains and losses (debt instruments),
- Financial assets designated at fair value through OCI with no recycling of cumulative gains and losses upon derecognition (equity instruments), and
- Financial assets at fair value through profit or loss.

Financial assets at amortized cost (debt instruments)

The Company measures financial assets at amortized cost if both of the following conditions are met:

- The financial asset is held within a business model with the objective to hold financial assets in order to collect contractual cash flows, and
- The contractual terms of the financial asset give rise on specified dates to cash flows that are SPPI on the principal amount outstanding.

Financial assets at amortized cost are subsequently measured using the effective interest method and are subject to impairment. Gains and losses are recognized in profit or loss when the asset is derecognized, modified or impaired.

As of December 31, 2025 and 2024, the Company's financial assets at amortized cost includes 'cash and cash equivalents', 'short-term investments', 'loans and receivables', 'financial assets at amortized cost', 'insurance receivables', 'accrued interest income', 'reinsurance recoverable on paid and unpaid losses', and 'security deposits.'

Financial assets at fair value through OCI (debt instruments)

The Company measures financial assets at fair value through OCI if both of the following conditions are met:

- The financial asset is held within a business model with the objective of both holding to collect contractual cash flows and selling, and
- The contractual terms of the financial asset give rise on specified dates to cash flows that are SPPI on the principal amount outstanding.

For debt instruments at fair value through OCI, interest income, foreign exchange revaluation and impairment losses or reversals are recognized in the statement of profit or loss and computed in the same manner as for financial assets measured at amortized cost. The remaining fair value changes are recognized in OCI. Upon derecognition, the cumulative fair value change recognized in OCI is recycled to profit or loss.

As of December 31, 2025 and 2024, the Company's financial assets at fair value through OCI includes investments in quoted debt instruments.

Financial assets at fair value through OCI (equity instruments)

Upon initial recognition, the Company can elect to classify irrevocably its equity investments as equity instruments designated at fair value through OCI when they meet the definition of equity under PAS 32, *Financial Instruments: Presentation* and are not held for trading. The classification is determined on an instrument-by-instrument basis.

Gains and losses on these financial assets are never recycled to profit or loss. Dividends are recognized as other income in the statement of income when the right of payment has been established, except when the Company benefits from such proceeds as a recovery of part of the cost of the financial asset, in which case, such gains are recorded in OCI. Equity instruments designated at fair value through OCI are not subject to impairment assessment.

In 2025 and 2024, the Company has not classified any of its equity investments to be measured at fair value through OCI.

Financial assets at FVTPL

Financial assets at FVTPL include financial assets held for trading, financial assets designated upon initial recognition at fair value through profit or loss, or financial assets mandatorily required to be measured at fair value. Financial assets are classified as held for trading if they are acquired for the purpose of selling or repurchasing in the near term. Derivatives, including separated embedded derivatives, are also classified as held for trading unless they are designated as effective hedging instruments. Financial assets with cash flows that are not solely payments of principal and interest are classified and measured at fair value through profit or loss, irrespective of the business model. Notwithstanding the criteria for debt instruments to be classified at amortized cost or at fair value through OCI, as described above, debt instruments may be designated at fair value through profit or loss on initial recognition if doing so eliminates, or significantly reduces, an accounting mismatch.

Financial assets at FVTPL are carried in the statement of financial position at fair value with net changes in fair value recognized in the statement of profit or loss.

As of December 31, 2025 this category includes listed equity investments which the Company had not irrevocably elected to classify at fair value through OCI. Dividends on listed equity investments are also recognized as other income in the statement of profit or loss when the right of payment has been established.

The measurement of financial liabilities depends on their classification, as described below:

Financial liabilities at amortized cost

This is the category most relevant to the Company. After initial recognition, interest-bearing loans and borrowings are subsequently measured at amortized cost using the effective interest rate method. Gains and losses are recognized in profit or loss when the liabilities are derecognized as well as through the effective interest rate amortization process.

Amortized cost is calculated by taking into account any discount or premium on acquisition and fees or costs that are an integral part of the effective interest rate. The effective interest rate amortization is included as finance costs in the statement of profit or loss.

The Company's financial liabilities at amortized cost include 'accounts payable and accrued expenses,' 'insurance payables' and 'lease liability.'

Other financial liabilities

Financial liabilities are classified, at initial recognition, as financial liabilities at fair value through profit or loss, loans and borrowings, payables, or as derivatives designated as hedging instruments in an effective hedge, as appropriate.

All financial liabilities are recognized initially at fair value and, in the case of loans and borrowings and payables, net of directly attributable transaction costs.

Offsetting

Financial assets and financial liabilities are offset and the net amount is reported in the statement of financial position if, and only if, there is a currently enforceable legal right to offset the recognized amounts and there is an intention to settle on a net basis, or to realize the asset and settle the liability simultaneously. The Company assesses that it has a currently enforceable right of offset if the right is not contingent on a future event and is legally enforceable in the normal course of business, event of default, and event of insolvency or bankruptcy of the Company and all of the counterparties.

Impairment of Financial Assets

The Company recognizes an allowance for ECLs for all debt instruments not held at fair value through profit or loss. ECLs are based on the difference between the contractual cash flows due in accordance with the contract and all the cash flows that the Company expects to receive, discounted at an approximation of the original effective interest rate. The expected cash flows will include cash flows from the sale of collateral held or other credit enhancements that are integral to the contractual terms.

ECLs are recognized in two stages. For credit exposures for which there has not been a significant increase in credit risk since initial recognition, ECLs are provided for credit losses that result from default events that are possible within the next 12 months (a 12-month ECL). For those credit exposures for which there has been a significant increase in credit risk since initial recognition, a loss allowance is required for credit losses expected over the remaining life of the exposure, irrespective of the timing of the default (a lifetime ECL).

For insurance receivables and loans and receivables, the Company applies a simplified approach in calculating ECLs. Therefore, the Company does not track changes in credit risk, but instead recognizes a loss allowance based on lifetime ECLs at each reporting date. The Company has established a provision matrix that is based on its historical credit loss experience, adjusted for forward-looking factors specific to the debtors and the economic environment.

For cash, short-term investments, and debt instruments at amortized cost and fair value through OCI, the Company applies the low credit risk simplification. At every reporting date, the Company evaluates whether the debt instrument is considered to have low credit risk using all reasonable and supportable information that is available without undue cost or effort. In making that evaluation, the Company reassesses the internal credit rating of the financial assets. In addition, the Company considers that there has been a significant increase in credit risk when contractual payments are more than 30 days past due.

The Company considers a financial asset in default when contractual payments are 90 days past due or depending on the particular credit terms agreed upon, whichever is later. However, in certain cases, the Company may also consider a financial asset to be in default when internal or external information indicates that the Company is unlikely to receive the outstanding contractual amounts in full before taking into account any credit enhancements held by the Company. A financial asset is written off when there is no reasonable expectation of recovering the contractual cash flows.

ECL parameters and methodologies

ECL is a function of the probability of default (PD), exposure at default (EAD) and loss given default (LGD) with each of the parameter independently modelled.

The PD represents the likelihood that a credit exposure will not be repaid and will go into default in either a 12-month horizon for Stage 1 or lifetime horizon for Stage 2. The PD for each individual instrument is based on issuers' external credit rating and apply forecasting techniques using historical data to estimate the average cumulative default rates at a given point in time and workout forward-looking PD curve per rating grade projected using economic forecasts.

EAD is modelled on historical data and represents an estimate of the outstanding amount of credit exposure at the time a default may occur. For the Company's financial assets, EAD represents their carrying values.

LGD is the amount that may not be recovered in the event of default and is modelled based on issuers' external credit rating. For issuers without internal nor external credit rating, LGD estimation is modeled using benchmarking approach where comparable companies having the same industry and similar financial characteristics as that of the issuer are considered.

For insurance receivables and loans and receivables, the Company applies a simplified approach in calculating ECLs. Therefore, the Company does not track changes in credit risk, but instead recognizes a loss allowance based on lifetime ECLs at each reporting date. For related party transactions, the Company does not expect any significant credit risk and therefore, the probability of default and resulting ECL is minimal. Balances will be reviewed at least annually for recoverability and specific impairment will be made as necessary.

Economic overlays

The Company incorporates economic overlays into the measurement of ECL to add a forward-looking risk measure parallel to the expected future macroeconomic atmosphere. A broad range of economic indicators were considered for the economic inputs. The inputs and models used for calculating ECL may not always capture all characteristics of the market at the date of the financial statements. To address this, quantitative adjustments or overlays are occasionally made as temporary adjustments when such differences are significantly material. Overlay factors are modeled using Regression Analysis (backward elimination method).

Derecognition of Financial Assets and Financial Liabilities

Financial asset

A financial asset (or, where applicable, a part of a financial asset or part of a group of similar financial assets) is primarily derecognized (i.e., removed from the Company's statement of financial position) when:

- The right to receive cash flows from the asset has expired, or
- The Company has transferred its right to receive cash flows from the asset or has assumed an obligation to pay the received cash flows in full without material delay to a third party under a 'pass-through' arrangement; and either (a) the Company has transferred substantially all the risks and rewards of the asset, or (b) the Company has neither transferred nor retained substantially all the risks and rewards of the asset, but has transferred control of the asset.

When the Company has transferred its right to receive cash flows from an asset or has entered into a pass-through arrangement, it evaluates if, and to what extent, it has retained the risks and rewards of ownership. When it has neither transferred nor retained substantially all of the risks and rewards of the asset, nor transferred control of the asset, the Company continues to recognize the transferred asset to the extent of its continuing involvement. In that case, the Company also recognizes an associated liability. The transferred asset and the associated liability are measured on a basis that reflects the rights and obligations that the Company has retained.

Continuing involvement that takes the form of a guarantee over the transferred asset is measured at the lower of the original carrying amount of the asset and the maximum amount of consideration that the Company could be required to repay.

Financial liability

A financial liability is derecognized when the obligation under the liability is discharged or cancelled or expires. When an existing financial liability is replaced by another from the same lender on substantially different terms, or the terms of an existing liability are substantially modified, such an exchange or modification is treated as the derecognition of the original liability and the recognition of a new liability. The difference in the respective carrying amounts is recognized in the statement of profit or loss.

Reinsurance assumed

The Company also assumes reinsurance risk in the normal course of business for non-life insurance contracts where applicable. Premiums and claims on assumed reinsurance are recognized as revenue or expenses in the same manner as they would be if the reinsurance were considered direct business, taking into account the product classification of the reinsured business. Reinsurance liabilities represent balances due to insurance companies. Amounts payable are estimated in a manner consistent with the related reinsurance contract.

Reinsurance Assets

The Company cedes insurance risk in the normal course of business. Reinsurance assets represent balances due from reinsurance companies. Recoverable amounts are estimated in a manner consistent with the outstanding claims provision and are in accordance with the reinsurance contract.

An impairment review is performed at each reporting date or more frequently when an indication of impairment arises during the reporting year. Impairment occurs when objective evidence exists that the Company may not recover outstanding amounts under the terms of the contract and when the impact on the amounts that the Company will receive from the reinsurer can be measured reliably. The impairment loss is charged against the statement of income.

Ceded reinsurance arrangements do not relieve the Company from its obligations to policyholders.

The Company also assumes reinsurance risk in the normal course of business for insurance contracts. Premiums and claims on assumed reinsurance are recognized as income and expenses in the same manner as they would be if the reinsurance were considered direct business, taking into account the product classification of the reinsured business. Reinsurance liabilities represent balances due to reinsurance companies. Amounts payable are estimated in a manner consistent with the associated reinsurance contract.

Premiums and claims are presented on a gross basis for both ceded and assumed reinsurance.

Reinsurance assets or liabilities are derecognized when the contractual rights are extinguished or expired or when the contract is transferred to another party.

When the Company enters into a proportional treaty reinsurance agreement for ceding out its insurance business, the Company initially recognizes a liability at transaction price upon inception of the underlying contract. Subsequent to initial recognition, the portion of the amount initially recognized as a liability which is presented as 'insurance payables' in the liabilities section of the company statement of financial position will be withheld and recognized as 'funds held for reinsurers'. The amount of funds held by reinsurers is a percentage of the insurance payable, as required by the IC and also included as part of the insurance payables in the liabilities section of the company statement of financial position. The amount withheld is generally released after a year (assuming that the underlying agreement is due within a year) or when treaty agreement is terminated.

Deferred Acquisition Costs (DAC)

Commission and other acquisition costs incurred during the financial period that vary with and are related to securing new insurance contracts and or renewing existing insurance contracts, but which relates to subsequent financial periods, are deferred to the extent that they are recoverable out of future revenue margins. All other acquisition costs are recognized as an expense when incurred.

Subsequent to initial recognition, these costs are amortized using the 24th method. Amortization is charged against the statement of income. The unamortized acquisition costs are shown as "Deferred Acquisition Costs" in the assets section of the statement of financial position.

An impairment review is performed at each end of the reporting period or more frequently when an indication of impairment arises. The carrying value is written down to the recoverable amount and the impairment loss is charged against the statement of income. The deferred acquisition cost is also considered in the liability adequacy test for each end of the reporting period.

Investment Property

Land held for long term rental yields and/or for capital appreciation is classified as investment property. In the same way, land held for currently undetermined future use is an investment property.

Investment property is carried at cost net of any impairment in value.

Investment property is derecognized when it has either been disposed of or the investment property is permanently withdrawn from use and no future benefit is expected from its disposal. Any gains or losses from derecognition of an investment property are recognized in the statement of income in the year of derecognition.

Transfers are made to investment property when there is a change in use, evidenced by the end of owner occupation, commencement of an operating lease to another party or completion of construction or development. Transfers are made from investment property when there is a change in use, evidenced by commencement of owner occupation or commencement of development with a view to sale.

Property and Equipment

Property and equipment are carried at cost less accumulated depreciation and amortization and any impairment in value.

The initial cost of property and equipment comprises its purchase price, including any directly attributable costs of bringing the asset to its working condition and location for its intended use. Subsequent costs are included in the asset's carrying amount or recognized as a separate asset, as appropriate, only when it is probable that future economic benefits associated with the item will flow to the Company and the cost of the item can be measured reliably. All other repairs and maintenance expenses are charged to the statement of income during the financial period in which they are incurred.

Depreciation and amortization are computed using the straight-line method over the estimated useful lives of the related assets as follows:

	Years
Computer equipment	3-5
Transportation equipment	5
Office furniture, fixtures and equipment	3
Leasehold improvements	3 or remaining lease term, whichever is shorter

The estimated useful lives and the depreciation and amortization method are reviewed periodically to ensure that the period and the method of depreciation and amortization are consistent with the expected pattern of economic benefits from items of property and equipment.

An item of property and equipment is derecognized upon disposal or when no future economic benefits are expected to arise from the continued use of the asset. Any gain or loss arising on derecognition of the asset (calculated as the difference between the net disposal proceeds and the carrying amount of the item) is included in the statement of income in the year the item is derecognized.

Impairment of Nonfinancial Assets

The Company assesses at each end of the reporting period whether there is an indication that an asset may be impaired. If any such indication exists, or when annual impairment testing for an asset is required, the Company makes an estimate of the asset's recoverable amount. An asset's recoverable amount is the higher of fair value less costs to sell and its value in use and is determined for an individual asset, unless the asset does not generate cash inflows that are largely independent of those from other assets or group of assets. Where the carrying amount of an asset exceeds its recoverable amount, the asset is considered impaired and is written down to its recoverable amount. In assessing value in use, the estimated future cash flows are discounted to their present value using a pre-tax discount rate that reflects current market assessments of the time value of money and the risks specific to the asset. Impairment losses of continuing operations are recognized in the statement of income in those expense categories consistent with the function of the impaired asset.

For assets excluding goodwill, an assessment is made at each end of the reporting period as to whether there is any indication that previously recognized impairment losses may no longer exist or may have decreased. If any such indication exists, the recoverable amount is estimated. A previously recognized impairment loss is reversed only if there has been a change in the assumptions used to determine the asset's recoverable amount since the last impairment loss was recognized. If such is the case, the carrying amount of the asset is increased to its recoverable amount. That increased amount cannot exceed the carrying amount that would have been determined, net of depreciation and amortization, had no impairment loss been recognized for the asset in prior years. Such reversal is recognized in the statement of income unless the asset is carried at revalued amount, in which case, the reversal is treated as a revaluation increase. After such reversal, the depreciation and amortization charge are adjusted in future periods to allocate the asset's revised carrying amount, less any residual value, on a systematic basis over its remaining estimated useful life.

Creditable Withholding Taxes (CWTs)

Creditable withholding pertains to the tax paid by the Company that is withheld by its counterparty for the payment of its expenses and other purchases. These CWTs are initially recorded at cost as an asset under "other assets" account. At each end of the tax reporting deadline, these CWTs may either be offset against future income tax payable or be claimed as a refund from the taxation authorities at the option of the Company. In light of the merger, the option to claim a refund of excess CWTs is no longer available.

At each end of the reporting period, an assessment for impairment is performed as to the recoverability of these CWTs.

Value-added Tax (VAT)

Revenue, expenses and assets are recognized net of the amount of sales tax except:

- where the tax incurred on a purchase of assets or services is not recoverable from the tax authority, in which case the tax is recognized as part of the cost of acquisition of the asset or as part of the expense item as applicable; and
- receivables and payables that are stated with the amount of tax included.

The net amount of tax recoverable from, or payable to, the tax authority is included as part of "other assets" or "accounts payable and accrued expenses" in the statement of financial position.

Insurance Contract Liabilities

Insurance contract liabilities are recognized when contracts are entered into and premiums are charged.

Premium liabilities

Premium liabilities is equal to the provision for unearned premiums plus the difference between the provision for unexpired risk and the provision for unearned premiums, net of deferred acquisition costs, if the provision for unexpired risk is greater than the provision for unearned premiums net of deferred acquisition costs. Otherwise, it is equal to the provision for unearned premiums.

Provision for Unearned Premiums

The proportion of written premiums, gross of commissions payable to intermediaries, attributable to subsequent periods or to risks that have not yet expired is deferred as provision for unearned premiums. Premiums from insurance contracts are recognized as revenue over the period of the contracts using the 24th method for policies with period of more than 12 months or 365th method for policies with period of less than 12 months. The portion of the premiums written that relate to the unexpired periods of the policies at end of the reporting period are accounted for as provision for unearned premiums as part of insurance contract liabilities and presented in the liabilities section of the statement of financial position. The change in the provision for unearned premiums is taken to profit or loss in order that revenue is recognized over the period of risk. Further provisions are made to cover claims under unexpired insurance contracts which may exceed the unearned premiums and the premiums due in respect of these contracts.

Provision for unexpired risk

Provision for unexpired risk (URR) is the best estimate that relates to expected future claim payments and related expenses to be incurred after the valuation date, arising from future events. This shall be calculated as the best estimate of future claims and expenses for all classes of business, with MfAD.

Provisions for claims reported, provision for claims Incurred But Not Reported (IBNR) losses, claims handling expense (CHE) and Margin for Adverse Deviation (MfAD)

Provision for claims reported and IBNR losses are based on the estimated ultimate cost of all claims incurred but not settled at the end of the reporting period, whether reported or not, together with related claims handling costs and reduction for the expected value of salvage and other recoveries. Delays can be experienced in the notification and settlement of certain types of claims, therefore the ultimate cost of which cannot be known with certainty at the reporting date. The IBNR shall be calculated based on standard actuarial projection techniques or combination of such techniques, such as but not limited to the chain ladder method, the expected loss ratio approach, the Born Huetter - Ferguson method. At each reporting date, prior year claims estimates are reassessed for adequacy and changes made are charged to provision.

The Company shall include an MFAD to allow for inherent uncertainty of the best estimate of the policy reserves which shall be determined at least on an annual basis based on standard projection techniques or combination of such techniques such as, but not limited to, the Mack Method, Bootstrapping Method, Stochastic Chain Ladder Method to bring the actuarial estimate of the policy liabilities at the 75% level of sufficiency.

Provision for claims handling expense (CHE) is also calculated to cover estimated expenses of settling all claims, both reported and unreported, outstanding as of the reporting date.

Quarterly, an actuarial valuation is performed on the gross and net claims and premium liabilities to ensure that the reserves are in compliance with the Valuation Standards for Non-Life Insurance Policy Reserves as required by the IC guided by Sections 219 and 220 of the Amended Insurance

Code (Republic Act (RA) No. 10607) along with Circular Letters No. 2018-18 and No. 2018-19. Additional reserves are set up if the result of the actuarial investigation shows that the existing balances are not in accordance with the mandate of IC.

Claim cost recognition

Liabilities for unpaid claim costs and claim adjustment expenses relating to insurance contracts are accrued when the insured events occur.

An insurance contract remains in force at the inception date of policy until its maturity or expiry regardless of the number of the claims reported and, for as long as the coverage is sufficient.

Insurance Payables

Insurance payables are recognized when due and measured on initial recognition at the fair value of the consideration received less attributable transaction cost. Subsequent to initial recognition, these are measured at amortized cost using the effective interest rate method.

Insurance payables are derecognized when the obligation under the liability is settled, cancelled or expired.

Pension Cost

The net defined benefit liability or asset is the aggregate of the present value of the defined benefit obligation at the end of the reporting period reduced by the fair value of plan assets (if any), adjusted for any effect of limiting a net defined benefit asset to the asset ceiling. The asset ceiling is the present value of any economic benefits available in the form of refunds from the plan or reductions in future contributions to the plan.

The cost of providing benefits under the defined benefit plans is actuarially determined using the projected unit credit method.

Defined benefit cost comprises the following:

- Service cost
- Net interest on the net defined benefit liability or asset
- Remeasurements of net defined benefit liability or asset

Service cost, which includes current service cost, past service cost and gains or losses on non-routine settlements are recognized as expense in profit or loss. Past service cost is recognized when plan amendment or curtailment occurs. These amounts are calculated periodically by independent qualified actuary.

Net interest on the net defined benefit liability or asset is the change during the period in the net defined benefit liability or asset that arises from the passage of time which is determined by applying the discount rate based on government bonds to the net defined benefit liability or asset. Net interest on the net defined benefit liability or asset is recognized as expense or income in profit or loss.

Remeasurements comprising actuarial gains and losses, return on plan assets and any change in the effect of the asset ceiling (excluding net interest on defined benefit liability) are recognized immediately in other comprehensive income in the period in which they arise. Remeasurements are not reclassified to profit or loss in subsequent periods.

Plan assets are assets that are held by a long-term employee benefit fund or qualifying insurance policies. Plan assets are not available to the creditors of the Company, nor can they be paid directly to the Company. Fair value of plan assets is based on market price information. When no market price is available, the fair value of plan assets is estimated by discounting expected future cash flows using a discount rate that reflects both the risk associated with the plan assets and the maturity or expected disposal date of those assets (or, if they have no maturity, the expected period until the settlement of the related obligations). If the fair value of the plan assets is higher than the present value of the defined benefit obligation, the measurement of the resulting defined benefit asset is limited to the present value of economic benefits available in the form of refunds from the plan or reductions in future contributions to the plan.

The Company's right to be reimbursed of some or all of the expenditure required to settle a defined benefit obligation is recognized as a separate asset at fair value when and only when reimbursement is virtually certain.

Equity

Capital stock is recognized as issued when the stock is paid for or subscribed under a binding subscription agreement and is measured at par value. When the shares are sold at a premium, the difference between the proceeds and the par value is credited to additional paid-in capital account.

Additional paid-in capital includes any premiums received in excess of par value on the issuance of capital stock.

Share issuance costs incurred as necessary part of completing an equity transaction are accounted for as part of that transaction and are treated as a deduction from additional paid-in capital from previous share issuance. If the additional paid-in capital account is not sufficient, the excess is deducted from retained earnings.

Contingency surplus represents contributions of the stockholders to cover any unexpected deficiency in the Margin of Solvency (MOS) as required under the Code and can be withdrawn only upon the approval of the IC.

Retained earnings include all the accumulated earnings of the Company, less any amount of dividends declared.

Revenue Recognition

Revenue is recognized to the extent that it is probable that the economic benefits will flow to the Company and the amount of revenue can be reliably measured. The Company assesses its revenue arrangements against specific criteria in order to determine if it is acting as principal or agent.

The Company has concluded that it is acting as principal in all of its revenue arrangements. The following specific recognition criteria must also be met before revenue is recognized:

Other income

Income from other sources is recognized when earned.

The following revenue accounts are outside the scope of PFRS 15:

Premium Revenue

Gross insurance written premiums comprise the total premiums receivable for the whole period of cover provided by contracts entered into during the accounting period and are recognized on the date

on which the policy incepts. Premiums include any adjustments arising in the accounting period for premiums receivable in respect of business written in prior periods.

Premiums from insurance contracts are recognized as revenue over the period of the contracts using the 24th method. The portion of the premiums written that relate to the unexpired periods of the policies at the end of the reporting period is accounted for as provision for unearned premiums and presented as part of “insurance contract liabilities” in the liabilities section of the statement of financial position. The related reinsurance premiums ceded that pertain to the unexpired periods at reporting date are accounted for as deferred reinsurance premiums shown as part of reinsurance assets presented in the assets section of the statement of financial position. The net changes in these accounts between reporting dates are included in the determination of net insurance revenue.

Reinsurance Commissions

Commissions earned from insurance contracts are recognized as revenue over the period of the contracts using the 24th method for policies with period of more than 12 months. The portion of the commissions that relate to the unexpired periods of the policies at end of the reporting period are accounted for as deferred reinsurance commissions and presented in the liabilities section of the statement of financial position.

Interest income

For all financial instruments measured at amortized cost and interest-bearing financial instruments, interest income is recorded at the effective interest rate, which is the rate that exactly discounts estimated future cash receipts through the expected life of the financial instrument or a shorter period, where appropriate, to the net carrying amount of the financial asset. The calculation takes into account all contractual terms of the financial instrument (for example, prepayment options), includes any fees or incremental costs that are directly attributable to the instrument and are an integral part of the effective interest rate, but not future credit losses. The adjusted carrying amount is calculated based on the original effective interest rate. The change in carrying amount is recorded as interest income.

Once the recorded value of a financial asset or group of similar financial assets has been reduced due to an impairment loss, interest income continues to be recognized using the original effective interest rate applied to the new carrying amount.

Dividend income

Dividend income is recognized when the shareholders’ right to receive the payment is established.

Expenses

Expenses are recognized when there is a decrease in future economic benefit related to a decrease in an asset or an increase in a liability that can be measured reliably. Operating expenses and interest expense, except for lease agreements, are recognized in the statement of income as they are incurred.

Benefits and Claims

Benefits and claims consist of benefits and claims paid to policyholders, which includes changes in the valuation of insurance contract liabilities, including IBNR. The IBNR shall be calculated based on standard actuarial projection techniques or combination of such techniques, such as but not limited to the chain ladder method, the expected loss ratio approach, the Born Huetter - Ferguson method. At each reporting date, prior year claims estimates are reassessed for adequacy and changes made are charged to provision. At each reporting date, prior year claims estimates are reassessed for adequacy and changes made are charged to provision. It further includes internal and external claims handling costs that are directly related to the processing and settlement of claims. Amounts receivable in

respect of salvage and subrogation are also considered. General insurance claims are recorded on the basis of notifications received.

Commission expense

Commissions are recognized as expense over the period of the contracts using the 24th method for policies with a term of exactly one year. The portion of the commissions that relates to the unexpired periods of the policies at reporting date is accounted for as “Deferred Acquisition Cost” and presented in the asset section of the statement of financial position.

General expenses

General expenses are recognized in the statement of income as they are incurred.

Leases

Company as a lessee

The Company applies a single recognition and measurement approach for all leases, except for short-term leases and leases of low value assets. The Company recognizes lease liabilities to make lease payments and right of use assets representing the right to use the underlying assets.

The lessee has the option to elect the short-term lease and/or lease of low-value asset recognition exemptions. A lessee that makes this accounting policy election does not recognize a lease liability or right of use asset on its balance sheet. Instead, the lessee recognizes the lease payment associated with those leases as an expense on either a straight-line basis over the lease term or another systematic basis. The lessee applies another systematic basis if that basis is more representative of the pattern of the lessee’s benefit.

Right-of-use (ROU) assets

The Company recognizes ROU assets at the commencement date of the lease (i.e., the date the underlying asset is available for use). ROU assets are measured at cost, less any accumulated depreciation and impairment losses, and adjusted for any remeasurement of lease liabilities. The cost of right of use assets includes the amount of lease liabilities recognized, initial direct costs incurred, and lease payments made at or before the commencement date less any lease incentives received.

Unless the Company is reasonably certain to obtain ownership of the leased asset at the end of the lease term, the recognized ROU assets are depreciated on a straight-line basis over the shorter of its estimated useful life and the lease term. ROU assets are subject to impairment.

Lease liabilities

At the commencement date of the lease, the Company recognizes lease liabilities measured at the present value of lease payments to be made over the lease term. The lease payments include fixed payments (including in substance fixed payments) less any lease incentives receivable, variable lease payments that depend on an index or a rate, and amounts expected to be paid under residual value guarantees. The lease payments also include the exercise price of a purchase option reasonably certain to be exercised by the Company and payments of penalties for terminating a lease, if the lease term reflects the Company exercising the option to terminate. The variable lease payments that do not depend on an index or a rate are recognized as expense in the period on which the event or condition that triggers the payment occurs. In calculating the present value of lease payments, the Company uses the incremental borrowing rate at the lease commencement date if the interest rate implicit in the lease is not readily determinable. After the commencement date, the amount of lease liabilities is increased to reflect the accretion of interest and reduced for the lease payments made. In addition, the carrying amount of lease liabilities is remeasured if there is a modification, a change in the lease term, a change in the in-substance fixed lease payments or a change in the assessment to purchase the underlying asset.

Short-term leases and leases of low-value assets

The Company applies the short-term lease recognition exemption to its short-term leases of machinery and equipment (i.e., those leases that have a lease term of 12 months or less from the commencement date and do not contain a purchase option). It also applies the leases of low-value assets recognition exemption to leases of office equipment that are considered of low value (i.e., cost of leased assets below ₱0.3 million). Lease payments on short-term leases and leases of low-value assets are recognized as expense on a straight-line basis over the lease term.

Income Tax

Current Tax

Current tax assets and liabilities for the current and prior periods are measured at the amount expected to be recovered from or paid to the taxation authorities. The tax rates and tax laws used to compute the amount are those that are enacted or substantially enacted as at the end of the reporting period.

Deferred Tax

Deferred tax is provided, using the liability method, on all temporary differences, with certain exceptions, at the reporting date between the tax bases of assets and liabilities and their carrying amounts for financial reporting purposes.

Deferred tax liabilities are recognized for all taxable temporary differences, including asset revaluations. Deferred tax assets are recognized for all deductible temporary differences, carryforward of unused tax credits from the excess of minimum corporate income tax (MCIT) over the regular income tax, and unused net operating loss carryover (NOLCO), to the extent that it is probable that sufficient taxable profit will be available against which the deductible temporary differences and carryforward of unused tax credits from MCIT and unused NOLCO can be utilized. Deferred tax, however, is not recognized on temporary differences that arise from the initial recognition of an asset or liability in a transaction that is not a business combination and, at the time of the transaction, affects neither the accounting income nor taxable income or loss.

The carrying amount of deferred tax assets is reviewed at each reporting date and reduced to the extent that it is no longer probable that sufficient taxable profit will be available to allow the deferred tax assets to be utilized. Unrecognized deferred tax assets are reassessed at each reporting date and are recognized to the extent that it has become probable that future taxable profit will allow the deferred tax assets to be recovered.

Deferred tax liabilities are recognized for all taxable temporary differences, except:

- When the deferred tax liability arises from the initial recognition of goodwill or an asset or liability in a transaction that is not a business combination and, at the time of the transaction, affects neither the accounting profit nor taxable profit or loss; and
- In respect of taxable temporary differences associated with investments in subsidiaries, associates and interests in joint ventures, where the timing of the reversal of the temporary differences can be controlled and it is probable that the temporary differences will not reverse in the foreseeable future.

Deferred tax assets and liabilities are measured at the tax rate that is expected to apply to the period when the asset is realized or the liability is settled, based on tax rates and tax laws that have been enacted or substantively enacted as at the end of the reporting period. Movements in the deferred income tax assets and liabilities arising from changes in tax rates are charged against or credited to income for the period. Current tax and deferred tax relating to items recognized as other comprehensive income is also recognized in the statement of other comprehensive income.

Deferred tax assets and liabilities are offset if a legally enforceable right exists to set off current tax assets against current tax liabilities and the deferred income taxes relate to the same taxable entity and the same taxation authority.

Provisions

Provisions are recognized when the Company has a present obligation (legal or constructive) as a result of a past event, it is probable that an outflow of resources embodying economic benefits will be required to settle the obligation, and a reliable estimate can be made of the amount of the obligation. Where the Company expects some or all of a provision to be reimbursed, for example under an insurance contract, the reimbursement is recognized as a separate asset but only when the reimbursement is virtually certain. The expense relating to any provision is presented in the statement of income, net of any reimbursement. If the effect of the time value of money is material, provisions are determined by discounting the expected future cash flows at a pre-tax rate that reflects current market assessments of the time value of money and where appropriate, the risks specific to the liability. Where discounting is used, the increase in the provision due to the passage of time is recognized as a borrowing cost.

Contingencies

Contingent liabilities are not recognized in the financial statements. They are disclosed unless the possibility of an outflow of resources embodying economic benefits is remote. A contingent asset is not recognized in the financial statements but disclosed when an inflow of economic benefit is probable.

Events after the Reporting Period

Any post year-end event that provides additional information about the Company's position at the reporting date (adjusting event) is reflected in the financial statements. Post year-end events that are not adjusting events, if any, are disclosed in the notes to the financial statements, when material.

3. Significant Accounting Judgments and Estimates

The preparation of the financial statements necessitates the use of judgments and estimates. These judgments and estimates affect the reported amounts of assets and liabilities and contingent liabilities at the reporting period date as well as affecting the reported income and expenses for the year. Although the estimates are based on management's best knowledge and judgment of current facts as at the reporting date, the actual outcome may differ from these estimates, possibly significantly.

Future events may occur which will cause the assumptions used in arriving at the estimates to change. The effects of any change in estimates are reflected in the financial statements as they become reasonably determinable.

Judgments and estimates are continually evaluated based on historical experience and other factors, including expectations of future events that are believed to be reasonable under the circumstances.

Judgments

a. Going concern

Notwithstanding the upcoming merger as disclosed in Note 1, the Company's management has made an assessment of its ability to continue as a going concern and is satisfied that it has the resources to continue in business for the foreseeable future. Furthermore, management is not aware of any material uncertainties that may cast significant doubt on the Company's ability to continue as a going concern. Therefore, the financial statements continue to be prepared on the going concern basis.

b. Product classification

The significance of insurance risk is dependent on both the probability of an insured event and the magnitude of its potential effect. As a general guideline, the Company defines significant insurance risk as the possibility of having to pay benefits on the occurrence of an insured event that are at least 5% more than the benefits payable if the insured event did not occur.

The Company has determined that the insurance policies it issues have significant insurance risks and therefore meet the definition of insurance contracts and should be accounted for as such.

c. Determination of lease term of contracts with renewal and termination options – Company as a lessee

The Company has several lease contracts that include extension and termination options. The Company applies judgement in evaluating whether it is reasonably certain whether or not to exercise the option to renew or terminate the lease. That is, it considers all relevant factors that create an economic incentive for it to exercise either the renewal or termination. After the commencement date, the Company reassesses the lease term if there is a significant event or change in circumstances that is within its control and affects its ability to exercise or not to exercise the option to renew or to terminate (e.g., construction of significant leasehold improvements or significant customization to the leased asset).

Estimates

a. Leases - estimating the incremental borrowing rate

The Company cannot readily determine the interest rate implicit in the lease, therefore, it uses its incremental borrowing rate (IBR) to measure lease liabilities. The IBR is the rate of interest that the Company would have to pay to borrow over a similar term, and with a similar security, the funds necessary to obtain an asset of a similar value to the right of use asset in a similar economic environment. The IBR therefore reflects what the Company 'would have to pay', which requires estimation when no observable rates are available (such as for subsidiaries that do not enter into financing transactions) or when they need to be adjusted to reflect the terms and conditions of the lease (for example, when leases are not in the subsidiary's functional currency). The Company estimates the IBR using observable inputs (such as market interest rates) when available and is required to make certain entity-specific estimates (such as the subsidiary's stand-alone credit rating).

The present value of the lease payments is determined using the discount rate representing the rate of interest applicable for currency of the lease contract and for similar tenor, adjusted by credit spread of the Company, observed in the period when the lease contract commences or is modified. Lease liabilities recognized as of December 31, 2025 and 2024 amounted to ₱55.56 million and ₱85.62 million, respectively (see Note 28).

b. Impairment of financial assets

The Company uses a provision matrix to calculate ECLs for financial assets for insurance receivables and loans and receivables. The provision matrix is initially based on the Company's historical observed default rates.

For debt investments classified and measured at amortized cost and FVOCI, the Company uses the available historical default rate based on the credit rating of the specific investments. The Company will adjust the historical default rates with forward-looking information, if any. For instance, if forecast economic conditions (i.e., inflation and gross domestic product) are expected to deteriorate over the next year which can lead to an increased number of defaults in the industry, the historical default rates are adjusted. At every reporting date, the historical default rates are updated and changes in the forward-looking estimates are analyzed.

The assessment of the correlation between historical default rates, forecast economic conditions and ECLs is a significant estimate. The amount of ECLs is sensitive to changes in circumstances and of forecast economic conditions. The Company's historical credit loss experience and forecast of economic conditions may also not be representative of customer's actual default in the future.

Allowance for expected credit losses for insurance receivables amounted to ₱18.87 million and ₱30.71 million as of December 31, 2025 and 2024, respectively (see Note 5).

Allowance for impairment losses for investments in financial assets at amortized cost amounted to ₱0.44 million and ₱0.40 million as of December 31, 2025 and 2024, respectively (see Note 6).

Allowance for expected credit losses for loans and receivables amounted to ₱57.34 million as of December 31, 2025 and 2024 (see Note 7).

c. Evaluation of impairment of property and equipment, right of use assets, and other assets

The Company assesses the impairment of its non-financial assets whenever events or changes in circumstances indicate that the carrying amount of the asset may not be recoverable.

The factors that the Company considers important which could trigger an impairment review include the following:

- significant underperformance relative to expected historical or projected future operating results;
- significant changes in the manner of use of the assets; and
- significant negative industry or economic trends.

As of December 31, 2025 and 2024, the Company has recognized allowance for impairment losses amounting to ₱95.19 million on its creditable withholding taxes (see Note 13).

d. Claims liability arising from insurance contracts

For nonlife insurance contracts, estimates have to be made both for the expected ultimate cost of claims reported at reporting date and for the expected ultimate cost of the IBNR claims at the reporting date. It can take a significant period of time before the ultimate claim costs can be established with certainty and for some type of policies, IBNR claims form the majority of the statement of financial position claims provision. The IBNR provision of the Company has been calculated using standard actuarial projection techniques using past development patterns to determine the expected future development and project the claim amounts for each accident year to its ultimate value. A number of different valuation methodologies have been adopted, each with their own strengths and blended them together which include: (a) paid chain ladder method (with and without Bornhuetter-Ferguson (BF) adjustments); (b) reported chain ladder method (with and without BF adjustments); and (c) expected loss ratio method. At each reporting date, prior year claims estimates are reassessed for adequacy and changes made are charged to provision.

The main assumptions underlying the estimation of the claims provision is that a Company's past claims development experience can be used to project future claims development and hence, ultimate claims costs. Historical claims development is mainly analyzed by accident years, as well as by significant business lines and claim types. Large claims are usually separately addressed, either by being reserved at the face value of loss adjustor estimates or separately projected in order to reflect their future development. In most cases, no explicit assumptions are

made regarding future rates of claims inflation or loss ratios. Instead, the assumptions used are those implicit in the historic claims development data on which the projections are based.

For motor claims, amount of claim cost for total loss recognized in statement of income is net of any salvage recoveries. Salvage recoveries is estimated using historical disposal value of units recovered.

For motor claims, amount of claim cost for total loss recognized in statement of income is net of any salvage recoveries. Salvage recoveries is estimated using historical disposal value of units recovered.

The carrying value of provision for outstanding claims and IBNR amounted to ₱2.23 billion and ₱2.22 billion as of December 31, 2025 and 2024, respectively (see Note 14).

e. Fair values of financial assets

The Company carries certain financial assets at fair value, which requires extensive use of accounting estimates and judgments. Fair value determinations for financial assets and liabilities are based generally on listed or quoted market prices. If prices are not readily determinable or if liquidating the positions is reasonably expected to affect market prices, fair value is based on either internal valuation models or management's estimate of amounts that could be realized under current market conditions, assuming an orderly liquidation over a reasonable period of time.

While significant components of fair value measurement were determined using verifiable objective evidence (i.e., foreign exchange rates, interest rates, volatility rates), the amount of changes in fair value of these financial assets and liabilities would affect profit or loss and equity.

As of December 31, 2025 and 2024, the total fair value of financial assets at FVTPL and FVOCI amounted to ₱1.32 billion and ₱1.22 billion, respectively (see Note 6).

f. Pension liability

The determination of pension obligation and other employee benefits is dependent on the selection of certain assumptions used in calculating such amounts. Those assumptions include, among others, discount rates, future salary increase rates, mortality rates, and future pension increases. Due to the long-term nature of these plans, such estimates are subject to significant uncertainty.

The assumed discount rates were determined using the market yields on Philippine government bonds with terms consistent with the expected employee benefit payout as of reporting date. Refer to Note 23 for the details of assumptions used in the calculation.

In accordance with PAS 19, actual results that differ from the Company's assumptions are recognized immediately under other comprehensive income in the statements of comprehensive income. While the Company believes that the assumptions are reasonable and appropriate, significant differences in the actual experience or significant changes in the assumptions may materially affect the pension obligation.

The Company's net pension obligation amounted to ₱57.03 million and ₱38.59 million as of December 31, 2025 and 2024, respectively (see Note 23).

g. Recognition of deferred tax assets

Deferred tax assets are recognized for all temporary differences to the extent that it is probable that future taxable profit will be available against which the deductible temporary differences can be utilized. Significant management judgment is required to determine the amount of deferred tax assets that can be recognized, based upon the likely timing and level of future taxable income together with future tax planning strategies.

The deferred tax assets recognized as of December 31, 2025 and 2024 amounted to ₱141.45 million and ₱126.12 million, respectively (see Note 24).

h. Estimation of useful lives of property and equipment

The Company reviews annually the estimated useful lives of property and equipment based on expected asset utilization. It is possible that future results of operations could be materially affected by changes in these estimates. A reduction in the estimated useful lives of property and equipment would increase recorded depreciation and amortization expense and decrease the related asset accounts.

4. Cash and Cash Equivalents and Short-term Investments

Cash and Cash Equivalents

This account consists of:

	2025	2024
Cash on hand	₱100,800	₱105,800
Cash in banks	296,131,777	1,202,680,619
Cash equivalents	1,805,630,679	1,689,351,596
	2,101,863,256	2,892,138,015
Less: Allowance for expected credit losses	(56,390)	(26,040)
	₱2,101,806,866	₱2,892,111,975

Cash on hand pertains to administrative petty cash and revolving fund used for payment of operating expenses.

Cash in banks earns interest at the respective bank's deposit rates. It earned interest ranging from 0.06% to 0.10% and 0.06% to 0.10% in 2025 and 2024, respectively.

Cash equivalents are made for varying periods of up to three months depending on the immediate cash requirements of the Company and earned interest ranging from 1.25% to 5.50% and 1.50% to 6.00% in 2025 and 2024, respectively.

Short-term Investments

Short-term investments pertain to time deposits with terms of more than 90 days but less than 360 days and earned interest at 3.25%-5.88% in 2025. As of December 31, 2025 short term investments amounted to 1.42 million.

Interest income earned from cash and cash equivalents and short-term investments amounted to ₱74.21 million and ₱86.51 million in 2025 and 2024, respectively (see Note 19). Interest accrued on cash and cash equivalents and short-term investments amounted to ₱0.36 million and ₱14.09 million as of December 31, 2025 and 2024, respectively (see Note 9).

5. Insurance Receivables

This account consists of:

	2025	2024
Due from:		
Brokers and agents	P1,992,326,669	P1,455,677,239
Ceding companies and reinsurers	76,950,105	97,889,984
Reinsurance recoverable on paid losses	427,092,941	745,864,960
	2,496,369,715	2,299,432,183
Less: Allowance for expected credit losses	(18,871,584)	(30,711,379)
	P2,477,498,131	P2,268,720,804

Amounts due from brokers and agents are premiums collected by the brokers and agents from policyholders. Amounts due from ceding companies are premium-related balances due from insurance companies seeking reinsurance from the Company while amounts due from the reinsurers represent receivables from reinsurance companies for their share of insurance-related recoverable amounts under existing reinsurance agreements. Reinsurance recoverable on paid losses pertains to recoveries of the Company from facultative and treaty reinsurers for policies where claims payments to the insured were already made.

The following table shows aging information of insurance receivables balances:

	2025					Total
	1 to 90 days	91 to 120 days	121 to 150 days	151 to 180 days	More than 180 days	
Due from brokers and agents	P1,386,640,505	P117,307,271	P36,592,910	P44,858,225	P406,927,758	P1,992,326,669
Due from ceding companies and reinsurers	9,816,482	872,802	4,585,911	980,865	60,694,045	76,950,105
Reinsurance recoverable on paid losses	37,053,252	2,321,137	1,219,230	6,490,782	380,008,540	427,092,941
	P1,433,510,239	P120,501,210	P42,398,051	P52,329,872	P847,630,343	P2,496,369,715

	2024					Total
	1 to 90 days	91 to 120 days	121 to 150 days	151 to 180 days	More than 180 days	
Due from brokers and agents	P918,487,679	P112,510,079	P40,980,013	P28,135,015	P355,564,453	P1,455,677,239
Due from ceding companies and reinsurers	28,340,628	4,495,007	4,736,330	3,253,849	57,064,170	97,889,984
Reinsurance recoverable on paid losses	189,795,422	2,041,029	36,102,650	16,948,748	500,977,111	745,864,960
	P1,136,623,729	P119,046,115	P81,818,993	P48,337,612	P913,605,734	P2,299,432,183

As of December 31, 2025 and 2024, allowance for expected credit losses on insurance receivables follows:

	2025			Total
	Due from brokers and agents	Due from ceding companies and reinsurers	Reinsurance recoverable on paid losses	
Balance at beginning of year	P29,345,070	P520,640	P845,669	P30,711,379

Reversal of expected credit losses during the year (Note 21)	(11,839,795)	–	–	(11,839,795)
Balance at end of year	₱17,505,275	₱520,640	₱845,669	₱18,871,584

	2024			
	Due from brokers and agents	Due from ceding companies and reinsurers	Reinsurance recoverable on paid losses	Total
Balance at beginning of year	₱29,669,079	₱520,640	₱845,669	₱31,035,388
Reversal of expected credit losses during the year (Note 21)	(324,009)	–	–	(324,009)
Balance at end of year	₱29,345,070	₱520,640	₱845,669	₱30,711,379

6. Financial Assets

The Company's financial assets are summarized by measurement categories as follows:

	2025	2024
Financial assets at FVOCI	₱1,232,733,582	₱978,914,565
Financial assets at amortized cost	435,246,636	461,718,439
Financial assets at FVTPL	83,878,519	240,809,525
	₱1,751,858,737	₱1,681,442,529

As of December 31, 2025 and 2024, investments in securities included in each of the categories above are detailed as follows:

(a) Financial assets at fair value through OCI

All of Company's financial assets at FVOCI are invested in government debt securities (treasury bonds/bills).

The movements in financial assets at FVOCI follows:

	2025	2024
At January 1	₱978,914,565	₱971,993,163
Additions	458,858,799	283,950,263
Disposals/maturities/redemptions	(204,012,544)	(270,121,556)
Fair value (losses) gains recognized in OCI	(1,027,238)	(6,907,305)
	₱1,232,733,582	₱978,914,565

Amortized cost of financial assets at FVOCI amounted to ₱1,232.22 million and ₱977.80 million in 2025 and 2024, respectively. The rollforward of the net unrealized (loss) gain on financial assets at FVOCI is shown below:

	2025	2024
Balance at beginning of the year	(₱1,113,998)	₱11,939,817
Fair value (losses) gains recognized in OCI	(₱1,027,238)	(6,907,305)
Adjustment	–	(9,988,382)
Loss on sale transferred to profit or loss: (Note 19)	1,628,924	3,841,872
Balance at end of year	(₱512,312)	(₱1,113,998)

The loss on sale of financial assets at FVOCI for the period ended December 31, 2025 amounted to ₱1.62 million (see Note 19).

The costs of investment securities at amortized cost for financial assets at fair value through OCI and financial assets at amortized cost are as follows:

Financial Assets at FVOCI	2025	2024
Debt securities		
Government treasury bonds/bills	₱1,233,245,894	₱980,028,563

(b) *Financial assets at amortized cost*

	2025	2024
Government debt securities	₱414,385,132	₱437,173,738
Corporate debt securities	21,300,000	24,940,000
	435,685,132	462,113,738
Less: allowance for expected credit losses	(438,496)	(395,299)
	₱435,246,636	₱461,718,439

The movements in financial assets at amortized cost before impairment follows:

	2025	2024
At January 1	₱462,113,738	₱517,601,456
Additions	–	3,807,215
Maturities	(25,481,009)	(58,161,663)
Amortization of premium	(947,597)	(1,133,270)
	₱435,685,132	₱462,113,738

The costs of investment securities at amortized cost for financial assets at amortized cost are as follows:

Financial Assets at Amortized Cost	2025	2024
Debt securities		
Government treasury bonds/bills	₱414,385,132	₱437,173,738
Corporate bonds	21,300,000	24,940,000
	₱435,685,132	₱462,113,738

As of December 31, 2025 and 2024, allowance for expected credit losses on financial assets at amortized cost follows:

	2025	2024
Balance at beginning of year	₱395,299	₱608,361
Provision (reversal of provision) for expected credit losses during the year (Note 21)	43,197	(213,062)
Balance at end of year	₱438,496	₱395,299

Interest income earned from financial assets at FVOCI and amortized cost amounted to ₱99.20 million and ₱92.57 million in 2025 and 2024, respectively (see Note 19). Interest accrued

from financial assets at FVOCI and amortized cost amounted to ₱21.62 million and ₱18.72 million as of December 31, 2025 and 2024, respectively (see Note 9).

(c) *Financial assets at FVTPL*

	2025	2024
Club shares	₱60,300,000	₱59,300,000
Unit investment trust fund	20,642,991	9,374,660
Listed common shares	2,915,528	172,114,865
Unlisted shares	20,000	20,000
	₱83,878,519	₱240,809,525

The movements in financial assets at FVTPL follows:

	2025	2024
At January 1	₱240,809,525	₱340,846,178
Additions	401,374,393	316,246,141
Disposals	(602,247,369)	(422,077,111)
Fair value gain on financial assets at FVTPL (Note 19)	43,941,970	5,794,317
At December 31	₱83,878,519	₱240,809,525

Dividend income from financial assets at FVTPL amounted to ₱4.48 million and ₱5.91 million in 2025 and 2024, respectively (see Note 19).

The fair value gain on sale of financial asset at FVTPL for the period ended December 31, 2025 amounted to ₱9.05 million (see Note 19).

7. Loans and Receivables

This account consists of:

	2025	2024
Accounts receivable	₱170,860,878	₱188,089,581
Employee receivables	22,400,131	15,001,125
	193,261,009	203,090,706
Less: allowance for expected credit losses	57,342,795	(57,342,795)
	₱135,918,214	₱145,747,911

Accounts receivable include a receivable from Mercator Holdings and Management Corporation amounting to ₱147.30 million as of December 31, 2025 and 2024 arising from sale of investment properties in prior years.

The following table shows aging information of loans and receivables:

	2025					Total
	1 to 30 days	31 to 60 days	61 to 120 days	121 to 180 days	> 180 days	
Accounts receivable	₱1,886,130	₱2,119,000	₱9,329,120	₱70,000	₱157,456,628	₱170,860,878
Employee receivables	7,908,480	231,711	407,583	221,117	13,631,240	22,400,131
	₱9,794,610	₱2,350,711	₱9,736,703	₱291,117	₱171,087,868	₱193,261,009

	2024					Total
	1 to 30 days	31 to 60 days	61 to 120 days	121 to 180 days	> 180 days	
Accounts receivable	₱104,638	₱73,000	₱29,164,359	₱393,155	₱158,354,429	₱188,089,581
Employee receivables	1,596,958	1,017,988	1,273,358	2,510,090	8,602,731	15,001,125
	₱1,701,596	₱1,090,988	₱30,437,717	₱2,903,245	₱166,957,160	₱203,090,706

Allowance for expected credit losses on accounts receivable as of December 31, 2025 and 2024 amounted to ₱57.34 million.

8. Reinsurance Assets

This account consists of:

	2025	2024
Reinsurance recoverable on unpaid losses (Note 14)	₱1,370,019,617	₱1,531,018,615
Deferred reinsurance premiums (Note 14)	2,057,333,912	2,136,727,725
	₱3,427,353,529	₱3,667,746,340

Reinsurance recoverable on unpaid losses pertains to recoveries of the Company from reinsurers for policies where claims have been incurred but not yet paid.

Deferred reinsurance premiums are reinsurance premiums ceded that pertain to the unexpired periods as at reporting date.

9. Accrued Interest Income

This account consists of:

	2025	2024
Accrued interest income from:		
Financial assets at FVOCI (Note 6)	₱17,708,133	₱14,378,890
Financial assets at amortized cost (Note 6)	3,910,350	4,337,491
Cash and cash equivalents and short-term investments (Note 4)	364,610	14,089,084
	₱21,983,093	₱32,805,465

10. Deferred Acquisition Costs and Deferred Reinsurance Commissions

Deferred Acquisition Costs

The rollforward analysis of this account follows:

	2025	2024
At January 1	₱413,089,830	₱404,404,104
Costs deferred during the year	538,705,726	803,680,790
Commission Expense	(597,778,089)	(794,995,064)
At December 31	₱354,017,467	₱413,089,830

Deferred acquisition costs pertain to the portion of the commission expense that relates to the unexpired periods of policies as at reporting date.

Deferred Reinsurance Commissions

The rollforward analysis of this account follows:

	2025	2024
At January 1	₱147,725,489	₱135,591,528
Income deferred during the year	369,950,855	383,572,819
Commission Income	(380,742,216)	(371,438,858)
At December 31	₱136,934,128	₱147,725,489

Deferred reinsurance commissions pertain to the portion of commission income that relates to the unexpired periods of the policies as at reporting date.

11. Investment Properties

This account consists of real estate properties foreclosed from former insurance agents of the Company located in Bulacan. The fair values of the properties were estimated using the Sales Comparison Approach. This is a comparative approach that considers the sales of similar or substitute properties and related market data and establishes a value estimate by processes involving comparison. Listings and offerings may also be considered.

As of December 31, 2025 and 2024, the estimated fair value of the remaining property in Bulacan amounted to ₱8.16 million. The valuation was performed by an independent appraiser on April 25, 2025. Description of the valuation technique used and key inputs to the last valuation on investment properties follows:

Location	Valuation techniques	Quoted prices in active markets	Range (weighted average)
San Miguel, Bulacan	Sales Comparison Approach	Estimated Computed Value per sqm	₱450 to ₱550 (₱450)
		Net price (₱/sq. m)	₱450 to ₱495
		Internal factor	
		Location	-10% to -5%
		Size	2% to 10%
		Algebraic sum of internal factor	0% to -5%

As of December 31, 2025 and 2024, the carrying value of investment property amounted to ₱2,745.

12. Property and Equipment – net

The roll forward analysis of this account is as follows:

	2025				
	Computer Equipment	Leasehold Improvements	Transportation Equipment	Office Furniture, Fixtures and Equipment	Total
Cost					
At January 1, 2025	₱102,091,041	₱10,018,915	₱47,736,420	₱3,221,816	₱163,068,192
Additions	12,461,870	170,615	14,406,508	1,757,075	28,796,068
Disposals	–	–	(5,242,225)	–	(5,242,225)
Retirement	(78,783,497)	(3,562,799)	(8,391,548)	(1,319,195)	(92,057,039)
At December 31, 2025	35,769,414	6,626,731	48,509,155	3,659,696	94,564,996
Accumulated depreciation					
At January 1, 2025	86,963,085	6,444,434	24,752,153	1,949,949	120,109,621
Depreciation during the year (Note 21)	6,104,547	2,204,618	8,665,724	1,037,541	18,012,430
Disposals	–	–	(3,024,042)	–	(3,024,042)
Retirement	(78,783,497)	(3,562,799)	(8,391,548)	(1,319,195)	(92,057,039)
At December 31, 2025	14,284,135	5,086,253	22,002,287	1,668,295	43,040,970
Net book value as of December 31, 2025	₱21,485,279	₱1,540,478	₱26,506,868	₱1,991,401	₱51,524,026
	2024				
	Computer Equipment	Leasehold Improvements	Transportation Equipment	Office Furniture, Fixtures and Equipment	Total
Cost					
At January 1, 2024	₱94,112,996	₱9,382,986	₱40,979,325	₱2,335,106	₱146,810,413
Additions	7,978,045	635,929	9,036,470	886,710	18,537,154
Retirement	–	–	(2,279,375)	–	(2,279,375)
At December 31, 2024	102,091,041	10,018,915	47,736,420	3,221,816	163,068,192
Accumulated depreciation					
At January 1, 2024	81,608,177	4,248,313	18,550,311	1,445,421	105,852,222
Depreciation during the year (Note 21)	5,354,908	2,196,121	8,481,217	504,528	16,536,774
Retirement	–	–	(2,279,375)	–	(2,279,375)
At December 31, 2024	86,963,085	6,444,434	24,752,153	1,949,949	120,109,621
Net book value as of December 31, 2024	₱15,127,956	₱3,574,481	₱22,984,266	₱1,271,867	₱42,958,570

The cost of fully depreciated property and equipment still in use amounted to ₱12.63 million and ₱82.35 million as of December 31, 2025 and 2024, respectively. During the year, the Company disposed certain transportation equipment amounting to ₱5.24 million, resulting to 0.89 million gain recognized under Other Income.

13. Other Assets

This account consists of:

	2025	2024
Creditable withholding tax	₱633,051,200	₱586,403,626
Prepaid expenses	27,900,638	14,419,492
Security deposits	21,721,870	22,060,223
Salvage recoveries	15,360,387	29,060,716
Security fund	55,160	55,160
Other assets	–	54,452,064
	698,089,255	706,451,281
Less: Allowance for impairment losses	(95,185,476)	(95,185,476)
	₱602,903,779	₱611,265,805

Creditable withholding taxes pertain to the Company's taxes withheld at source by its customers and is creditable against future income tax liability of the Company.

Prepaid expenses pertain to office supplies, rental advances, insurance of employees, and membership and association dues.

Security deposits are payments made by the Company in its leases of building and parking space which are refundable at the end of the lease contract.

Salvage recoveries pertain to vehicles recovered from total loss motor claims. These vehicles are in the possession of the Company and are held for sale.

Security fund pertains to investment/placement deposited to the IC as requirement under the Insurance Code.

Based on management's assessment, the Company's creditable withholding taxes that were previously applied for refund from the BIR amounting to ₱95.19 million as of December 31, 2025 and 2024 are considered impaired. No additional impairment was recognized in 2025 and 2024.

14. Insurance Contract Liabilities and Reinsurance Assets

Insurance contract liabilities may be analyzed as follows:

	2025			2024		
	Insurance Contract Liabilities	Reinsurers' Share of Liabilities (Note 8)	Net 2025	Insurance Contract Liabilities	Reinsurers' Share of Liabilities (Note 8)	Net 2024
Provision for claims reported and loss adjustment Expenses	₱1,727,134,385	₱1,049,854,160	₱677,280,225	₱1,686,092,747	₱1,171,115,157	₱514,977,590
Provision for IBNR	502,974,688	320,165,457	182,809,231	538,601,896	359,903,458	178,698,438
Total claims reported and IBNR	2,230,109,073	1,370,019,617	860,089,456	2,224,694,643	1,531,018,615	693,676,028
Provision for unearned premiums	3,151,168,092	2,057,333,912	1,093,834,180	3,309,353,145	2,136,727,725	1,172,625,420
Total Insurance Contract Liabilities	₱5,381,277,165	₱3,427,353,529	₱1,953,923,636	₱5,534,047,788	₱3,667,746,340	₱1,866,301,448

Provisions for claims reported by policyholders and IBNR may be analyzed as follows:

	2025			2024		
	Insurance Contract Liabilities	Reinsurers' Share of Liabilities (Note 8)	Net 2025	Insurance Contract Liabilities	Reinsurers' Share of Liabilities (Note 8)	Net 2024
At January 1	₱2,224,694,645	₱1,531,018,614	₱693,676,031	₱1,963,659,680	₱1,191,732,322	₱771,927,358
Claims incurred during the year	1,743,174,875	490,276,675	1,252,898,200	1,920,222,767	1,060,191,575	860,031,194
Increase (decrease) in IBNR (Note 20)	(35,627,208)	(39,738,001)	4,110,793	10,980,968	33,390,308	(22,409,340)
Claims paid during the year (Note 20)	(1,702,133,239)	(611,537,671)	(1,090,595,568)	(1,670,168,772)	(754,295,590)	(915,873,182)
At December 31	₱2,230,109,073	₱1,370,019,617	₱860,089,456	₱2,224,694,643	₱1,531,018,615	₱693,676,030

Provisions for unearned premiums may be analyzed as follows:

	2025			2024		
	Insurance Contract Liabilities	Reinsurers' Share of Liabilities (Note 8)	Net 2025	Insurance Contract Liabilities	Reinsurers' Share of Liabilities (Note 8)	Net 2024

At January 1	₱3,309,353,143	₱2,136,727,726	₱1,172,625,417	₱2,332,641,901	₱1,268,873,933	₱1,063,767,968
New policies written during the year (Note 18)	5,897,876,013	3,847,872,316	2,050,003,697	6,795,311,740	5,046,513,793	1,748,797,947
Premiums earned during the year (Note 18)	(6,056,061,064)	(3,927,266,130)	(2,128,794,934)	(5,818,600,496)	(4,178,660,001)	(1,639,940,495)
At December 31	₱3,151,168,092	₱2,057,333,912	₱1,093,834,180	₱3,309,353,145	₱2,136,727,725	₱1,172,625,420

Terms and Conditions

The major classes of general insurance written by the Company include motor, property, casualty, marine and engineering. Risks under these policies usually cover a 12-month duration.

For general insurance contracts, claims provisions (comprising provisions for claims reported by policyholders and IBNR claims) are established to cover the ultimate cost of settling the liabilities in respect of claims that have occurred and are estimated based on known facts at the reporting date.

The provisions are refined quarterly as part of a regular ongoing process as claims experience develops, certain claims are settled, and further claims are reported. Outstanding claims provisions are not discounted for the time value of money.

The measurement process primarily includes projections of future claims through use of historical experience statistics. In certain cases, where there is a lack of reliable historical data on which to estimate claims development, relevant benchmarks of similar business are used in developing claims estimates. Claims provisions are separately analyzed by class of business. In addition, claims are usually assessed by loss adjusters.

In insurance, as a rule, there may be claims filed in the current year that would attach policies issued in the previous years. This in effect makes claims provision highly sensitive. Other unpredictable circumstances, like legislative uncertainties, make it impossible to quantify claims. Also, due to delays arising between occurrence of claims and their subsequent reporting to and settlement by the Company, the outstanding claim provisions cannot be ascertained with confidence at the end of the reporting period. Consequently, the ultimate liabilities will vary as a result of subsequent developments.

Differences resulting from reassessment of the ultimate liabilities are recognized in subsequent years' financial statements.

Assumptions

The principal assumption underlying the estimates is the Company's past claims developments experience. This includes assumptions in respect of average claim costs and claim numbers for each accident year. Judgment is used to assess the extent to which external factors such as judicial decisions and government legislation affect the estimates.

Sensitivities

The table below shows the impact of changes in certain important assumptions in general insurance business. The interrelation of these assumptions will have an important impact in the computation of the final liabilities.

	2025			
	Change in Assumption	Impact on insurance contract liabilities - net of reinsurance assets	Impact on profit before tax	Impact on equity
Average claim costs	1.87%	864,101,496	(864,101,496)	(648,076,122)
Average number of claims	2.41%	1,053,544,812	(1,053,544,812)	(790,158,609)

	2024			
	Change in Assumption	Impact on insurance contract liabilities - net of reinsurance assets	Impact on profit before tax	Impact on equity
Average claim costs	4.73%	810,129,211	(810,129,211)	(607,596,908)
Average number of claims	1.55%	934,611,022	(934,611,022)	(700,958,266)

Loss Development Triangle

The tables that follow present the development of the estimated ultimate claims costs on a gross and net reinsurance basis. The tables show the cumulative amounts of the estimated ultimate claims costs during successive years related to each accident year. The increase from the original estimate is due to the combination of a number of factors, including claims being settled for larger amounts than originally expected. The original estimate will also increase or decrease, as more information becomes known about the individual claims and overall claim frequency and severity.

2025

Accident Year	2015 And prior	2016	2017	2018	2019	2020	2021	2022	2023	2024	2025	Total
Estimate of ultimate claims costs:												
At the end of accident year	₱13,752,444,756	₱1,072,674,346	₱1,830,487,601	₱2,312,703,114	₱2,286,209,308	₱2,106,668,062	₱2,045,108,025	₱1,844,007,638	₱1,513,205,660	₱2,631,181,494	₱2,327,226,221	₱2,327,226,221
One year later	13,874,179,982	1,397,491,163	1,970,932,199	4,076,327,995	2,278,100,400	1,571,101,654	1,672,421,727	1,107,392,216	1,073,865,102	2,230,914,306	-	2,230,914,306
Two years later	13,464,801,028	1,390,885,152	2,373,270,997	3,814,872,607	2,435,169,328	1,388,332,921	1,541,711,606	1,104,015,833	1,026,450,086	-	-	1,026,450,086
Three years later	13,125,863,300	1,429,131,852	2,305,061,182	3,632,586,048	2,383,586,188	1,401,108,699	1,525,976,671	1,081,991,281	-	-	-	1,081,991,281
Four years later	13,086,097,305	1,470,479,734	2,312,348,987	3,627,268,921	2,179,603,767	1,353,263,936	1,516,200,332	-	-	-	-	1,516,200,332
Five years later	13,066,514,722	1,487,405,364	2,312,835,489	3,620,304,282	1,982,624,344	1,342,351,900	-	-	-	-	-	1,342,351,900
Six years later	13,058,437,363	1,486,992,446	2,312,155,129	3,617,846,573	1,969,529,454	-	-	-	-	-	-	1,969,529,454
Seven years later	13,066,494,554	1,477,171,120	2,313,722,914	3,620,217,878	-	-	-	-	-	-	-	3,620,217,878
Eight years later	13,064,116,335	1,477,651,436	2,314,915,826	-	-	-	-	-	-	-	-	2,314,915,826
Nine years later	13,053,802,793	1,476,601,541	-	-	-	-	-	-	-	-	-	1,476,601,541
Ten years later	13,044,153,439	-	-	-	-	-	-	-	-	-	-	13,044,153,439
Current estimate of cumulative claims	13,044,153,439	1,476,601,541	2,314,915,826	3,620,217,878	1,969,529,454	1,342,351,900	1,516,200,332	1,081,991,281	1,026,450,086	2,230,914,306	2,327,226,221	31,950,552,264
Cumulative payments to date	(13,033,899,565)	(1,474,700,611)	(2,307,124,274)	(3,615,941,417)	(1,960,606,658)	(1,299,955,946)	(1,462,139,759)	(1,009,567,917)	(937,827,118)	(1,843,976,949)	(774,702,977)	(29,720,443,191)
Total gross insurance liabilities included in the statement of financial position	₱10,253,874	₱1,900,929	₱7,791,552	₱4,276,460	₱8,922,798	₱42,395,953	₱54,060,573	₱72,423,364	₱88,622,968	₱386,937,357	₱1,552,523,245	₱2,230,109,073

Accident Year	2015 And prior	2016	2017	2018	2019	2020	2021	2022	2023	2024	2025	Total
Estimate of ultimate claims costs:												
At the end of accident year	₱10,839,821,223	₱942,741,897	₱1,076,670,806	₱1,516,585,974	₱1,389,380,613	₱1,311,731,064	₱1,186,806,315	₱816,908,049	₱916,977,994	₱1,018,907,493	₱1,310,541,276	₱1,310,541,276
One year later	7,034,198,013	1,111,305,378	826,645,841	1,577,833,019	1,266,626,502	965,145,706	712,504,577	689,182,531	756,075,137	1,092,134,919	-	1,092,134,919
Two years later	6,921,525,468	1,122,402,975	833,297,968	1,593,076,903	1,223,144,926	908,189,193	751,343,804	692,091,933	744,235,741	-	-	744,235,741
Three years later	6,924,401,991	1,123,877,598	832,443,405	1,567,864,060	1,172,432,324	909,146,549	745,466,961	690,241,821	-	-	-	690,241,821
Four years later	6,917,459,582	1,127,693,748	836,115,710	1,567,777,279	1,162,980,224	908,088,782	740,722,872	-	-	-	-	740,722,872
Five years later	6,908,550,300	1,128,112,323	837,407,284	1,566,049,664	1,148,121,617	900,552,572	-	-	-	-	-	900,552,572
Six years later	6,918,685,265	1,127,753,391	836,207,279	1,562,871,721	1,142,484,763	-	-	-	-	-	-	1,142,484,763
Seven years later	6,917,046,935	1,127,941,243	837,774,420	1,563,290,180	-	-	-	-	-	-	-	1,563,290,180
Eight years later	6,918,247,093	1,128,062,023	837,648,681	-	-	-	-	-	-	-	-	837,648,681
Nine years later	6,908,481,229	1,126,620,913	-	-	-	-	-	-	-	-	-	1,126,620,913
Ten years later	6,902,352,306	-	-	-	-	-	-	-	-	-	-	6,902,352,306
Current estimate of cumulative claims	6,902,352,306	1,126,620,913	837,648,681	1,563,290,180	1,142,484,763	900,552,572	740,722,872	690,241,821	744,235,741	1,092,134,919	1,310,541,276	17,050,826,044
Cumulative payments to date	(6,900,387,177)	(1,126,516,215)	(835,384,876)	(1,560,392,820)	(1,138,296,272)	(894,764,376)	(714,988,852)	(661,804,632)	(704,111,931)	(1,002,494,124)	(651,595,313)	(16,190,736,588)
Total gross insurance liabilities included in the statement of financial position	₱1,965,129	₱104,698	₱2,263,805	₱2,897,360	₱4,188,491	₱5,788,196	₱25,734,020	₱28,437,189	₱40,123,810	₱89,640,795	₱658,945,963	₱860,089,456

2024	2014 and prior	2015	2016	2017	2018	2019	2020	2021	2022	2023	2024	Total
Accident Year												
Estimate of ultimate claims costs:												
At the end of accident year	₱12,687,910,601	₱1,064,534,155	₱1,072,674,346	₱1,830,487,601	₱2,312,703,114	₱2,286,209,308	₱2,106,668,062	₱2,045,108,025	₱1,844,007,638	₱1,513,205,660	₱2,631,181,493	₱2,631,181,493
One year later	12,711,853,883	1,162,326,099	1,397,491,163	1,970,932,199	4,076,327,995	2,278,100,400	1,571,101,654	1,672,421,727	1,107,392,216	1,073,865,102	-	1,073,865,102
Two years later	12,315,965,679	1,148,835,349	1,390,885,152	2,373,270,997	3,814,872,607	2,435,169,328	1,388,332,921	1,541,711,606	1,104,015,833	-	-	1,104,015,833
Three years later	11,990,700,780	1,135,162,520	1,429,131,852	2,305,061,182	3,632,586,048	2,383,586,188	1,401,108,699	1,525,976,671	-	-	-	1,525,976,671
Four years later	11,943,840,768	1,142,256,537	1,470,479,734	2,312,348,987	3,627,268,921	2,179,603,767	1,353,263,936	-	-	-	-	1,353,263,936
Five years later	11,944,225,018	1,122,289,704	1,487,405,364	2,312,835,489	3,620,304,282	1,982,624,344	-	-	-	-	-	1,982,624,344
Six years later	11,928,536,463	1,129,900,900	1,486,992,446	2,312,155,129	3,617,846,573	-	-	-	-	-	-	3,617,846,573
Seven years later	11,933,326,976	1,133,167,578	1,477,171,120	2,313,722,914	-	-	-	-	-	-	-	2,313,722,914
Eight years later	11,930,880,796	1,133,235,539	1,477,651,436	-	-	-	-	-	-	-	-	1,477,651,436
Nine years later	11,916,951,959	1,136,850,834	-	-	-	-	-	-	-	-	-	1,136,850,834
Ten years later	11,914,544,106	-	-	-	-	-	-	-	-	-	-	11,914,544,106
Current estimate of cumulative claims	11,914,544,106	1,136,850,834	1,477,651,436	2,313,722,914	3,617,846,573	1,982,624,344	1,353,263,936	1,525,976,671	1,104,015,833	1,073,865,102	2,631,181,493	30,131,543,242
Cumulative payments to date	(11,904,201,961)	(1,128,879,421)	(1,474,194,436)	(2,305,526,427)	(3,613,994,599)	(1,942,344,404)	(1,297,579,507)	(1,445,719,457)	(993,806,179)	(880,132,579)	(920,469,629)	(27,906,848,599)
Total gross insurance liabilities included in the statement of financial position	₱10,342,145	₱7,971,413	₱3,457,000	₱8,196,487	₱3,851,974	₱40,279,940	₱55,684,429	₱80,257,214	₱110,209,654	₱193,732,523	₱1,710,711,864	₱2,224,694,643

2024	2014 and prior	2015	2016	2017	2018	2019	2020	2021	2022	2023	2024	Total
Accident Year												
Estimate of ultimate claims costs:												
At the end of accident year	₱10,045,100,662	₱794,720,561	₱942,741,897	₱1,076,670,806	₱1,516,585,974	₱1,389,380,613	₱1,311,731,064	₱1,186,806,315	₱816,908,049	₱916,977,994	₱1,018,907,492	₱1,018,907,492
One year later	6,165,582,670	868,615,343	1,111,305,378	826,645,841	1,577,833,019	1,266,626,502	965,145,706	712,504,577	689,182,531	756,075,137	-	756,075,137
Two years later	6,059,605,576	861,919,892	1,122,402,975	833,297,968	1,593,076,903	1,223,144,926	908,189,193	751,343,804	692,091,933	-	-	692,091,933
Three years later	6,072,464,084	851,937,907	1,123,877,598	832,443,405	1,567,864,060	1,172,432,324	909,146,549	745,466,961	-	-	-	745,466,961
Four years later	6,065,537,675	851,921,907	1,127,693,748	836,115,710	1,567,777,279	1,162,980,224	908,088,782	-	-	-	-	908,088,782
Five years later	6,065,148,980	843,401,320	1,128,112,323	837,407,284	1,566,049,664	1,148,121,617	-	-	-	-	-	1,148,121,617
Six years later	6,073,069,406	845,615,859	1,127,753,391	836,207,279	1,562,871,721	-	-	-	-	-	-	1,562,871,721
Seven years later	6,070,862,502	846,184,433	1,127,941,243	837,774,420	-	-	-	-	-	-	-	837,774,420
Eight years later	6,071,994,700	846,252,393	1,128,062,023	-	-	-	-	-	-	-	-	1,128,062,023
Nine years later	6,061,763,714	846,717,515	-	-	-	-	-	-	-	-	-	846,717,515
Ten years later	6,059,167,416	-	-	-	-	-	-	-	-	-	-	6,059,167,416
Current estimate of cumulative claims	6,059,167,416	846,717,515	1,128,062,023	837,774,420	1,562,871,721	1,148,121,617	908,088,782	745,466,961	692,091,933	756,075,137	1,018,907,492	15,703,345,017
Cumulative payments to date	(6,054,184,339)	(845,926,380)	(1,126,401,254)	(835,105,680)	(1,560,429,913)	(1,135,667,207)	(894,029,378)	(711,407,160)	(652,396,077)	(672,555,298)	(521,566,303)	(15,009,668,989)
Total net insurance liabilities included in the statement of financial position	₱4,983,077	₱791,135	₱1,660,769	₱2,668,740	₱2,441,808	₱12,454,410	₱14,059,404	₱34,059,801	₱39,695,856	₱83,519,839	₱497,341,189	₱693,676,028

15. Insurance Payables

This account consists of:

	2025	2024
Due to reinsurers and ceding companies	₱2,087,256,340	₱1,946,933,857
Funds held for reinsurers	325,113,542	424,017,119
	₱2,412,369,882	₱2,370,950,976

The roll-forward analysis of insurance payables follows:

	2025		
	Due to Reinsurers and Ceding Companies	Funds Held for Reinsurers	Total
January 1, 2025	₱1,946,933,857	₱424,017,119	₱2,370,950,976
Arising during the year (Note 18)	3,323,714,296	524,158,020	3,847,872,316
Paid/utilized	(3,183,391,813)	(623,061,597)	(3,806,453,410)
December 31, 2025	₱2,087,256,340	₱325,113,542	₱2,412,369,882
	2024		
	Due to Reinsurers and Ceding Companies	Funds Held for Reinsurers	Total
January 1, 2024	₱1,148,566,821	₱348,650,722	₱1,497,217,543
Arising during the year (Note 18)	4,477,109,167	569,404,626	5,046,513,793
Paid/utilized	(3,678,742,131)	(494,038,229)	(4,172,780,360)
December 31, 2024	₱1,946,933,857	₱424,017,119	₱2,370,950,976

Interest expense on funds held for reinsurers amounted to ₱15.19 million and ₱8.83 in 2025 and 2024, respectively.

16. Accounts Payable and Accrued Expenses

This account consists of:

	2025	2024
Commissions payable	₱296,720,056	₱547,364,733
Premium deposits	174,703,067	246,429,243
Taxes payable	80,964,341	362,451,221
Accounts payable and accrued expenses	21,666,919	245,247,471
	₱574,054,383	₱1,401,492,668

Commissions payable pertain to amounts payable to brokers and agents.

Premium deposits are payments collected in advance by the Company including overpayments and/or unidentified payments.

Taxes payable pertains to VAT Payable, Deferred Output VAT and other taxes payable. VAT payable pertains to excess output VAT over the input VAT recorded by the Company. Deferred output VAT are VAT incurred by the Company in a sale of insurance policies but not yet collected. Other taxes payable pertain to withholding, premiums, fire service, and documentary stamp taxes not yet paid by the Company.

Accounts Payable and accrued expenses pertain to services already incurred but not yet paid. These include services already incurred but awaiting billings from service providers and other intermediaries. This also includes purchases and other obligations not yet paid by the Company. It also includes cost employee related payments to government institutions such as SSS, Philhealth, and HDMF and various taxes related to cut-off adjustments made during the year.

17. Equity

Capital Stock

The details of this account as of December 31, 2025 and 2024 follow:

<i>Authorized capital stock</i>	₱700,000,000
<i>Number of authorized shares</i>	
Class A (nonvoting), ₱10 par value	56,000,000
Class B (voting), ₱10 par value	14,000,000
	70,000,000
<hr/>	
<i>Issued and outstanding shares</i>	
Class A (nonvoting), ₱10 par value	₱298,400,000
Class B (voting), ₱10 par value	74,600,000
	₱373,000,000

The capital stock of the Company is divided into 56 million Class "A" stock and 14 million Class "B" stock, with par value of 10.00 each. The shares of Class "A" stock and Class "B" stock shall be entitled, in all respects, to equal rights and privileges provided, however, that Class "A" shall have no voting rights except in those cases expressly provided by laws.

As of December 31, 2025 the Company's total number of subscribed outstanding Class A and Class B shares are 34,800,000 and 8,700,000, respectively.

Contingency Surplus

On August 14, 2020, the Company received additional funding from the Parent Company amounting to \$21.40 million (with peso equivalent of ₱1.05 billion) using the prevailing exchange rate at the date of receipt. The amount received was recognized as contingency surplus in the statement of financial position in 2020. Further, on March 6, 2023, the Company received additional funding from the Parent Company amounting to \$5.61 million (with peso equivalent of ₱0.31 billion) using the prevailing exchange rate at the date of receipt. The amount received was recognized as additional

contingency surplus in the statement of financial position in 2023. On February 11, 2025, the Company received additional funding from the Parent Company amounting to \$0.35 million (with peso equivalent of ₱20.30 million) using the prevailing exchange rate at the date of receipt. The amount received was recognized as an additional contingency surplus in the statement of financial position in 2025.

The Company's Contingency Surplus as of December 31, 2025 and December 31, 2024 amounted to 1.38 billion and 1.36 billion, respectively.

Retained Earnings

The Company had appropriated ₱12.51 million of its retained earnings for future catastrophic losses.

18. Net Earned Premiums

Gross earned premiums and reinsurers' share in gross earned premiums on insurance contracts follow:

	2025	2024
Gross premiums on insurance contracts:		
Direct insurance	₱5,769,506,932	₱6,602,548,478
Assumed reinsurance	128,369,081	192,763,262
Total gross premiums on insurance contracts (Note 14)	5,897,876,013	6,795,311,740
Gross change in provision for unearned premiums	158,185,051	(976,711,244)
Total gross earned premiums on insurance contracts (Note 14)	₱6,056,061,064	₱5,818,600,496
Reinsurers' share of insurance contracts premiums:		
Direct insurance	3,801,247,164	4,941,083,322
Assumed reinsurance	46,625,152	105,430,471
Total reinsurers' share of insurance contracts premiums (Note 14)	3,847,872,316	5,046,513,793
Reinsurers' share of gross change in provision for unearned premiums	79,393,814	(867,853,792)
Total reinsurers' share of gross earned premiums on insurance contracts (Note 14)	3,927,266,130	4,178,660,001
Net insurance earned premiums	₱2,128,794,934	₱1,639,940,495

19. Investment Income

This account consists of:

	2025	2024
Interest income on:		
Financial assets at FVOCI and amortized cost (Note 6)	₱99,195,509	₱92,570,559
Cash and cash equivalents and short-term investments (Note 4)	74,210,156	86,509,274
Fair value gain on financial assets at FVTPL	43,941,970	9,619,649
Dividend income (Note 6)	4,483,933	5,913,223
Loss on sale of financial assets at FVOCI	(1,628,924)	(3,841,872)
Loss on sale of financial assets at FVTPL	(34,887,089)	(3,825,332)
	₱185,315,555	₱186,945,501

20. Net Insurance Benefits and Claims

Gross insurance contract benefits and claims paid consist of the following:

	2025	2024
Insurance contracts benefits and claims paid:		
Direct insurance	₱1,672,422,534	₱1,551,559,319
Assumed reinsurance	29,710,705	118,609,453
Total insurance contract benefits and claims paid (Note 14)	₱1,702,133,239	₱1,670,168,772

Reinsurers' share of gross insurance contract benefits and claims paid consist of the following:

	2025	2024
Reinsurers' share of insurance contract benefits and claims paid:		
Direct insurance	₱542,680,335	₱647,965,197
Assumed reinsurance	68,857,336	106,330,393
Total reinsurers' share of insurance contract benefits and claims paid (Note 14)	₱611,537,671	₱754,295,590

Gross change in insurance contract liabilities:

	2025	2024
Change in insurance contract liabilities:		
Direct insurance	₱15,878,502	₱334,133,787
Assumed reinsurance	25,163,133	(84,079,791)
Change in provision for IBNR (Note 14)	(35,627,208)	10,980,968
Total gross change in insurance contract liabilities (Note 14)	₱5,414,427	₱261,034,964

Reinsurers' share of change in insurance contract liabilities:

	2025	2024
Reinsurers' share of change in insurance contract liabilities:		
Direct insurance	(₱133,054,416)	₱354,584,744
Assumed reinsurance	11,793,421	(48,688,760)
Change in provision for IBNR (Note 14)	(39,738,001)	33,390,308
Total reinsurers' share of change in insurance contract liabilities (Note 14)	(₱160,998,996)	₱339,286,292

21. Operating Expenses

This account consists of:

	2025	2024
Personnel expenses (Note 22)	₱377,114,058	₱365,988,790
Advertising and promotions	92,791,409	95,745,346
Taxes and licenses	57,787,628	56,069,778
Insurance and other expenses	52,821,003	2,732,209
Depreciation and amortization (Notes 12 and 28)	47,435,469	46,496,161
Rental and other building dues (Note 28)	31,010,574	34,745,555
Information technology and communication	29,815,779	34,435,461
Professional fees	28,177,192	34,488,109
Transportation and travel	12,374,416	12,311,809
Provision (reversal of provision) for impairment losses on:		
Financial assets at amortized cost (Note 6)	43,197	(213,062)
Insurance receivables (Note 5)	(11,839,795)	(324,009)
	₱717,530,930	₱682,476,147

Taxes and licenses includes amounts payable to BIR amounting to ₱30.01 million and 40.12 million, in 2025 and 2024 for basic assessments plus interest and surcharges for taxable years 2022 and 2020, respectively.

Depreciation and amortization consist of:

	2025	2024
Right-of-use assets (Note 28)	₱29,423,039	₱29,959,386
Property and equipment (Note 12)	18,012,430	16,536,775
	₱47,435,469	₱46,496,161

Rental and other building dues consist of:

	2025	2024
Expense relating to short-term leases (Note 28)	₱9,358,561	₱9,078,981
Other building dues	21,652,013	25,666,574
	₱31,010,574	₱34,745,555

22. Personnel Expenses

This account consists of:

	2025	2024
Salaries and wages	₱321,176,330	₱308,372,083
SSS, Pag-ibig fund and other contributions	17,836,246	16,942,441
Net retirement benefit expense (Note 23)	17,450,647	13,479,806
Service fee	3,719,871	7,690,098
Employee welfare costs	473,761	1,348,337
Others	16,457,203	18,156,024
	₱377,114,058	₱365,988,789

Service fee pertains to fees paid for general services outsourced from manpower agencies.
Others pertain to other employee benefits such as medical benefits including HMO.

23. Pension Benefits

Pension plan

The Company has a defined benefit pension plan, covering substantially all of its employees, which requires contribution to be made to administered funds. The plan is administered by a local bank as trustee.

The following tables summarize the components of net benefit expense recognized in the statements of income and the funded status and amounts recognized in the statements of financial position for the plan:

	2025		
	Present Value of DBO	Fair Value of Plan Assets	Net Retirement Liability
Balance at beginning of year	₱100,943,978	(₱62,351,972)	₱38,592,006
Net benefit cost in statement of income			
Current service cost	15,073,379	–	15,073,379
Net interest cost	6,218,149	(3,840,881)	2,377,268
Sub-total	21,291,528	(3,840,881)	17,450,647
Remeasurement in OCI			
Actuarial changes arising from			
Experience adjustments	(4,576,108)	1,277,581	(3,298,527)
Financial assumptions	4,285,725	–	4,285,725
Demographic assumptions	–	–	–
Sub-total	(290,383)	1,277,581	987,198
Benefits paid	(26,327,686)	26,327,686	–
Balance at end of year	₱95,617,437	(₱38,587,586)	₱57,029,851
	2024		
	Present Value of DBO	Fair Value of Plan Assets	Net Retirement Liability
Balance at beginning of year	₱86,022,083	(₱65,907,635)	₱20,114,448
Net benefit cost in statement of income			
Current service cost	11,187,923	–	11,187,923
Net interest cost	5,247,347	(2,955,464)	2,291,883
Sub-total	16,435,270	(2,955,464)	13,479,806
Remeasurement in OCI			
Actuarial changes arising from			
Experience adjustments	27,513,817	–	27,513,817
Financial assumptions	(5,744,155)	–	(5,744,155)
Demographic assumptions	(16,771,910)	–	(16,771,910)
Sub-total	4,997,752	–	4,997,752
Benefits paid	(6,511,127)	6,511,127	–
Actual contribution	–	–	–
Balance at end of year	₱100,943,978	(₱62,351,972)	₱38,592,006

Details of accumulated remeasurement loss on defined benefit plan as of year-end follow:

	2025	2024
Balance at beginning of year	(₱20,400,522)	(₱16,857,725)
Remeasurement loss recognized in other comprehensive income during the year	(987,198)	(4,997,752)
	(21,387,720)	(21,855,477)
Income tax effect	246,800	1,454,955
Balance at end of year	(₱21,140,920)	(₱20,400,522)

The principal assumptions used in determining pension obligation for the Company's plan are shown below:

	2025	2024
Discount rate	6.40%	6.16%
Rate of salary increase	7.00%	7.00%

As of December 31, 2025 and 2024, the fair value of the Company's equity in the fund amounted to ₱38.59 million and ₱65.35 million, respectively; representing 100.00% for both years, of the market value of the entire plan assets under trust.

The following is the distribution of the Company's plan assets stated at fair value:

	2025	2024
Cash and cash equivalents	₱39,922	₱640,312
Investments		
Bonds and government securities	34,989,540	42,443,527
Marketable equity securities	3,792,059	17,932,776
Other receivables	832,926	1,418,313
Liabilities	(1,066,861)	(82,956)
Total plan assets	₱38,587,586	₱62,351,972

Sensitivities

The sensitivity analysis below has been determined based on reasonably possible changes of each significant assumption on the defined benefit obligation as of the end of the reporting period, assuming all other assumptions were held constant:

	2025		2024	
	Change in variables	Impact on present value of defined benefit obligation Increase (Decrease)	Change in variables	Impact on present value of defined benefit obligation Increase (Decrease)
Discount rate	+1.00%	50,329,325	+0.50%	₱34,580,736
	-1.00%	64,726,390	-0.50%	42,890,682
Salary increase rate	+1.00%	63,924,663	+0.50%	41,303,490
	-1.00%	50,900,266	-0.50%	36,014,649

The average remaining working lives of employees as of December 31, 2025 and 2024 is 8 years and 12 years, respectively.

Maturity profile of the undiscounted benefit payments as of December 31, 2025 are as follows:

	Expected benefit payments
One to five years	₱61,750,642
More than five years to 10 years	83,541,762
More than 10 years to 15 years	101,342,257
More than 15 years to 20 years	314,365,949

24. Income Tax

The provision for (benefit from) income tax consists of:

	2025	2024
Final	₱35,115,629	₱31,772,196
Current	8,015,614	2,355,709
Deferred	(18,099,597)	(58,600,554)
	₱25,031,646	(₱24,472,649)

On June 20, 2024, the Bureau of Internal Revenue issued Revenue Memorandum Circular (RMC) No. 69-2024 reverting the Minimum Corporate Income Tax (MCIT) rate to 2% of gross income effective July 1, 2024 pursuant to RA No. 11534 or the CREATE Act. MCIT rate was previously reduced from 2% to 1% effective July 1, 2020 to June 30, 2024 upon the effectivity of CREATE Act in 2021.

The Company computed MCIT using the 2% in accordance with RMC 69-2024. Any excess of the MCIT over the RCIT is deferred and can be used as a tax credit against future income tax liability for the next three years.

Net deferred tax assets consist of the tax effects of the following:

	2025	2024
Deferred tax assets through profit or loss:		
NOLCO	₱67,001,979	₱67,001,956
Provision for IBNR losses – net	45,702,285	44,674,610
Recognition of remaining Excess MCIT (Unutilized)	10,371,323	8,937,957
Allowance for expected credit losses	7,733,510	7,677,845
Unamortized past service cost	1,830,078	3,007,126
Pension obligation	7,163,506	2,800,844
ROU Asset – net	2,521,609	2,681,039
Deferred tax assets through OCI:		
Remeasurement losses on defined benefit obligation	7,093,957	6,847,158
Deferred tax assets	149,418,247	143,628,535
Less: Deferred tax liability through profit or loss:		
Unrealized foreign exchange gain	(4,952,253)	(17,508,938)
Deferred tax liability	(4,952,253)	(17,508,938)
Net deferred tax assets	₱144,465,994	₱126,119,597

The table below shows the temporary differences for which no deferred tax assets have been recognized as the Company is not certain whether sufficient future taxable profit will be available against which the benefit from these can be utilized.

	2025	2024
Allowance for expected credit losses	140,960,701	₱153,222,582
Accrued expenses	99,357,974	124,459,827
NOLCO	77,689,545	-

The table below shows the movements of the Company's NOLCO during the year:

Year Incurred	Amount	Applied	Year Applied	Balance	Expiry Date
2020	₱-	₱92,119,702	2022	₱50,035,921	December 31, 2025**
2020	-	50,035,921	2024	-	December 31, 2025**
2024	268,007,825	-		268,007,825	December 31, 2027
2025	77,689,545	-		345,697,370	December 31, 2028

** Pursuant to RR No. 25-2020

The Philippine Government and Bureau of Internal Revenue has extended to five years the carry-over period for net operating losses incurred for taxable years 2020 and 2021. This is pursuant to the provision to the Section 4 of the Republic Act 11494 or the Bayanihan To Recover As One or Bayanihan Act and implementation of Revenue Regulation 25-2020.

As of December 31, 2025, the unexpired excess of MCIT over normal tax, which can be claimed as a deduction against income tax due, are as follows:

Year Incurred	Amount	Applied	Expired	Balance	Expiry Date
2021	3,608,170	2,347,666	1,260,504	-	December 31, 2024
2022	6,582,248	-	6,582,248	-	December 31, 2025
2024	2,355,709	-	-	2,355,709	December 31, 2027
2025	8,015,614	-	-	8,015,614	December 31, 2028
	₱20,561,741	₱2,347,666	₱7,842,752	₱10,371,323	

A reconciliation of the statutory income tax rate to effective income tax rate follows:

	2025	2024
Statutory income tax rate	25.00%	25.00%
Tax effects of:		
Gain on sale of financial assets	1.48	(0.60)
Interest income already subjected to final tax	(34.55)	54.87
Changes in unrecognized deferred tax assets	9.16	(9.35)
Dividend income	(0.89)	1.81
Nondeductible expenses	14.05	(41.74)
Effective income tax rate	14.25%	29.99%

25. Management of Capital, Insurance and Financial Risks

Governance Framework

The Company has established a risk management function with clear terms of reference and with the responsibility for developing policies on market, credit, liquidity, insurance and operational risk. It also supports the effective implementation of policies at the individual business unit levels.

The policies define the Company's identification of risk and its interpretation, limit structure to ensure the appropriate quality and diversification of assets, alignment of underwriting and reinsurance strategy to the corporate goals and specify reporting requirements.

Capital Management Framework

The primary objectives of the Company's capital management framework are to provide shareholders with a satisfactory return on their investments, financial security to policyholders, prompt payment of obligations and compliance with the regulatory requirements of the IC.

The IC capital requirements are Fixed Capitalization Requirements and Risk-Based Capital (RBC).

The Company maintains a certain level of capital to ensure sufficient solvency margins and to adequately protect the policyholders. The level of capital maintained is higher than the minimum capital requirements set by the regulators and the amount computed under the RBC Model.

The premiums received by the Company from policyholders are properly invested not only to provide for policy obligations but also to serve as capital or surplus to provide margin of safety which will attract insurance buyers.

The funds invested shall produce an investment income that will be needed to pay stockholders a fair return. While part of this income is due to favorable loss experience and sound cost management, a major portion of additional profits must be earned by managing the investment portfolio to produce a higher return on investment. While there may be a wide range of investment opportunities, the investment portfolio must always reflect the safety of the funds.

Since these funds are held in fiduciary capacity, the Code contains investment provisions that the Company should observe to protect the interest of the policyholders and of the stockholders.

The three (3) general classifications of investment requirements are:

1. Capital Investments - The Company must invest at least 25% of its minimum paid-up capital in bonds or other evidence of debt of the Government of the Philippines or its political subdivisions or in government-owned or controlled corporations and entities, including the Bangko Sentral ng Pilipinas.

Furthermore, investments shall at all times be maintained free from any lien or encumbrance and shall be deposited and held by the Commissioner of the IC for the benefit and security of the policyholders.

2. Reserve Investment - The Company must invest 100% of the Reserve for unearned premiums and Reserve funds withheld for authorized reinsurer in common or preferred stocks and government or private bonds, real estate and real estate loans, collateral loans, adequately secured obligations and other securities as may be approved by the Commissioner.

3. Surplus Investment - After complying with the capital and reserve investment requirements, the Company may invest any portion of its funds, representing earned surplus in stocks, bonds, real estate, equities of other financial institutions, engaged in the buying and selling of short-term debt instruments, securities issued by registered enterprises under R.A. 5186, otherwise known as the Investment Incentives Act.

To meet its capital management objectives, the Company formed an Investment Management Committee primarily tasked to establish investment strategies consistent with the management objectives and the IC requirements. The Committee has likewise set up limits and control procedures and adequate contingency plans for the Company to withstand both temporary and long-term disruption in its ability to fund activities in a timely manner at a reasonable cost.

No changes were made to its capital base, objectives, policies and processes in the current year.

Minimum Statutory Net worth

On August 15, 2013, the President of the Philippines approved the Republic Act No. 10607 to be known as the “New Insurance Code” (Amended Code) which provides the new capitalization requirements of all existing insurance companies based on net worth on a staggered basis starting June 30, 2015 up to December 31, 2022.

On January 13, 2015, the IC issued CL No. 02-2015 which provide clarifications on the minimum capitalization requirements under Sections 194, 197, 200 and 289 of the Amended Code. It also supersedes Department of Finance Order (DO) No. 15-2012, DO No. 27-2006, CL No. 22-2008 and CL No. 26-2008. According to the CL, the minimum net worth requirement would be ₱250.00 million by December 31, 2013. The minimum net worth shall be unimpaired at all times and shall increase to the amounts as follows:

Minimum Net worth	Compliance Date
₱550,000,000	December 31, 2016
900,000,000	December 31, 2019
1,300,000,000	December 31, 2022

On February 11, 2020, the IC issued Advisory No. 2-A-2020 to require all life and nonlife insurance companies to comply with the minimum net worth and minimum capital investment requirements until February 28, 2020. Otherwise, a show cause order shall be served to direct any company failing to meet these requirements, to make good any such deficient by cash within 15 days from the receipt of the letter, and to order such company not to take any new risk of any kind or character unless and until it makes good any such deficiency pursuant to Section 200 of the Amended Insurance Code.

On March 24, 2020, the IC issued Circular Letter No, 2020-21 stating that all show cause order related to Advisory No. 2-A-2020 shall be put on hold until further notice. This is in line with Presidential Proclamation No. 922, declaring a State of Public Health Emergency in throughout the Philippines due to Corona Virus Disease 2020 (COVID-19) which impede both the operations of IC and insurance companies by the implementation of travel restrictions and the temporary suspension of business activities. On March 6, 2024, to comply with minimum net worth requirement, the Company received additional capital infusion from Parent Company amounting to \$5.61 million (with Peso equivalent of ₱307.54 million) using prevailing exchange rate at the date of receipt. The amount received will be reflected as contingency surplus in the 2024 statement of financial position.

On February 11, 2025, to comply with the minimum net worth requirement, the Company received additional capital infusion from Parent Company amounting to \$0.35 million (with peso equivalent of

₱20.30 million) using the prevailing exchange rate at the date of receipt. The amount received has been reflected as contingency surplus in the statement of financial position in 2025.

As of December 31, 2025 and 2024, the Company has an estimated statutory net worth of ₱1.51 billion and actual net worth of ₱1.06 billion, respectively. The deficiency of the Company's statutory net worth in 2024 was subsequently covered in full through capital infusion from the parent company in 2025 as disclosed below and the consideration of the after-date transactions specifically related to creditable withholding taxes. Subsequent considerations of IC resulted in the Company's actual net worth amounting to ₱1.31 billion. The final amount of net worth for 2025 can be determined only after the accounts of the Company have been examined by the IC.

Risk-based Capital Requirements

IMC No. 7-2006 provides for the RBC framework for the nonlife insurance industry to establish the required amounts of capital to be maintained by companies in relation to their investment and insurance risks. Every nonlife insurance company is required annually to maintain a minimum RBC ratio of 100% and not to fail the trend test. Failure to meet the minimum RBC ratio shall subject the insurance company to the corresponding regulatory intervention which has been defined at various levels.

The RBC ratio shall be calculated as net worth divided by the RBC requirement. Net worth shall include the Company's paid-up capital, contributed and contingency surplus and unassigned surplus. Revaluation and fluctuation reserve accounts shall form part of net worth only to the extent authorized by IC.

In 2016, the IC issued Circular Letter No. 2016-68, Amended Risk-Based Capital (RBC2) Framework, pursuant to Section 437 of the Amended Insurance Code. The RBC ratio shall be calculated as Total Available Capital (TAC) divided by the RBC requirement. TAC is the aggregate of Tier I and Tier 2 Capital minus deductions, subject to applicable limits and determinations. Tier I Capital represents capital that is fully available to cover losses of the insurer at all times on a going-concern and winding up basis (e.g., Capital Stock, Statutory Deposit, Capital Stock Subscribed, Contributed Surplus, etc.). Tier 2 Capital does not have the same high-quality characteristics of Tier I Capital but can provide an additional buffer to the insurer (e.g., Reserve for Appraisal Increment-Property and Equipment, Remeasurement Gains (Losses) on Retirement Pension Asset (Obligation), etc.). Tier 2 Capital shall not exceed 50% of Tier I Capital.

The following table shows how the RBC ratio as of December 31, based on RBC2 components, was determined:

	2025 (Estimate)	2024 (Actual)
TAC	2,172,595,655.31	1,963,659,273
RBC requirement	894,014,138.54	1,030,351,186
RBC Ratio	243%	191%

The final amount of the RBC ratio for 2025 can be determined only after the accounts of the Company have been examined by the Insurance Commission specifically for the determination of admitted and non-admitted assets as defined under the Insurance Code. The RBC ratio for 2024 is based on the published synopsis after the examination and verification of the Insurance Commission.

New Regulatory framework

Pursuant to the powers vested in the Insurance Commissioner by Sections 189, 200, 437 and 438 of Republic Act (RA) No. 10607, otherwise known as the Insurance Code, as amended, the following regulatory requirements and actions for the new regulatory framework are hereby adopted and promulgated:

Circular Letter No. 2016-65, *Financial Reporting Framework under Section 189 of the Amended Insurance Code (Republic Act No. 10607)*, prescribes the new financial reporting framework (FRF) that will be used for the statutory quarterly and annual reporting. This also includes rules and regulations concerning Titles III and IV of Chapter III of the Amended Insurance Code and all other accounts not discussed in the Amended Insurance Code but are used in accounting of insurance and reinsurance companies.

Circular Letter 2016-67, *Valuation Standards for Non-life Insurance Policy Reserves*, prescribes the new valuation methodology for the non-life insurance companies. This circular letter superseded Circular Letter No. 2015-32. Non-life insurance companies will be changing the basis of valuation of their non-life insurance reserves. In addition to the unearned premium reserves, the concept of unexpired risk reserves is also included in the calculation of the premium liability. The incurred but not reported (IBNR) reserves will now be computed using actuarial projection techniques such as but not limited to the chain ladder method, expected loss ratio method and Bornheutter-Ferguson method. A margin for adverse deviation is estimated based on standard projection techniques or combination of such techniques, such as but not limited to the Mack Method, Bootstrapping Method, Stochastic Chain Ladder Method to bring the actuarial estimate of the Policy Liabilities at the 75th percentile level of sufficiency. Discount rates to be used shall be current risk-free rates. The rates shall exactly match the duration of the policy and the currency of the cash flows and shall be prescribed by the Insurance Commission.

Circular Letter No. 2016-68, *Amended Risk-Based Capital (RBC2) Framework*, prescribes that all insurance companies must satisfy the minimum statutory RBC ratio of 100% and not fail the Trend Test as stated under Section 3 of this Circular. The RBC ratio of an insurance company shall be equal to the Total Available Capital (TAC) divided by the RBC requirement.

Circular Letter 2018-18, *New Standards for Non-Life Insurance Policy Reserves*, superseded Circular Letters 2016-06 and 2016-67. Under this methodology of determining the ultimate premium liability, the concept of deferred acquisition cost is introduced. The premium liability to be recognized is the higher of the unearned premium reserve net of deferred acquisition cost or the unearned risks reserve.

Circular Letter 2018-19, *Implementation Requirements for Financial Reporting, Valuation Standards for Insurance Policy Reserves and Amended Risk Based Capital (RBC2) framework* prescribes that the Margin of Adversed Deviation (MFAD) should be company specific as computed by IC-accredited actuary.

Insurance Risk

The risk under insurance contracts is the possibility of occurrence of insured event and uncertainty of the amount and timing of resulting claims. The principal risk the Company faces under such contracts is that the actual claims exceed the carrying amount of insurance liabilities. This could occur due to any of the following:

- Occurrence risk - the possibility that the number of insured events will differ from those expected.
- Severity risk - the possibility that the cost of the events will differ from those expected.

- Development risk - the possibility that changes may occur in the amount of an insurer's obligation at the end of the contract period.

The variability of risks is improved by diversification of risk of loss to a large portfolio of insurance contracts as a more diversified portfolio is less likely to be affected across the board by a change in any subset of the portfolio. The variability of risks can also be improved by careful selection and implementation of underwriting strategy and guidelines.

The business of the Company comprises short-term nonlife insurance contracts. For general insurance contracts, claims are often affected by natural disasters, calamities, terrorist attacks, etc.

These risks currently do not vary significantly in relation to the location of the risk insured by the Company whilst undue concentration by amounts could have an impact on the severity of benefit payments on a portfolio basis.

The Company has an objective to control and minimize insurance risk, to reduce volatility of operating profits. The Company manages insurance risk through the following mechanisms:

- The use and maintenance of management information systems that provide up-to-date, accurate and reliable data on risk exposure at any point in time;
- Guidelines are issued for concluding insurance contracts and assuming insurance risks;
- Pro-active claims handling procedures are followed to investigate and adjust claims thereby preventing settlement of dubious or fraudulent claims;
- 4. Reinsurance is used to limit the Company's exposure to large claims by placing risk with reinsurers providing high security; and
- 5. Diversification is accomplished by achieving sufficiently large population of risks to reduce the variability of the expected outcome. The diversification strategy seeks to ensure that underwritten risks are well diversified in terms of type and amount of risk, industry and geography.

Reinsurance

The Company limits its exposure to loss within insurance operations through participation in reinsurance arrangements. The majority of the business ceded is placed on a quota-share basis with retention limits varying by product line and territory. Amounts recoverable from reinsurers are estimated in a manner consistent with the assumptions used for ascertaining the underlying policy benefits and are presented in the statement of financial position as reinsurance assets.

Even though the Company may have reinsurance arrangements, it is not relieved of its direct obligations to its policyholders and thus, a credit exposure exists with respect to reinsurance ceded, to the extent that any reinsurer is unable to meet its obligations assumed under such reinsurance agreements.

The Company is neither dependent on a single reinsurer nor are the operations of the Company substantially dependent upon any reinsurance contract.

The following table sets out the concentration of the claims liabilities by type of contract:

	2025			2024		
	Gross Liabilities	Reinsurers' Share of Liabilities	Net Liabilities	Gross Liabilities	Reinsurers' Share of Liabilities	Net Liabilities
Motor car	₱340,769,728	₱43,571,694	₱297,198,034	₱378,594,156	₱57,497,205	₱321,096,951
Fire	1,423,227,173	1,084,858,979	338,368,194	1,393,689,958	1,151,038,401	242,651,557
Engineering	98,783,988	66,468,664	32,315,324	137,368,648	103,199,392	34,169,256
Casualty	125,278,293	98,309,749	26,968,544	140,031,441	104,698,630	35,332,811
Bonds	26,223,791	9,160,797	17,062,994	24,687,549	1,441,550	23,245,999
Accident	21,041,351	4,439,518	16,601,833	13,663,012	3,414,567	10,248,446
Marine	65,319,558	63,210,216	2,109,342	118,872,335	109,728,870	9,143,465
Medical	129,465,191	-	129,465,191	17,787,544	-	17,787,544
	₱2,230,109,073	₱1,370,019,617	₱860,089,456	₱2,224,694,643	₱1,531,018,615	₱693,676,029

Financial Instruments

Due to the short-term nature of cash and cash equivalents, short-term investments, insurance receivables, loans and receivables, accrued income, insurance payables, and accounts payable and accrued expenses, their carrying values reasonably approximate fair values at year-end.

The fair value of financial assets at FVTPL that are actively traded in organized financial markets is determined by reference to quoted market within the bid-offer price range, at the close of business on the reporting date or last trading day as applicable.

The fair value of unquoted equity shares where the fair value is not reasonably determinable due to the unpredictable nature of cash flows and the lack of suitable method at arriving at are liable fair value are carried at cost.

Fair Value Measurement

The Company classifies the fair value measurement of financial assets in the fair value hierarchy as follows:

	2025			Total
	Quoted prices in active markets (Level 1)	Significant observable inputs (Level 2)	Significant unobservable inputs (Level 3)	
Assets measured at fair value:				
Financial assets at FVTPL				
Listed equity securities	₱2,915,528	₱-	₱-	₱2,915,528
Golf club shares	-	60,300,000	-	60,300,000
Unit investment fund	-	20,642,991	-	20,642,991
Unlisted equity securities	-	-	20,000	20,000
	2,915,528	80,942,991	20,000	83,878,519
Financial assets at FVOCI				
Government debt securities				
Local currency	1,232,733,582	-	-	1,232,733,582
	1,235,649,110	80,942,991	20,000	1,316,612,101
Assets for which fair values are disclosed:				
Financial asset at amortized cost				
Government debt securities				
Local currency	414,385,132	-	-	414,385,132
Corporate bonds	21,300,000	-	-	21,300,000
Loans and receivables				
Accounts receivables	-	-	170,860,878	170,860,878
Employee receivables	-	-	22,400,131	22,400,131

2025				
	Quoted prices in active markets (Level 1)	Significant observable inputs (Level 2)	Significant unobservable inputs (Level 3)	Total
Investment properties	-	-	2,745	2,745
	₱435,685,132	₱-	₱193,263,754	₱628,948,886
2024				
	Quoted prices in active markets (Level 1)	Significant observable inputs (Level 2)	Significant unobservable inputs (Level 3)	Total
Assets measured at fair value:				
Financial assets at FVTPL				
Listed equity securities	₱172,114,865	-	-	₱172,114,865
Golf club shares	-	59,300,000	-	59,300,000
Unit investment fund	-	9,374,660	-	9,374,660
Unlisted equity securities	-	-	20,000	20,000
	172,114,865	68,674,660	20,000	240,809,525
Financial assets at FVOCI				
Government debt securities				
Local currency	978,914,565	-	-	978,914,565
	1,151,029,430	68,674,660	20,000	1,219,724,090
Assets for which fair values are disclosed:				
Financial asset at amortized cost				
Government debt securities				
Local currency	437,173,738	-	-	437,173,738
Corporate bonds	24,940,000	-	-	24,940,000
Loans and receivables				
Accounts receivables	-	-	188,089,581	188,089,581
Employee receivables	-	-	15,001,125	15,001,125
Investment properties	-	-	2,745	2,745
	462,113,738	-	203,093,451	665,207,189
	₱1,613,143,168	₱68,674,660	₱203,113,451	₱1,884,931,279

Fair values of investment in securities classified as financial assets at FVTPL and FVOCI were determined using Level 1. The fair values of financial instruments classified as financial assets at FVTPL and at FVOCI that are actively traded in an organized exchange or active markets are determined by reference to quoted market or broker bid prices at the close of business as of reporting dates.

The fair values of accounts receivables and employee receivables are determined by computing the present value of the expected future cash flows of the loans using the predetermined market rate for similar instrument as of reporting date as discount rate.

Fair value of investment properties are derived using the sales comparison approach.

In 2025 and 2024, there were no transfers between Level 1 and Level 2 of fair value measurements, and no transfer into and out of Level 3 fair value measurement.

Accounts with fair value measured under Level 3 have no effect of measurements in profit or loss or in other comprehensive income for both 2025 and 2024.

Financial Risk

The Company is exposed to financial risk through its financial assets, financial liabilities and insurance liabilities. In particular, the key financial risk is that the proceeds from its financial assets

are not sufficient to fund the obligations arising from its insurance contracts. The most important components of this financial risk are credit risk, liquidity risk and market risk.

The Company's objectives in managing exposure to financial risks include providing financial security to policyholders, ensure prompt payment of its obligations and to provide owners with a satisfactory return on their investments.

To ensure that these objectives are met, the Company's policies and procedures require monitoring of financial risks by the Chief Financial Officer and regularly reviewed by the BOD.

Credit risk

Credit risk arises from the possibility of asset impairment occurring because counterparties cannot meet their obligations in transactions involving financial instruments.

Management has established a Credit Control Policy, which provides for terms of business and credit reference criteria. The policy requires that financial references are obtained for each agent and broker when credit is given. Credit terms are set for the counterparty, but these are withdrawn or restricted when these are breached. Any deviation from the policy requires justification subject to approval by the Management. The Policy is regularly reviewed by the Management and amended as necessary.

The Company's procedures provide for the monitoring of the counterparty's ability to meet its obligations through regular review of each account. Statements of accounts with covering letter are regularly sent to agents and brokers reminding them of their outstanding balances and to follow up payment. Reconciliation of accounts is also done on a regular basis.

For cash and cash equivalents and investments, the Company considers the safety of the investment, yield or income, liquidity, diversification, capital growth and appreciation.

The following are the acceptable instruments set up by the Investment Committee in order of priority:

1. Government Securities
2. Special Savings Accounts
3. Corporate bonds from listed companies
4. Preferred and Common stocks (Blue Chip stocks only)

The table below shows the maximum exposure to credit risk for the components of its statement of financial position.

	2025	2024
Cash and cash equivalents* (Note 4)	₱2,101,762,456	₱2,892,032,215
Insurance receivables (Note 5)	2,496,369,715	2,299,432,183
Short-term investments (Note 4)	1,415,900	-
Financial assets:		
Financial assets at FVOCI (Note 6)	1,232,733,582	978,914,565
Financial assets at amortized cost (Note 6)	435,685,132	462,113,738
Financial assets at FVTPL (Note 6)	83,878,519	240,809,525
Loans and receivables (Note 7)	193,261,009	203,090,706
Accrued income (Note 9)	21,983,093	32,805,465
	₱6,567,089,406	₱7,109,198,397

*Excluding cash on hand amounting to ₱105,800 as of December 31, 2025 and 2024, respectively.

The table below provides information regarding the credit risk exposure of the Company by classifying assets according to the Company's credit ratings of counterparties.

	2025			Total
	Investment Grade	Satisfactory	Past Due or Credit-Impaired	
Cash and cash equivalents*	₱2,101,762,456	₱-	₱-	2,101,762,456
Short-term investments	1,415,900	-	-	1,415,900
Insurance receivables:				
Due from brokers and agents	1,386,640,505	588,180,889	17,505,275	1,992,326,669
Due from ceding companies and reinsurers	9,816,482	66,612,983	520,640	76,950,105
Reinsurance recoverable on paid losses	37,053,252	389,194,020	845,669	427,092,941
Financial assets:				
Financial assets at FVTPL				
Unit investment fund	83,878,519	-	-	83,878,519
Financial assets at FVOCI				
Government debt securities	1,232,733,582	-	-	1,232,733,582
Financial assets at amortized cost				
Government debt securities	413,946,636	-	438,496	414,385,132
Corporate bonds	21,300,000	-	-	21,300,000
Loans and receivables:				
Accounts receivable	1,886,130	111,631,953	57,342,795	170,860,878
Employee receivables	7,908,480	14,491,651	-	22,400,131
Accrued income	21,983,093	-	-	21,983,093
Total	₱5,320,325,035	₱1,170,111,496	₱76,652,875	₱6,567,089,406

*Excluding cash on hand amounting to ₱105,800 as of December 31, 2025.

	2024			Total
	Investment Grade	Satisfactory	Past Due or Credit-Impaired	
Cash and cash equivalents*	₱2,892,032,215	₱-	₱-	₱2,892,032,215
Short-term investments	-	-	-	-
Insurance receivables:				
Due from brokers and agents	918,487,679	507,844,490	29,345,070	1,455,677,239
Due from ceding companies and reinsurers	28,340,628	69,028,716	520,640	97,889,984
Reinsurance recoverable on paid losses	189,795,422	555,223,869	845,669	745,864,960
Financial assets:				
Financial assets at FVTPL				
Unit investment fund	9,374,660	-	-	9,374,660
Financial assets at FVOCI				
Government debt securities	978,914,565	-	-	978,914,565
Financial assets at amortized cost				
Government debt securities	436,778,439	-	395,299	437,173,738
Corporate bonds	24,940,000	-	-	24,940,000
Loans and receivables:				
Accounts receivable	19,569,937	111,176,849	57,342,795	188,089,581
Employee receivables	1,596,958	13,404,167	-	15,001,125
Accrued income	32,805,465	-	-	32,805,465
Total	₱5,532,635,968	₱1,256,678,091	₱88,475,513	₱6,877,763,532

*Excluding cash on hand amounting to ₱105,800 as of December 31, 2024.

The Company uses a credit rating concept based on the borrowers and counterparties' overall creditworthiness, as follows:

Investment grade - This rating class is given to borrowers and counterparties who possess strong to very strong capacity to meet its obligations. These financial assets have the smallest degree of financial risk.

Satisfactory - This rating class is given to borrowers and counterparties who possess above average capacity to meet its obligations.

Liquidity risk

Liquidity or funding risk is the risk that an entity will encounter difficulty in raising funds to meet commitments associated with financial instruments. Liquidity risk may result from either the inability to sell financial assets quickly at their fair values; or counterparty failing on repayment of a contractual obligation; or insurance liability falling due for payment earlier than expected; or inability to generate cash inflows as anticipated.

Liquidity risk is a risk due to uncertain liquidity. An institution may suffer liquidity problem when its credit rating falls. The Company is also exposed to liquidity risk if markets on which it depends on are subject to loss of liquidity.

It is the Company's objective to develop a plan that will provide a well-balanced cash flow to ensure that enough cash is available to meet its obligations and to fund its operational requirements. A well-managed cash flow statement will yield positive cash balance in compliance to the requirement of the IC.

To meet these objectives, the Company prepares a Cash Flow Plan which entails forecasting and tabulating all significant cash inflows relating to premiums paid by policyholders, interest received from investments and others, and analyzing in detail the timing of expected payments relating to supplies, wages, other expenses, capital expenditure, dividends, tax, and others. Excess funds resulting from positive cash flows are invested in short term placements and high yielding government securities.

The table below summarizes the maturity profile of the financial assets and liabilities of the Company using fair value or undiscounted contractual amounts based on remaining contractual maturity and for the insurance contract liabilities, based on the estimated timing of net cash outflows.

	2025						Total
	Up to a year	1 to 3 years	3 to 5 years	Over 5 years	No term		
Cash and cash equivalents*	₱2,101,762,456	₱-	₱-	₱-	₱-	₱-	2,101,762,456
Short-term investments*	1,415,900	-	-	-	-	-	1,415,900
Insurance receivables	2,496,369,715	-	-	-	-	-	2,496,369,715
Financial assets							
Financial assets at FVTPL	20,642,991	-	-	-	-	63,235,528	83,878,519
Financial assets at FVOCI*	95,790,458	167,272,569	300,875,741	1,890,440,523	-	-	2,454,379,291
Financial assets at amortized cost*	140,366,688	43,912,946	-	540,876,366	-	-	725,156,000
Loans and receivables	193,261,009	-	-	-	-	-	193,261,009
Accrued income	21,983,093	-	-	-	-	-	21,983,093
Total financial assets	₱5,071,592,309	₱211,185,515	₱300,875,741	₱2,431,316,889	₱63,235,528	₱8,078,205,983	
Insurance contract liabilities	2,230,109,073	-	-	-	-	-	2,230,109,073
Insurance payables	2,412,369,882	-	-	-	-	-	2,412,369,882
Accounts payable and accrued expenses**	595,721,302	-	-	-	-	-	595,721,302
Lease liability*	30,602,756	24,958,249	-	-	-	-	55,561,005
Total financial liabilities	₱5,268,803,013	₱24,958,249	₱-	₱-	₱-	₱-	5,293,761,262

*amount includes future interest

**accounts payable and accrued expenses excludes taxes

	2024						Total
	Up to a year	1 to 3 years	3 to 5 years	Over 5 years	No term		
Cash and cash equivalents*	₱2,892,032,215	₱-	₱-	₱-	₱-	₱-	₱2,892,032,215
Short-term investments*							
Insurance receivables	2,299,432,183	-	-	-	-	-	2,299,432,183
Financial assets							
Financial assets at FVTPL	9,374,660	-	-	-	231,434,865	-	240,809,525
Financial assets at FVOCI*	-	42,071,560	245,496,488	691,346,517	-	-	978,914,565
Financial assets at amortized cost*	3,640,000	176,898,339	-	281,575,399	-	-	462,113,738
Loans and receivables	203,090,706	-	-	-	-	-	203,090,706
Accrued income	32,805,465	-	-	-	-	-	32,805,465

	2024					
	Up to a year	1 to 3 years	3 to 5 years	Over 5 years	No term	Total
Total financial assets	₱5,440,375,229	₱218,969,899	₱245,496,488	₱972,921,916	₱231,434,865	7,109,198,397
Insurance contract liabilities	₱2,224,694,644	₱-	₱-	₱-	₱-	₱2,224,694,643
Insurance payables	2,370,950,976	-	-	-	-	2,370,950,976
Accounts payable and accrued expenses**	1,170,735,457	-	-	-	-	1,170,735,457
Lease liability*	85,621,767	-	-	-	-	85,621,767
Total financial liabilities	₱5,852,002,844	₱-	₱-	₱-	₱-	₱5,852,002,843

*amount includes future interest

**accounts payable and accrued expenses excludes taxes

Market risk

Market risk is the risk of change in fair value of financial instruments from fluctuation in foreign exchange rates (currency risk), market interest rates (interest rate risk) and market prices (price risk), whether such change in price is caused by factors specific to the individual instrument or its issuer or factors affecting all instruments traded in the market.

Market risk is the risk to an institution's financial condition from volatility in the price movements of the assets contained in a portfolio. Market risk represents what the Company would lose from price volatilities. Market risk can be measured as the potential gain or loss in a position or portfolio that is associated with a price movement of a given probability over a specified time horizon.

The Company manages market risk by evenly distributing capital among investment instruments.

The Company structures the levels of market risk it accepts through a sound market risk policy based on specific guidelines set by the Investment Committee. This policy constitutes certain limits on exposure of investments mostly with top-rated banks, which are selected on the basis of the bank's credit ratings, capitalization and quality servicing being rendered to the Company. Also, the said policy includes diversification benchmarks of investment portfolio to different investment types duly approved by the IC, asset allocation and portfolio limit structure.

Moreover, control of relevant market risks can be addressed through compliance reporting of market risk exposures, regular monitoring and review of the Company's investment performance and upcoming investment opportunities for pertinence and changing environment.

Foreign currency risk

The Company's principal transactions are carried out in Philippine peso and its exposure to foreign exchange risk arises primarily with respect to the US Dollar, as it deals with foreign reinsurers in its settlement of its obligations and receipt of any claim reimbursements.

The Company's financial assets are denominated in the same currencies as its insurance liabilities which mitigate the foreign currency exchange rate risk. Thus, the main foreign exchange risk arises from recognized assets and liabilities denominated in currencies other than those in which insurance liabilities are expected to be settled significantly from the previous capital infusion of Parent Company as disclosed in Note 17 which were in Dollar time deposits amounting to 1.80 billion and 1.68 billion in 2025 and 2024, respectively.

The following table summarizes the Company's exposure to foreign currency exchange risk as of December 31, 2025 and 2024:

	2025		2024	
	US\$	PHP	US\$	PHP
Assets				
Cash and cash equivalents	\$32,735,454	₱1,924,517,331	\$33,082,446	₱1,913,654,084
Insurance receivables	2,762,437	162,403,671	2,544,511	147,187,242
	\$35,497,891	₱2,086,921,002	\$35,626,957	₱2,060,841,326
Liabilities				
Other insurance payables	\$9,949,170	₱584,911,704	\$4,661,687	₱269,655,297

The analysis below is performed for reasonably possible movements in key variables with all other variables held constant, showing the impact on profit before tax (due to changes in fair value of currency sensitive monetary assets and liabilities).

Currency	2025		2024	
	Change in Rate	Impact on income before tax	Change in Rate	Impact on income before tax
USD	+1.94%	₱29,125,542	+3.95%	₱70,662,746
USD	-1.94%	(29,125,542)	-3.95%	(70,662,746)

There is no impact on the Company's equity other than those already affecting the net income.

Interest rate risk

Interest rate risk is the risk that the value/future cash flows of a financial instrument will fluctuate because of changes in market interest rates.

Floating rate instruments expose the Company to cash flow interest risk, whereas fixed interest rate instruments expose the Company to fair value interest rate risk. The Company's fixed rate investments in particular are exposed to fair value interest rate risk.

The Company's market risk policy requires it to manage interest rate risk by investing in fixed rate instruments.

The following table shows the information relating to the Company's financial instruments that are exposed to fair value interest rate risk presented by maturity profile.

	Interest Rates	Maturity				Total
		Within 1 year	1-3 years	3-5 years	Over 5 years	
Financial assets at FVOCI						
2025	4.63%-8.75%	₱95,092,574	₱146,377,685	₱235,467,106	₱755,796,217	₱1,232,733,582
2024	4.00%-8.75%	₱-	₱42,071,560	₱245,496,488	₱691,346,517	₱978,914,565

The analysis below is performed for reasonably possible movements in key variables with all other variables held constant, showing the impact on equity (that reflects adjustments on revaluing fixed rate financial assets at FVOCI).

	Change in variables	2025	2024
		Impact on equity Increase (Decrease)	
Peso	+100 basis points	(₱12,327,335)	(₱9,789,145)
	-100 basis points	12,327,335	9,789,145

Equity price risk

The Company's price risk exposure at year-end relates to financial assets and liabilities whose values will fluctuate as a result of changes in market prices, principally investments in equity securities.

Such investment securities are subject to price risk due to changes in market values of instruments arising either from factors specific to individual instruments or their issuers or factors affecting all instruments traded in the market.

The Company's market risk policy requires it to manage such risks by setting and monitoring objectives and constraints on investment, diversification plan and limits on investments.

The analysis below is performed for reasonably possible movements in key variables with all other variables held constant, showing the impact on equity (that reflects changes in fair value of financial assets at FVTPL).

	2025		2024	
	Change in Variable	Impact on equity Increase (Decrease)	Change in Variable	Impact on equity Increase (Decrease)
Market Index 1	+5.34%	₱155,689	+3.61%	₱8,693,224
	-5.34%	(155,689)	-3.61%	(8,693,224)

26. Maturity Profile of Assets and Liabilities

The table below presents the assets and liabilities of the Company as of December 31, 2025 and 2024 analyzed according to whether they are expected to be recovered or settled within one year and beyond one year from the reporting date:

	2025			2024		
	Within One Year	Beyond One Year	Total	Within One Year	Beyond One Year	Total
Financial Assets						
Cash and cash equivalents	₱2,101,863,256	₱-	₱2,101,863,256	₱2,892,138,015	₱-	₱2,892,138,015
Short-term investments	1,415,900	-	1,415,900	-	-	-
Insurance receivables	2,496,369,715	-	2,496,369,715	2,299,432,183	-	2,299,432,183
Financial assets at FVTPL:						
Listed common shares	-	2,915,528	2,915,528	172,114,865	-	172,114,865
Club shares	-	60,300,000	60,300,000	59,300,000	-	59,300,000
Unit Investment Fund	20,642,991	-	20,642,991	9,374,660	-	9,374,660
Unlisted shares	-	20,000	20,000	20,000	-	20,000
Financial assets at FVOCI:						
Government treasury bonds/bills	95,092,574	1,137,641,008	1,232,733,582	-	978,914,565	978,914,565
Financial assets at amortized cost:						
Government treasury bonds/bills	135,920,716	278,464,416	414,385,132	3,640,000	433,533,738	437,173,738
Corporate bonds	-	21,300,000	21,300,000	-	24,940,000	24,940,000
Loans and receivables	135,918,214	57,342,795	193,261,009	145,747,911	57,342,795	203,090,706
Accrued interest income	21,983,093	-	21,983,093	32,805,465	-	32,805,465
	₱5,009,206,459	₱1,557,983,747	₱6,567,190,206	₱5,614,573,099	₱1,494,731,098	₱7,109,304,197
Nonfinancial Assets						
Reinsurance assets	-	3,427,353,529	3,427,353,529	-	3,667,746,340	3,667,746,340
Deferred Acquisition Costs	301,388,533.64	52,628,933	354,017,467	59,724,631	353,365,199	413,089,830
Investment Properties – net	-	2,745	2,745	-	2,745	2,745
Property and Equipment	-	94,564,996	94,564,996	-	163,068,193	163,068,193
Right of Use Assets	-	140,367,731	140,367,731	-	140,367,729	140,367,729
Deferred Tax Assets – net	-	144,465,994	144,465,994	-	126,119,619	126,119,619
Other Assets	27,900,638	670,188,617	698,089,255	68,871,556	637,579,725	706,451,281
	329,289,172	4,529,572,545	4,858,861,717	128,596,187	5,088,249,550	5,216,845,737
	₱5,338,495,631	₱6,087,556,292	₱11,426,051,923	₱5,683,444,655	₱6,642,705,279	₱12,326,149,934
Less: Allowance for credit losses			₱171,894,741			₱183,660,989
Accumulated depreciation			137,934,129			187,859,116
			₱11,116,223,053			₱11,956,909,182
Financial Liabilities						
Insurance payables	₱2,412,369,882	₱-	₱2,412,369,882	₱2,370,950,976	₱-	₱2,370,950,976
Accounts payable and accrued expenses	493,090,042	-	493,090,042	1,170,735,457	-	1,170,735,457
Lease liability	30,602,756	24,958,249	55,561,005	30,060,760	55,561,007	85,621,767
	2,936,062,680	24,958,249	2,961,020,929	3,571,747,193	55,561,007	3,627,308,200
Nonfinancial Liabilities						
Insurance contract liabilities	5,381,277,165	-	5,381,277,165	5,534,047,788	-	5,534,047,788
Deferred reinsurance commissions	109,432,104	27,502,024	136,934,128	29,606,914	118,118,575	147,725,489
Taxes payable	86,807,756	-	86,807,756	236,720,791	-	236,720,791
Net pension liability	-	57,029,851	57,029,851	-	38,592,006	38,592,006
	5,577,517,025	84,531,875	5,662,048,900	5,800,375,493	156,710,581	5,957,086,074
	₱8,513,579,705	₱109,490,124	₱8,623,069,829	₱9,372,122,686	₱212,271,588	₱9,584,394,274

28. Leases Commitments

Company as a Lessee

The Company entered into the following lease agreements:

- I. Leases included in Right of Use
- a. Five-year lease for its main office premises effective October 15, 2022 until October 14, 2027 with stipulated monthly rent of ₱2,340,000 and parking lease with stipulated monthly rent of ₱139,500 both shall have an escalation rate of 5% on the second year and 5% in succeeding years.
 - b. Two-year lease of an office space for its Angeles branch effective February 1, 2025 to January 31, 2026. The stipulated monthly rent of ₱74,088.
 - c. Three-year lease of an office space for its Dagupan branch effective January 1, 2024 to December 31, 2025 with a stipulated monthly rent of ₱64,723 and an escalation rate of 5.0% annually.
 - d. Three-year lease of an office space for its Binondo branch effective May 16, 2024 to April 30, 2026. The stipulated monthly rent of ₱48,000 shall have an escalation rate of 5.0% on the second year and 10% on the third year.
 - e. Annual lease for an office space for its Cebu branch effective May 16, 2022 until May 15, 2024. The stipulated monthly rent is ₱90,000. This was renewed last May 1, 2024 for monthly rate ₱74,000, with 5% escalation every year until April 30, 2026.
 - f. Five-year lease of an office space for its Laguna branch office effective February 21, 2021 to January 31, 2026 with stipulated monthly rent of ₱73,500 and shall have an escalation rate of 5% annually.
- II. Short-term or Low-value Leases
- a. Annual lease of an office space for its Cagayan de Oro branch effective April 1, 2022 to March 31, 2023 with a stipulated monthly rent of ₱43,095. The lease was renewed on April 1, 2023, and 2024 at a monthly rate of ₱43,095, valid until March 31, 2025. The lease contract was subsequently renewed on April 1, 2025 for the same rate, effective until March 15, 2026.
 - b. Annual lease of an office space for its Quezon City branch as follows:

Unit	Period	Monthly Rent
Unit 602	January 1, 2025 to December 31, 2025	₱103,121
Unit 604	January 1, 2025 to December 31, 2025	24,351
Unit 601-A	January 1, 2025 to December 31, 2025	77,851
Unit 601-B	January 1, 2025 to December 31, 2025	39,933
Unit 605	January 1, 2025 to December 31, 2025	18,779
 - c. Annual lease of an office space for its Ortigas branch effective April 16, 2022 to April 15, 2023 with a stipulated monthly rent of ₱107,701. The lease was renewed on April 16, 2023 at a monthly rate ₱118,471, valid until April 15, 2024. It was again renewed on April 16, 2024 for the same rate until April 15, 2025. The lease contract was subsequently renewed on April 16, 2025 at a monthly rate of ₱113,519, effective until April 15, 2026.

- d. Annual lease of office space for its Davao branch effective July 1, 2023 to June 30, 2024 with a stipulated monthly rent of ₱39,418. The lease contract was renewed on July 1, 2024 at a monthly rate of ₱43,459 until June 30, 2025. The lease contract was subsequently renewed on July 1, 2025 for the same rate, effective until June 30, 2026.
- e. Annual lease of office space for its Iloilo satellite office with stipulated monthly rent of ₱12,000 effective March 1, 2022 to February 28, 2023. This was renewed in March 1, 2023, March 1, 2024 and March 1, 2025 for a monthly rate of ₱13,000 until February 28, 2026.
- f. A co-working space service agreement commenced on August 1, 2023 to August 1, 2024 located at Alabang, Muntinlupa City with monthly lease rental of ₱5,000. This was renewed in August 1, 2024 for monthly rate of ₱5,000 until August 31, 2025. The lease contract was subsequently renewed on August 1, 2025 for the same rate, effective until August 31, 2026.

The Company applies the 'short-term lease' recognition exemptions for annual leases.

The rollforward analysis of right of use assets follows:

	2025	2024
Cost		
As at January 1	₱140,367,731	₱137,606,565
New leases during the year	–	4,144,917
Termination	–	(1,383,751)
As at December 31	140,367,731	140,367,731
Accumulated Depreciation		
As at January 1	65,470,120	36,894,485
Depreciation expense	29,423,039	29,959,386
Termination	–	(1,383,751)
As at December 31	94,893,159	65,470,120
	₱45,474,572	₱74,897,611

The roll-forward analysis of lease liabilities follows:

	2025	2024
As at January 1	₱85,621,767	₱108,498,635
New leases during the year	–	4,144,917
Accretion of interest	5,304,593	7,525,680
Payments	(35,365,354)	(34,547,465)
	₱55,561,006	₱85,621,767

Non-current portion of the lease liabilities is disclosed in the maturity analysis in Note 26.

The following are the amounts recognized in the statements of income:

	2025	2024
Depreciation expense of right of use assets (Note 21)	₱29,423,039	₱29,959,386
Expense relating to short-term leases (Note 21)	9,358,561	9,078,981
Interest expense on lease liability	5,304,593	7,525,680
Total	₱44,086,193	₱46,564,047

29. Contingent Liabilities

Various legal actions and claims are pending or may be assessed in the future against the Company from litigations and claims incident to the ordinary course of business. Related risks have been analyzed as to likelihood of occurrence. Although the outcome of these matters cannot always be ascertained with precision, management believes that no material liabilities are likely to result.

30. Supplementary Information Required Under Revenue Regulations No. 15-2010

In compliance with the requirements set forth by RR15-2010 hereunder are the information on taxes and license fees paid or accrued during the taxable year:

Output VAT

The Company is a VAT-registered entity with VAT output tax declarations for premiums, commissions and other miscellaneous collections as follows:

	Amount	Output VAT
Vatable sales	₱4,536,725,471	₱544,407,066
Zero-rated sales	1,248,012,739	-
Exempt Sales	561,854,550	-
	₱6,346,592,760	₱544,407,066

Zero-rated sales consist mainly of those earned from persons or entities whose exemptions are provided under special laws or international agreements to which the Philippines is a signatory.

Exempt sales pertains to Personal Accident and Medical policies subjected to percentage tax and other transactions with VAT exempt entities.

Input VAT

The amount of VAT Input taxes claimed are broken down as follows:

At January 1, 2025	₱45,093,400
Current year's domestic purchases/payments for:	
Purchase of goods	4,179,717
Payment for services	174,080,207
	<hr/>
	223,353,324
Application of input VAT against output VAT	179,445,916
At December 31, 2025	<hr/> <hr/>
	₱43,907,408

The amount of VAT payable as of December 31, 2025 consists of the following:

Output VAT	₱717,614,653
Input VAT	(223,353,324)
Tax credits/payments	(389,371,984)
VAT payable	<hr/> <hr/>
	₱104,889,345

Documentary Stamp Tax (DST)

The DST paid on the following transactions are:

<u>Transaction</u>	<u>DST</u>
Policies of insurance upon property	₱573,660,696
Accident and health	1,157,490
Compulsory third-party liability (CTPL)	2,130

Other Taxes and Licenses

Details of other taxes, local and national, including real estate taxes, license and permit fees follow:

<u>Local</u>	
License and permit fees	₱532,384
<u>National</u>	
Fees paid to the Insurance Commission	1,199,724
Licenses of agents	686,353
Fringe benefit taxes	1,109,175
Tax on sale and purchase of stocks	2,068,924
BIR annual registration	374,736
Others	52,725,144
Total	<hr/> <hr/>
	₱58,696,440

Others include amount paid to BIR amounting to ₱22.64 million basic assessments for taxable years 2022 plus interest and surcharges and

Other national taxes and licenses refer to tax clearance renewal, certification fee for closed branches for the year.

Other taxes paid are:

Fire service tax	₱21,469,104
Local government tax	16,047,830
Premium tax	8,921,529
	<hr/>
	₱46,438,463
	<hr/>

Withholding Taxes

The amount of withholding taxes paid/accrued in 2025 amounted to:

Expanded withholding taxes	₱119,277,195
Withholding taxes on compensation and benefits	44,648,628
Final withholding taxes	10,780,010
	<hr/>
	₱174,705,832
	<hr/>

Tax Contingencies

The Company is currently under preliminary tax audit with the BIR for taxable years 2021. The Company has not been involved in any tax cases under preliminary investigation, litigation and/or prosecution in courts or bodies outside the Bureau of Internal Revenue.

FPG INSURANCE CO., INC.
SUPPLEMENTARY SCHEDULE OF EXTERNAL AUDITOR
FEE-RELATED INFORMATION
YEAR 2025

	Years Ended December 31	
	2025	2024
TOTAL AUDIT FEES	¥3,192,500.00	¥1,764,000
Non-audit Service Fees:		
Other assurance services	-	-
Tax services	-	-
All other services	-	-
Total Non-audit Fees	-	-
Total Audit and Non-audit Fees	¥3,192,500.00	¥1,764,000

The increase in audit fees in 2025 is due to the half-year audit as required by the SEC in relation to the merger application.

CONSUMER ASSISTANCE MANAGEMENT SYSTEM



CONSUMER



PLATFORMS



TRUNKLINE

(02) 8859-1200
(02) 7944-1300



EMAIL

FOR COMPLAINT
consumercomplaint@fpgins.com
FOR INQUIRY/REQUEST
phcustomercare@fpgins.com



MAILING ADDRESS

CRM DEPARTMENT
6/F Zuellig Building, Makati Ave.,
corner Paseo de Roxas,
Makati City 1225, Philippines



WEBSITE

www.fpgins.com/ph



SOCIAL MEDIA



[fpginsurance.ph](https://www.facebook.com/fpginsurance.ph)



AGENT/ BROKER

CONTACT YOUR SERVICING
AGENT/ BROKER



RECEIPT AND
ACKNOWLEDGEMENT

Complaints are received through
our various service delivery channels



INTERNAL INVESTIGATION,
REQUEST, AND RESOLUTION

Our consumer assistance team conducts
the investigation and comes up with
a resolution for the complaint



COMMUNICATION OF
RESOLUTION TO CUSTOMER

We communicate to the financial consumer the resolution
within the time frames below:
SIMPLE – within 5 working days
COMPLEX – within 30 working days

FPG Insurance Co., Inc. is supervised by the Insurance Commission with offices in Manila, Cebu, and Davao.

HEAD OFFICE

- 1071 United Nations Avenue,
Ermita, Manila
- (02) 8523 8461 loc. 103/127

CEBU DISTRICT OFFICE

- 3rd Floor, Lexmark Plaza 3,
Samar Loop corner Panay Rd.,
Cebu Business Park, Cebu City

DAVAO DISTRICT OFFICE

- Doors 2 & 3 Third Floor of Yap Bldg.
Quimpo Blvd., Ecoland, Davao City
- (6382) 327-3651



FPG Insurance Co., Inc.

6/F Zuellig Building, Makati Avenue corner
Paseo de Roxas, Makati City, Philippines

 (02) 8859-1200 | (02) 7944-1300  phcustomer@fpgins.com
 www.fpgins.com/ph